

THE BROMHAM HOOT

SEPTEMBER/OCTOBER 2023



NUMBERS YOU MIGHT NEED

Devizes (01380) numbers unless otherwise shown

Parish of Rowde, Bromham and Sandy Lane			Bromham Parish Council		
Rector	Vacancy		Chairman	Peter Paget	850246
Associate Priest	Rev Heather Smith	07702 113544	Clerk	Rosalind Humphries	850874
			Email: rosalindjhumphries@gmail.com		
Church Warden	Vacancy		Wiltshire Council	All departments	0300 4560100
			The Bromham Clubhouse		
Methodist Church	Rev Craig Manley	01249 818923	Bookings	Dave Paget	859492
	Jenny Blackman	850580	Email: clubhouse@bromhamsocialcentre.co.uk		
Roman Catholic Church	Fr Paul Gonsalves	723572	Chairmen	Malcolm Turner	850204
St. Nicholas School	Office	850391		Pete Davis	850792
PTA Chair	tbc		Clubhouse Cafe	Den Fillis	850473

Contacts for Village Organisations

Bell Ringers	Linda Drummond-Harris	07905 188030	Phoenix Club	Sandra Davis	850792
Bromham Amblers	Fiona Burtenshaw	07929 995093	Royal British Legion	Neil Meadows	850360
Busy Kids Pre-school	Kelly York	859389	Short Mat Bowls	George Henderson	01249 815388
Carnival Chairman	Peter Hindle	850925	Spye Park Cricket Club	Tom Mornement	850913
Football Club	Neil Davison	07860 557125	Stitchers	Ann Hannah	850589
Footpath Group	Linda Drummond-Harris	07905 188030	Tennis Court Bookings	Caroline Jones	850260
Friends B & SL Churches	Michael Armstrong	850345	Twinning Association	Janet Giles	850327
Gardening Club	Sue Skelt	850601	W.I. President	Lesley Eacopo	850967
Little Angels	Carole Myer	850706	Bromham Ladies	Muriel Sibun	850126
Monday Club	Carol Hindle	850925	Youth Club Secretary	Claire Smart	
Organisers	Cathy Welch	850555			
Mothers' Union	Carole Myer	850706	Drama Group	Penny Lander	859002

Village Website: www.bromhamwiltshire.org

BROMHAM PARISH COUNCILLORS 2023 - 2024

Name	Address	Tel. No.
Rod AMOR	81 New Road, Bromham, Chippenham, SN15 2JB	850045
Jim BUTLER	Bromham House Farm, 40 Devizes Road, Bromham, Chippenham, SN15 2DX	850230
Jean COLLENS	17 Church Hill, Bromham, Chippenham, SN15 2JQ	850675
Adam COLLINS	81 Devizes Road, Bromham, Chippenham, SN15 2DZ	850228 / 850186
Phil COLLINS	81 Devizes Road, Bromham, Chippenham, SN15 2DZ	850228 / 07971 120601
Peter HINDLE	85 Netherstreet, Bromham, Chippenham, SN15 2DW	850925 / 07711 423549
Keith MAHONEY	43 The Pound, Bromham, Chippenham, SN15 2HF	850441
Sam PAGET	28 Greystones, Bromham, Chippenham, SN15 2JT	850246
Peter PAGET (CHAIRMAN)	28 Greystones, Bromham, Chippenham, SN15 2JT	850246
Jonathon SEED	Wayside, 12 Chittoe Heath, Bromham, Chippenham, SN15 2EH	07770 774463
Adam SLUSARCZYK	40 New Road, Bromham, Chippenham, SN15 2JB	07834 451728
Cary THOMPSON	44 Yard Lane, Bromham, Chippenham, SN15 2DT	850388 / 07770 846442
Kate WHITE	30 Brick Hill, Bromham, Chippenham, SN15 2JL	850395 / 07709 181280

The Bromham Hoot is created and produced by:

Editor - Peter Hindle, Content - Heather Smith, Advertising - Tracey Hutchison,

Distribution - Rachel Prichard

Please email us at: bromham.hoot@outlook.com

If you don't get your copy of The Hoot at the usual time or know someone who hasn't, do please let us know by emailing bromham.hoot@outlook.com and we'll try to sort it out.

Printed by: Springfords and Rose Ltd, 35 Eastleigh Road, Devizes SN10 3EQ



WELCOME TO THE BROMHAM HOOT

Welcome to the September - October 2023 edition of The Bromham Hoot.

We would like to apologise for the late delivery of the July issue of The Hoot. We knew it would be printed later than usual as we wanted to make sure we included as many photographs from the Carnival as possible, but there was a problem at the printers with the machine that folds and staples the magazine which meant that many of you didn't get your copy of The Hoot until the middle of the month.

The cover photo this issue is a little different from the usual views of the village. It was submitted by Claire Smart as her entry into the Tote on Tour competition - see page 14 for more details. We asked Claire to write an article about her adventure which you can find in this magazine, together with more photos of her amazing trip. We would love to hear from other villagers who have made their own trips of a lifetime!

The Hoot team would like to thank the Netherstreet Plant Sale for their incredibly generous donation of £400 towards keeping The Hoot going. Thanks to all the donations from individuals and organisations we can now cover the difference between advertising revenue and the cost of paper and printing for another year and hopefully have a buffer against the inevitable cost increases.

The next issue of The Hoot will be for November / December 2023, and will be distributed early in November.

The deadline for content and advertising will be Friday October 20th.

Wiltshire Bobby Van Trust Home Security and Stay Safe Online Schemes

The Wiltshire Bobby Van Trust (WBVT) works in partnership with Wiltshire Police to provide free Home Security and Stay Safe Online services for elderly and vulnerable people throughout Wiltshire.

All Wiltshire residents who are over 60, and those aged 18+ with a registered disability, are eligible for these schemes which are aimed at those who have become or are at risk of becoming a victim of house crime, cybercrime, or domestic abuse.

The charity funds the operation of three Bobby Vans that provide mobile workshops for Bobby Operators.

Bobby Operators are skilled carpenter/lock fitters. The operators are also trained in crime reduction and Fire Risk Assessment and provide reassurance to clients.

Bobby Vans are directed to their tasks by coordinators working from an operations room, who receive referrals, decide on work priorities and despatch the vans using sophisticated communications equipment. On arrival the operators conduct a security audit with the permission of the client, fit the necessary security equipment to ensure the home is safe; in addition, they carry out a Fire Risk Assessment and fit smoke alarms and carbon monoxide detectors when this is appropriate. Finally, all aspects of home, personal and fire safety are discussed, and practical measures provided. The service and equipment are provided **free** of charge.



In 2017, WBVT launched a bespoke Online Safety Initiative – Stay Safe Online.

Trained Stay Safe Online Volunteers provide improved digital security awareness, scam prevention advice, support and reassurance; basic practical skills for checking and understanding digital privacy settings; and signpost people to future sources of advice and resources. The free service offers one-to-one home visits and community group talks and is managed by a dedicated Stay Safe Online Coordinator.

If you are eligible and don't feel that you have adequate home security or would like advice about staying safe whilst using your electronic devices/computer, please contact us to arrange a visit.

Home Security **Call: 01225 256867 or Email: bobbyvan@wiltshire.police.uk**

Stay Safe Online **Call: 01225 256867 or Email: bobbyvanonlinesafety@wiltshire.police.uk**

FROM THE METHODIST CHAPEL

Services in September and October (all at 10.30 am):

Sunday 3 Sept	Local Arrangement	Sunday 1 Oct.	Mrs Patti Harrison
Sunday 10 Sept	Holy Communion - Rev Craig Manley	Sunday 8 Oct.	Mrs Joanne Williams
Sunday 17 Sept	Mr Derek Gard	Sunday 15 Oct.	Deaconess Josie Flute
Sunday 24 Sept	Harvest Festival - Mrs Elizabeth Manley	Sunday 22 Oct.	Mrs Elizabeth Manley
		Sunday 29 Oct.	Sector Service - Rev Craig Manley

We would like to thank everyone who supported us at the Carnival and our Afternoon Tea event. Special thanks to Ivor and Anne Powney for their help transporting tables etc from the Chapel to the Clubhouse. Your help is greatly appreciated. Thanks to everyone that donated raffle prizes and cakes, and to those who helped with setting up the stalls and washing up on the day - we could not manage to do what we do without you. We raised £150 at the Carnival and £400 at the Afternoon Tea.

Another special thanks to Les Fear and his niece Jeanette for the splendid refurbishment to the Chapel porch and notice board.

Forthcoming Events

Coffee and Chat - From 10.00 am – 12 noon

Saturday 2 September

Saturday 7 October

Saturday 4 November

Everyone is welcome to join us for our Harvest Festival celebrations on Sunday 24 September when we will be serving tea, coffee and homemade cakes.

We will be holding our annual Bazaar in the Clubhouse on Saturday 18 November from 2 30pm to 4 00pm with all the usual stalls, Bottle Stall, Cakes, Gifts, Raffles and serving Tea, Coffee and Cakes. Any donations of Raffle prizes and cakes would be greatly appreciated. Please contact Jenny Blackman on 850580 for more details.

Jenny Blackman - Bromham Methodist Chapel

VILLAGE ORGANISATIONS & ACTIVITIES

Bromham W I

The speaker for our July meeting was Andrew Campbell. His talk, entitled "The 50 days after Waterloo", highlighted the court of Napoleon and the women that were close to him after the battle and during his life up until his exile. Andrew was a very enthusiastic speaker, with a considerable knowledge of French history. The competition for the evening was "Something Military". The winning article was a ship's bosun's whistle brought by Sheila Sims.

We left the Clubhouse for our meeting in August. Thirteen of our members together with five of their husbands went to Jim Butler's farm to see the Bio Digester. We had visited the farm 6 years ago before the digester was fully operational. It was really interesting to be shown round the site by Jim and learn about the operation of the digester and how it works today. For the whole of our walk around the site we were accompanied by one of Jim's lovely little dogs. She was obviously quite at home on the site and not at all perturbed by the noise of loud machinery. We finished our visit in the farm kitchen where Jim and his wife Jo provided us with a selection of cold and hot drinks. Some of the WI members had brought cake, as it wouldn't be a WI meeting without cake!! It was a really lovely evening, and we thank Jim and Jo for their hospitality.

The next meeting of Bromham W I is on Wednesday 13th September when Kerri Johnson will be giving a talk on colour analysis. Meetings start at 7.30pm in the Clubhouse, and visitors are always welcome.

To learn more about Bromham W I please contact Lesley Eacopo (850967). New members are always welcome.

Sheila Sims

Bromham Phoenix Club

The weather was difficult to predict for our visit to Weymouth on the 11th July, so we were prepared for every eventuality with umbrellas and anoraks. We were lucky because it didn't rain after all, but there was quite a stiff breeze all day though we did have sun as well.

To get there we travelled a lovely country route passing Compton Abbas airfield and over the hills which afforded some spectacular views. On arrival at Weymouth most chose of us to have a coffee at an attractive beach front café and then to explore the town or walk along the promenade. There is a small train which goes along the front, on to the harbour and across the bridge to the old town with its narrow terraced houses, then down to the Marina and finally back through the centre of the town. Some of us chose to have a ride.

Lots of good places for lunch especially fish and chips, and when you're at the sea-side then an ice-cream is a must. Back at the coach for 4.00pm. for our journey safely home to Bromham ... where it was pouring with rain.

Jean Turner

Bromham Footpath Group

On the last Thursday of June, we met in Holt village hall car park for our out of village walk led by Robin Mortimer. He took us across fields to the road linking Holt to Great Chalfield. To get over the tall fence there was a most unusual arrangement which Robin has always known as Jacob's Ladder. Once over the fence we took a detour to see Great Chalfield Manor before retracing our steps and taking a different route back to Holt. Lunch was at the Bell on the Common at Broughton Gifford.

For our July walk we ventured rather further afield to Fonthill Bishop. Our meeting place was a lay-by beside the lake. To get there you pass beneath a most impressive arch marking the entrance to the Fonthill Estate. Our walk took us up through woodland on the far side of the lake until we were high enough to get a good view of Fonthill House. Previous owners of the estate had built and demolished a succession of grand houses on the other side of the lake, one of which was destroyed by fire, but only two have occupied the current site, the latest one built as recently as 1972.

Even though we had done this walk twice before and we had a map, we managed to miss a turning and found ourselves heading for the main road until a lady in a passing car pointed out our mistake. Unfortunately, turning back meant toiling up a long hill to get back on track along the Ridge. The views from the Ridge were spectacular but we had little time to stop and admire the view as we were running very late. A quick phone call to the Wyndham Arms in Dinton gave us an extra thirty minutes grace and we finally joined our non-walking friends who had arrived an hour previously for a superb lunch.

We meet every Thursday at 9.00am at the Social Centre car park for a two hour walk. For details of our next out of village walk, please contact me on **07905 188030**.

Linda Drummond-Harris

Bromham Amblers Walking Group

We meet every Thursday at 10.00 am in the village car park by The Greyhound. The friendly group walk gently - with no stiles - locally. About once a month we share lifts to amble somewhere else. We arrange to have coffee somewhere every week at 11 o'clock. We generally have between 8-20 people weekly walking and it's a lovely supportive and fun group.

Fiona Burtenshaw, 07929 995093, email: fiona@aps.ltd



The group at Great Chalfield Manor



The entrance to the to Fonthill Estate

Monday Club

We were very sorry to say goodbye to Caroline at the end of July. We presented her with a cheque, hoping that she'll buy something to remind her of her Monday Club connection and all shared a delicious cake at coffee time. We've heard that Caroline is enjoying being in beautiful Shropshire and especially being able to walk to the shops from her home in Ludlow! She's completed her training and is beginning to work as a Carer in the area.

On 9th September, between 10.30 and 12.30, we are holding an Autumn Coffee Morning in the Clubhouse to raise funds for the club. Please come along and support us, there will be delicious cakes to eat with your coffee or tea and also a Bottle Bingo – all sorts of goodies to win!!

We would like to have more members at Monday Club so why not come along and see what were all about. Maybe just come for coffee at 10.00 and enjoy the morning with us. You may have seen a couple of Serena's amazing desserts on Spotted in Bromham – they taste just as good as they look!

The Club would like to thank the organisers of the Netherstreet Plant Sale for their very generous donation to our funds. We plan to use this for something special.



Bromham Youth Group

Bromham Youth Club is currently on it's summer break but we are looking forward to our Summer Trip on the 25th of August where members are off to Swindon to take part in LaserQuest, crazy golf and bowling. This is thanks to Calne Lions who have subsidised this trip for the club. Before breaking up for the summer members enjoyed rounders and a basketball match.

The club has recently applied for a Youth Grant from Devizes Area Board to enable us to run for another year.

The club returns in early September and has some spaces for new members. We can take up to 20 young people. Members need to be 11 years old and at secondary school. If you would like to join please email us at bromhamyouthy@gmail.com for more information. We currently have young people attending from Abbeyfield, Kingsbury Green, Melksham Oak, Lavington, Dauntsey and Devizes school.

Darren Barber

The Crofton Stokers - 11th August



Massive thanks to everyone who supported the recent charity music event in the church with "The Crofton Stokers".

It was a very enjoyable evening, with great music and a delicious buffet supper. The sum of £571 will be going to Julia's House, and £150 raised from the raffle will be going to church funds.

The next event will be a Curry & Quiz night in aid of Dorothy House Hospice, Friday September 15th in The Clubhouse, 6.00 for 6.30pm. £15 per person. Limited to 40 places, so get your name down!

Thanks again to you all: **Cath, Den, Denise and Tracy (Collins)**

Bromham Parish Council Reports July/August 2023

Finance meeting July 17th

- It was reported that all cemetery repairs to memorials which was highlighted in the Health and Safety Inspection by James Long, have now been completed at a cost of £1700. All work is guaranteed for five years.
- The Clerk informed the Committee that she would retire as from April 30th. Councillor Elections are also due in May so the Clerk felt that was an ideal time to retire also giving time to complete the end of year accounts to hand over to a new Clerk, also recommended that a new Clerk should be employed from January to get familiar with the Clerk's role. Vacancy to be advertised: Wiltshire Association of Local Councils; Wiltshire Council; HOOT; Notice Boards; Spotted in Bromham; Village Website. (Closing date for applications 15th September)

SANTANDER GENERAL ACCOUNT	
Allotment	£9409.58
General	£12486.61
Burial	£4662.57
Social Centre Rebuild	£18424.36
VAT	£4248.31
TOTAL	£40734.71

SANTANDER INVESTMENT ACCOUNTS	
Clerk's Gratuity	£6186.07
Play Area	£7889.61
Village Celebration Fund	£1621.07
BMX/Skateboard	£2003.15
Raby Fund	£100.00
Solar Community Fund	£26.15
CIL Fund	£59.48
PC Insurance Claim	£12172.00
Community Fund (The Owl)	£42218.30
Social Centre Rebuild Fund	£751872.34
Interest	£2700.82
TOTAL	£826848.99

LLOYDS RABY	£828.01
P/OFFICE J G DAVIS	£501.06
TOTAL	£1329.07

TOTAL ASSETS at 30.06.2023: £867,823.70

Parish Council Meeting 17th July 2023

Councillor Co-option: Two applicants were invited to an informal interview. Pam O'Neil and Cary Thompson. As a result, Cary Thompson was the successful candidate as a replacement for Mr B Amor.

The PC would like to thank Mr Brian Amor for his years serving on the Parish Council as both a Councillor and the Social Centre Committee representative.

Laura Mayes Update:

- WC new Local Plan 2028 setting out a Development Plan including more policy controls. To include 40% low-cost housing over the next 10 years, all zero carbon.
- The £2 bus concessions continuing 9.30am-2pm
- Travellers: Judgement still pending. Site abandoned, caravans becoming derelict.
- Wyatt's Lake drainage contractor agreed, quote for wrong size pipe received so on going. Now flooding after 6mm of water. RH to request jetting again
- Chittoe Heath: WC working with PCSO, Landowners and residents. Signs?
- 30 MPH Repeaters – reported erected in January – therefore must be put up in wrong location
- Local Government School Governors discussed. Parish Council's involvement with St Nicholas?

Minute Update:

- **A342 50 mph Speed Limit** – 40mph Sandy Lane and 50 mph speed scheme to cost £10,000. Calne without agreed to contribute £500. LHFIFG 12 months to implement.
- **Church Hill Speed Limit.** – LHFIFG meeting. Community Speed watch back up required /volunteers? Still causing concern.
- **Pound Footpath Light out:** Repaired. Trees not cut back – Land owner not WC's responsibility
- **Wednesday Club request** – Memorial Anchor Health and Safety concerns?
- **Dog Bins and Millennium Field** Pavilion replacement. Bin ordered. WC Quote: To supply and install 50 ltr bin £565.56 + VAT To empty and dispose of once/week £955.82 25ltr +50 ltr bin £619.14 + VAT for both bins RH to Contact grist re bin at the Pavilion – price to empty
- **Parking at Highfield/The Crescent:** No further correspondence received. (since this meeting concerns have again been brought to the attention of the PC and Police)
- **Play Area Light 29A out** – reported –LM to report again
- **Clerk's laptop** – ongoing AS/RH. On hold until new Clerk.

- **Village Trees Inspection – JB update.** Booked £350 budget.
- **Chittoe Heath Activity update:** Contact from PC 0355 Jenny Groome Devizes Neighbourhood Team. Signs/Car numbers? As LM report.
- **Pound Metro Count Requested:** Requested
- **Family Event 22.23 July:** Insurance/WC/ H & S all received.
- **First Aid Course for 12** – advert in the HOOT – (Ian Tuckett)
- **7.5 Tonne sign** and chevron signs require attention Roughmoor. Reported.
- **Pavilion Clock.** KM reported that the battery clocks are not suitable and are affected by full sun.

Parish Neighbourhood Plan update - J Butler Report: Consultant to complete NH Plan? A request for funds of £825.00+VAT for a new consultant to carry out a review of the work completed and what is required to complete/update.(825.00+VAT) NHP Update request WC/update. Discussion with LM regarding WC funding for completion £8-10,000. NHP meeting to be agreed for August.

Social Centre Rebuild:

- **Ragwort on old site** - S Hammond to be asked to trim.
- **Consultation Meeting on Monday 19th June:** The draft minute did not make the HOOT deadline due to discrepancies concerns from JS. Minutes amended and circulated. Agreed and signed.
- **Grants Update;** It was confirmed that the £250,000 grant application was not successful, although the window for applications will open again. How to go forward? Why did it fail? A lottery grant application is in progress. Queried the possibility of Wiltshire Council funding?
- **Building Survey Costs** (£14,917.44) No decision made pending JS enquiries to WC regarding necessity of all surveys on the original site. Architects fee request Stage 1 Stage 2 (£10,180.68) Payment agreed.
- **CIO Update:** The CIO has been approved as a registered Charity.
- Is the CIO now required? Can we go back to the old Charity? CIO status required for Lottery grant.
- **Parish Council / CIO Land Lease:** Discussion regarding what is required in the Lease: Land, building, car park? It was agreed not to include the car park. A plan is required with dimensions.
- **Social Centre Management Extraordinary Meeting July 28th.** Depending on the outcome the PC may need to apply to the Charity Commission for a Scheme, which will need to comply with the 1972 Trust.
- Further discussions took place including comments from parishioners present regarding limited funding due to the unsuccessful grant. It was suggested building the shell with the interior on a self-build basis using local builders. It was remarked that parishioners have lost faith as nothing is happening. Query-Why are we not using locals/architects etc. a local architect did produce a draft plan.
- There was concern regarding liability if using unregistered builders.
- It was proposed that A Turner is approached regarding a self-build scheme. JB to take back to the Rebuild Committee. Other queries: What price for the shell to be built? What is the price for the build of the proposed plan? It was suggested to visit Melksham Library constructed of a Steel frame.
- **Planning progress:** Surveys to be completed first.
- **Contractor Tender process:** 6 contractors have been recommended/approved by WC. Brief will be sent out for tender. Will local builders be included? A Steel frame construction again discussed as an option with the same layout.

Allotment: The new Crown Lease is still ongoing. Best Kept Allotment to be judged August. Small Plots still available. Please contact the Clerk if interested.

Defibrillators: Many thanks to the Wednesday Club who have sponsored one of the five battery replacements costing £285+VAT. Further sponsors welcome.

Village Notice Board: A new notice board will be erected in the bus shelter on the Village Carpark.

New Orchard: 6 dead trees to be replaced in the Autumn.

Web master: Many thanks to Joy Todd who oversees the village website: bromhamwiltshire.org - a honorarium payment was agreed. (All full minutes are available on the village website)

Best kept village competition 2nd round: Congratulations - Bromham came 2nd in the Large Village category for Wiltshire. (1st in the first North Wiltshire round)

PLANNING APPLICATIONS:

- | | |
|---------------|--|
| PL/2023/04487 | 1 Durllett Road. |
| PL/2023/04934 | Lacock. |
| PL/2023/04516 | 33 Durllett Rd. Moors Wood Farm |
| PL/2023/04713 | 128 Devizes Rd |
| PL/2023/04781 | Land at Chittoe Heath. |
| PL/2023/04880 | 29 The Pound. Asters Group: Object – concerns regarding parking issues near the junction where parking is already a problem – spaces for 2 cars but visitors etc. will park on the road. Over development of plot. |

APPROVED:

- | | |
|---------------|---------------|
| PL/2023/03496 | 9 Hunts Mead. |
| PL/2023/05406 | Chittoe Mill. |

CLERK'S RESIGNATION: JULY 28th

Due to further upset from a Councillor the Clerk has now given 3 months' notice as from August 1st, 2023

Additional Parish Council Meeting - August 14th

Normally there are no meetings in August, but following the Social Centre Management Meeting on the 19th July and advice received from Wansbroughs Solicitors on 1st August, a meeting was called for August 14th. The following is a brief account of matters discussed from the agenda for the meeting on August 14th.

The meeting was attended by 9 Parishioners and 12 Councillors. The new Co-opted Councillor Cary Thompson signed the Declaration of Office before the meeting commenced and was welcomed by the Chairman.

Parishioners' 10mins:

- Mr P Davis Chairman of the Social Centre Management Committee requested the Rebuild Committed to stand down and felt that it should have been the BSC Management Committee to appoint a Rebuild Committee as the Charity/1972 Trust gives the power of management to the Committee therefore allowing the Committee to manage the rebuild. This was challenged by the Chairman of the Rebuild Committee; the SC Committee was given the chance to serve on the Rebuild Committee and the Rebuild Committee has been through all the processes and consultation required to date with approval of the PC and Parishioners.
- The new CIO was questioned – a requirement to apply for grants applications. It does have the same purpose of the existing Charity with more legal flexibility. The New CIO is registered and now has its own bank account.
- The SC Committee/Trustees appointments were also queried in regards to the 1972 Trust requirements.
- Although there were other parishioners present who wished to speak, the Parishioners' allocated 10 minutes had been taken up. The Chairman refused to allow any further parishioners' comments.

The Insurance Claim against the Contractor and Trustees Liability was again discussed and the Clerk has been instructed to write to the SC Committee to clarify procedures and insurance cover at the time of the fire etc.

It was suggested that the PC, the CIO Trustees and the SC Management Committee met with Wansbroughs for further advice. Following further discussions to move things forward it was proposed that the PC to contact Wilsons Solicitors to discuss a Charity Commissioners Scheme regarding the transfer of assets and to dissolve the original SC Charity. Funding of further legal advice was queried by the Clerk £7860+ VAT charged to date for legal advice. It was proposed and agreed that funds from the Insurance claim could be used.

Payments of £12,256.95 were agreed. The PC also agreed to fund WC notices for Chittoe Heath.

3 Planning applications received no objections.

Best Kept Allotment: This year's winner was Dawn Parr who manages 3 plots, although it was reported that normally there is not a second place, this year it was a very close decision with S Ottaway coming 2nd.

THE SEPTEMBER MEETING OF THE PC WILL BE ONE WEEK LATER ON SEPTEMBER 18TH

All Parish Council and Social Centre Rebuild Committee minutes are available on the Village website when approved.

Rosalind Humphries, Parish Clerk - Tel: 850874 - Email: rosalindjhumphries@gmail.com

VACANCY

Council: Bromham Parish Council

County: Wiltshire

Parish Clerk & Responsible Finance Officer

Hours: Part-time (15 hours per week)

Salary: Within grade LC2 (We envisage a starting salary in Spinal Column Points 18 – 23: £27,344-£30,151 (pro-rata), though we are prepared to discuss a salary commensurate with experience and/or qualifications)

- Are you enthusiastic, solutions focussed and looking for an interesting, challenging and satisfying role?
- Would you enjoy working closely with councillors, local groups and agencies to promote the interests and well-being of our communities and helping people?
- Do you have excellent administration, inter-personal, communication, numeracy and IT skills?
- Can you work independently without close supervision?

If your answer is yes, then Bromham Parish Council would love to talk to you.

The Parish Council is seeking to appoint a Clerk/Financial Officer ideally offering a sound background in local authority organisation & administration with good educational history and/or qualifications.

The position offers nationally agreed terms and conditions of employment with training and opportunities for continued professional development.

Working hours are flexible but will involve a limited need for evening meetings

If you are interested in applying, please request an application pack from rosalindjhumphries@gmail.com:

Closing date for applications: 15TH SEPTEMBER 2023

Interview date: To be confirmed

BROMHAM & ROWDE CHURCHES

The end of summer always makes me feel sad, as we head into darker nights and colder weather. The easy days of July and August are over – even if it rained, at least it's warmer! Endings are difficult – especially when the time that's ending has been enjoyable. We face the loss of what was good. But with endings come new beginnings, and autumn brings new ventures, with new school years and perhaps a new focus at work after summer holidays. God is a champion of new beginnings. There is always an opportunity to begin again. No matter how badly (or well) things have gone in the past, God encourages us to learn from it, put it behind us, and to embrace new challenges and find new joys.



Revd Heather Smith

Church Services in September and October in Bromham, Sandy Lane and Rowde

Any changes to service times will be put on our Facebook page – Churches of Rowde and Bromham.

	8.00 am Eucharist (Book of Common Prayer)	10.00 am Eucharist
Sunday 3rd September	Rowde	Bromham
Sunday 10th September	Sandy Lane	Rowde
Sunday 17th September	No Service	Bromham
Sunday 24th September	Sandy Lane	Harvest Festival - Rowde
Sunday 1st October	Rowde	Bromham
Sunday 8th October	Sandy Lane	Rowde
Sunday 15th October	No Service	Bromham
Sunday 22nd October	Sandy Lane	Rowde
Sunday 29th October	No Service	Rowde

Contacts during the interregnum:

Revd Heather Smith [07702 113544](tel:07702113544) / revheathersmith@gmail.com

John Drew [01380 850908](tel:01380850908)

Sarah Bowler, Administrator sarahbromhamandrowde@gmail.com

Web page : www.achurchnearyou.com/church/9620/

Notes from the Belfry

Finally, the work on the bells and ringing chamber is finished. We have a new ceiling which has been painted white, making everything look clean and fresh and the general consensus is that the bells are a lot easier to ring.

Several people have commented that the bells seem louder outside than before. This could be because all the old carpet and other insulating material that was under the bells has been removed so there is nothing to absorb the sound. But in the ringing chamber it is a lot quieter than it was thanks to the new sound proofing between us and the bells.

There is an expression among bell ringers that nobody learns to ring in their own tower. What this really means is the more you visit other towers the more experience you gain and therefore the better chance you have of making good progress. So when the tower captain of Holt asked if he could bring some of his band over to ring with us on a practice night I was only too pleased to welcome them. We decided on Tuesday 15th August. We normally have between six and ten at our practices. That Tuesday we counted nineteen including nine-year-old Daniel who astonished us all with his skill at handling our bells. Trying to ensure that everyone gets something out of the practice is a challenge but all the Holt ringers went away happy and we hope to see at least some of them again.

Linda Drummond-Harris

Letter from the Parochial Church Council

Dear Friends, we sincerely hope that you are well and no doubt wondering if we'll get any summer weather before this part of the Earth tilts away from the sun again. Those who were hoping for rain back in the heat and dryness of June certainly got their prayers answered didn't they? As an old country sage said, "things even out over time" and at least the reservoirs and aquifers will be pleased as were the Australian cricketers at Old Trafford in the fourth Ashes Test Match!

Have you noticed in our gardens a sudden explosion of butterflies and especially an increase in Red Admirals? Scientists believe that these beautiful creatures are now overwintering in the U.K. owing to our warmer winters which negates the need for them to return to their North Africa wintering grounds. The ones that we see are several "greats" grandchildren of the ones that set off from North Africa. Pretty amazing don't you think?

So, what have we been up to? The village calendar has been reinstated and is positioned just inside the entrance to Church. PLEASE make a note of the date of every event that is due to take place anywhere in the village, by individuals or organisations. By having the calendar back, we can avoid any clash of dates that might otherwise occur.

Also reinstated is the offer of home Holy Communion to anyone who is housebound or unable to attend Church Services. If you or anyone that you know might like to participate, please get in touch with our associate priest, Rev. Heather Smith, telephone 07702 113544.

Unfortunately, the post of Rector will not now be filled as was planned. We must re-advertise the post which means that it will be early next year before, hopefully, the position will be filled. This is a great disappointment especially now that Caroline Culley has moved to Shropshire. Caroline worked diligently and conscientiously for many years in her unique, quiet manner. She was especially appreciated at the many funerals and other services that she led, together with her work for the Monday Club and the Community Hub. We wish her and her family all good fortune in their new home.

On the evening of July 20th., we hosted a very enjoyable and successful concert featuring talented brother and sister, Gregory and Ellen Steward, who sang solos and duets from a variety of classical and popular music. We will certainly invite them back for a repeat next year, given the rousing ovation given to them at the end of the concert.

It was good to see several friends enjoy cream teas that were served in the Church on the 5th of August. These treats were also served to and enjoyed by those attending a meeting in the Clubhouse on the same afternoon. On the evening of August 11th., a packed Church enjoyed a charity evening in aid of Julia's House, listening to the music of The Crofton Stokers. Well done to those of you who organised this event.

We would like to take this opportunity to sincerely thank all of you who continue to support all that we are trying to do to ensure that your Church is always there to help our community when and where it is needed. Plus of course, for your Baptisms, Weddings, Funerals and the many social events, where we can strengthen and enhance our community bonds.

Now, a plea to all those who are making jams, chutneys etc. If you have any surplus preserves that you are making, you might like to donate them for our stall in The Devizes Shambles market on Saturday October the 14th. Do come along anyway and pick up a bargain, as all the preserves are home-made and without any of the additional ingredients that you find in mass produced jams. If you can help, please get in touch with any of us. Thank you.

Our next event is a very popular Beetle Drive upstairs in the Greyhound on the evening of November the 1st. Please book early as there is limited space. We will again be hosting the annual and very popular Bromham Bash in the evening of November 25th.; this is always an evening of laughs!

Finally, the Christmas Tree Festival in the Church will run from Saturday 16th. until Saturday 23rd. of December.

In our last letter, the story was told of the priest and his lawnmower, well this priest had a brother named Ollie, who answered an advert for a Christian horse. "It's easy to ride", the owner told Ollie, just say "Praise the Lord" to make him go and "Amen" to make him stop. Ollie mounted the horse and said, "Praise the Lord" and sure enough, the horse started to walk. "Praise the Lord", he said again, and the horse began to trot. "Praise the Lord, "Praise the Lord", Ollie yelled, and the horse broke into a gallop. Ollie was enjoying the ride so much that he almost didn't see the cliff edge they were about to go over. Ollie shouted, "Amen" at the top of his voice and the horse stopped right at the edge of the cliff. Mightily relieved, Ollie said, "Phew, Praise the Lord".

Best Wishes from Cynthia Wilkinson, John Drew, Anne Smith, Linda Drummond Harris, Heather Armstrong, Dennis Powney, Phil Bayley, Ernest Escott.

LAURA MAYES - Wiltshire Councillor for Bromham, Rowde & Roundway

I hope you had a good summer and managed to avoid the rain! If you're planning a trip to one of our Household Recycling Centres then please take note of this message from Wiltshire Council:

"Sort it before you bring it" – help ensure we're recycling as much as possible at our Household Recycling Centres.



Over a third of items put in the rubbish skips at Wiltshire's Household Recycling Centres could be recycled.

Let's Sort It before you bring it!

Some of the items you can recycle at our sites include:

- Textiles and clothes
- Metals, cans and aerosols
- Plastics
- Electrical items
- Paper
- Wood
- Cardboard
- Soil and rubble

Wiltshire Council

First, we asked you to help sort your kerbside collection waste to great success, and now we're asking for you to step-up once again so that we can recycle even more at our household recycling centres (HRC). Our data shows that more than a third of the items put in the general rubbish skips at our HRCs could have been recycled. With that in mind, as part of our 'Recycling: Let's Sort It' campaign we encourage you to sort your waste out before you visit your local HRC, ensuring that all items are separated correctly.

So, whether you have been clearing out the garage, moving house, or just having a tidy up – please take the time and care to sort out your recycling before you visit the HRC.

As ever, please contact me if you need help with any Council issue including Highways, Anti-Social Behaviour, Planning, and Housing.

Laura Mayes

Mobile 07855819343

Email: laura.mayes@wiltshire.gov.uk



YOU ARE INVITED TO A COFFEE MORNING ON
SATURDAY 30TH SEPTEMBER

AT THE CLUBHOUSE

FROM 10am UNTIL 12pm

TO HELP RAISE FUNDS FOR MACMILLAN CANCER SUPPORT



**WE ARE
MACMILLAN.
CANCER SUPPORT**

PLEASE JOIN US TO ENJOY COFFEE, CAKE AND A CHAT AMONGST FRIENDS

Lesley Eacopo and Den Fillis with their teams

Autumn Sale

**BROMHAM TEA TOWEL
NEW FALLEN PRICE**

NOW ONLY £7.50 EACH

**ALL MONEY RAISED GOES TOWARDS THE REBUILD FUND
BUY NOW IN TIME FOR CHRISTMAS INTERNATIONAL POST**

For sale in the Clubhouse Cafe
every Thursday & Friday 10.30 am - 1.30 pm

**25%
OFF**



How to Order...

To place an order contact Rachel Prichard via email rachel.prichard@btinternet.com or text **07759 009507**

State your name, number of tea towels, address and contact details. Payment will be due on delivery of order via cash or cheque.

BROMHAM BASH 2023

**Saturday 25th November
at 7pm**

St Nicholas Church Bromham

**Bromham
Bash**

An evening of
Fun,
Food
&
Entertainment

£5

pay at the
door

Raffle

Tea and squash provided but please
bring your own wine

We are having another Bromham Bash on Saturday November 25th starting at 7pm in the church.

This is a very popular yearly event, and is an evening of fun, food and entertainment when very talented people in our village put on an evening of impromptu entertainment. If you can sing, play an instrument, recite a poem or tell a funny story and would like to take part please let me know by the beginning of November so that you can be included in the programme.

The cost of the evening is £5 and all money raised goes towards the up keep of our lovely village church. So mark November 25th in your diaries and we hope to see you there.

Sheila Sims (859088)

**Wed Nov 1st 6.30 for 7pm
upstairs in The Greyhound**

Beetle Drive

**Tickets
£5**

to book: Contact Ernest on 850405
or Linda on 07905 188030

★ Numbers limited so book
early to avoid disappointment

Tote on Tour competition

The Tote on Tour competition has started to capture the imagination of globe trotting villagers who have posted photos from as far afield as Tuscany, Slovenia and even Florida.

The bar has been set very high by Claire Smart, who took her I ❤️ Bromham Tote to the summit of Mount Kenya. In distance from Bromham, she is still only in second place at 4235 miles. The current leaders are Rachel and Paul Mortimer. At 4275 miles, Disney's Magic Kingdom Florida is just 40 miles further from Bromham than Mount Kenya!

There's still plenty of time to go further!

Prizes for the furthest distance and for the most imaginative photo ...

- * Buy an I ❤️ Bromham Tote Bag for just £5 from any of the Carnival Committee or The Patchwork Rabbit. There are still around 40 totes left.
- * Take it on a trip, or on holiday
- * Take a photo to show where you have been with it
- * Post the photo on the Bromham Carnival Facebook page

Deadline is Christmas 2023



Disneyworld Florida - Rachel & Paul Mortimer



Slovenia - Claire Smart



Umbria for the Sagrantino ballooning festival - Caroline Palmer

From Bromham to the summit of Mount Kenya!

I have lived in Bromham pretty much all my life. I currently work as an assistant exams officer at a local Secondary School and I am also a Teaching Assistant in Thorn class at St Nicholas Primary School. I also help to run Bromham Youth club. This year, I decided to do something pretty special, I travelled to Kenya and climbed Mount Kenya, the second highest peak in Africa, as part of a guided group.

My love of mountains started about four years ago, when I was invited to climb Snowdon as part of a school charity challenge. Up until this point I had always been a keen walker but had never done anything like that before so it was a stretch, especially as the weather was terrible - winds and sideways rain, it should've been enough to put me off. I then signed up to become involved in the school Duke of Edinburgh award scheme as part of their Outdoor Education team, helping students achieve their Bronze, Silver and Gold awards and taking part in their expeditions. I am very lucky that the School has encouraged me to take on various training courses to improve my navigation, leadership and camping skills which have taken me to Snowdonia, the Brecon Beacons, Exmoor and Dartmoor to name a few. I have also been fortunate enough to be involved in school expeditions to Morocco and last October, from Kathmandu to Gosainkunda Lakes in Nepal where we trekked with students, staying in local tea houses and climbed to 4500m above sea level where we were rewarded with stunning views of snow capped mountains.

This year I set myself a challenge. My 3 children are now older and don't really want to be out walking with me so I decided to be brave and take on a 6 day solo trek to Kenya. This meant I had to find my own way to Nairobi airport and from there into Nairobi itself ready to be picked up to start the trek the following day. At this point, I knew there was one other person trekking with me, but I didn't know anything about them. Fortunately she turned out to be a very lovely Canadian lady called Helen and luckily we had lots in common. Together with our local guide, John, we started out from Chogoria Gate in Mount Kenya National Park where we made our first camp. We managed to avoid any visits from the local wildlife in the neighbouring wildlife conservancy (lions, buffalo, hyena, elephants) and were told if we needed to get out of our tents during the night to shine our head torches up and down and as long as there were no eyes we would be ok!



We wild camped over five nights, and with the help of John, and our team of very helpful porters, who carried the majority of our kit and provided us with delicious food (and hot water bottles for the cold nights!), we made off for the summit of Mount Kenya via a camp at Lake Ellis at 3500m above sea level, following hyena and buffalo tracks up to the Gorges Valley with another camp at 4300m above sea level before our summit night on Wednesday, the 2nd of August.



We set off at 3 am in the dark with our head torches for the summit of Mount Kenya (Point Lenana) to arrive at sunrise before the clouds came in. By this point, the altitude was starting to take effect, but we persevered over the extreme terrain and reached the summit at 6:15 am in time for the sunrise. We could see the beautiful peaks of Nelion and Batian, only accessible to experienced rock climbers and the now retreating Lewis glacier - a breathtaking and quite emotional view. We made it to Point Lenana summit, the highest trekking path at 5985m above sea level where the temperature was -9, and I was extremely glad of all my layers. It was probably the most difficult physical challenge I have undertaken.

Throughout the journey, I had been accompanied by my trusty I ❤️ Bromham tote bag which had held all of my very valuable snacks. At this point, it seemed remiss not to bring it out for a photo opportunity, as an entry for the carnival #toteontour competition before we made the several hour trek back down to our last camp at Chogoria Road Head.

I am fairly sure it may not win the competition for the furthest distance travelled, but I am hoping there may be a bonus prize for the highest altitude reached.

Since then it has also accompanied me to Slovenia on a family holiday and I look forward to seeing where everybody in the village has managed to get theirs over the summer. It may make an appearance on this year's school expedition to Mount Toubkal in Morocco and a little DofE trip to Exmoor by the end of the year if it's lucky! Visit the Bromham Carnival Facebook page and post a photo of your tote bag on its travels. If you haven't bought one yet there is still time!

Claire Smart



BUSY KIDS NURSERY

Bromham, Wiltshire

01380 859389 busykidsbromham@outlook.com



We have enjoyed lots of fun activities over the summer holidays at Busy Kids. We have had a junk modelling week where the children have been using their creative skills to design and make some fabulous models. As always, we have spent lots of time outdoors exploring nature. We also made our own paper boats and played with them in the water to see how well they sailed.



We were fortunate enough to have some lovely visitors at Busy Kids over the summer holidays. Penny kindly brought in her two ponies, Galli and Oromo. The children were all absolutely thrilled to meet the ponies. They were very brave and enjoyed stroking them. We talked about how their ears followed different sounds and their eyes were black.





BUSY KIDS NURSERY

Bromham, Wiltshire

01380 859389 busykidsbromham@outlook.com

JOIN OUR COMMITTEE!

We are looking for people to join our Committee to help drive Busy Kids forward and continue to provide affordable childcare for the community. So, calling all parents, carers, grandparents, friends and community minded individuals!

If you would like more information, please get in touch.



SPACES AVAILABLE!

We have spaces available for children to join Busy Kids.

We are a vibrant and exciting nursery with a dedicated and professional team of experienced staff who are on hand to make sure your child learns, develops and has fun. At Busy Kids we encourage children to be unique, creative, confident and independent.

We offer childcare places within our baby room, toddler room and pre-school room, as well as running a breakfast and afterschool club and a holiday club during the school holidays.

Please contact us for more information.



Ways to help raise money for Busy Kids...

You can help to raise money for Busy Kids by ordering your children's nametags through mynametags.com. You just need to add the code 14627 at the checkout and they will donate 24% of the order value to Busy Kids.



You can also donate by using Amazon Smile. All you need to do is go to smile.amazon.co.uk and add Busy Kids as your organisation. You shop in exactly the same way as you normally would on Amazon and they will donate 0.5% of the price of eligible purchases to Busy Kids.



You can raise money for Busy Kids through StampTastic as well. Use code SN152EY or follow this link <https://bit.ly/STAMPSN152EY> to earn commission for Busy Kids Fundraising.



Get to know

Community Messaging

Alerts from Wiltshire Police

YOUR FORCE, YOUR AREA

- Receive alerts from your local Community Policing team and partners
- Reply directly to alerts from officers
- Receive alerts by email, text or voicemail
- Over 15,000 subscribers in Wiltshire and Swindon
- It's FREE to subscribe



SCAN HERE



Wiltshire and Swindon

pcc

Wiltshire & Swindon
Community Messaging

www.wiltsmessaging.co.uk



APT GROUP SERVICES



Your paragraph text

Building and Designing your dream space

Innovative Property Development, Construction and Maintenance

We provide Electrical and Building services to the Commercial and Domestic Market. Our friendly and professional team provide an outstanding service to all of our clients.

EV CHARGER POINT INSTALLER ELECTRICAL SERVICES BUILDING WORKS GARDEN DESIGN AND LIGHTING LIGHTING DESIGN HOME RENOVATIONS SMART HOME TECHNOLOGY KITCHEN RENOVATIONS SECURITY SOLUTIONS



01380 711 781

aptgroupservicesltd.co.uk

**PLEASE HELP US
TO DRY UP!**

**£3000 BANKED SO FAR FOR
THE REBUILD FUND**

BROMHAM TEA TOWEL

For sale in the Clubhouse Cafe
every Thursday & Friday
10.30 am - 1.30 pm

£10 each
or
10% OFF
when you buy
2 or more



To place an order contact...

rachel.prichard@btinternet.com or text 07759 009507

State your name, number of tea towels, address and contact details.
Payment will be due on delivery of order via cash or cheque.

WILTSHIRE CERAMIC STUDIO

Your local clay makers' space

*Parties ♦ Date
Nights ♦ Lessons*



WILTSHIRE CERAMIC STUDIO.CO.UK

Stockham Marsh Farm, Foxham

☎ 07543388124

*Safeguard yours and your
family's future today*



RMD & Associates

— WILLS & LASTING POWER OF ATTORNEY SPECIALISTS —

Rudi Dalby
07791879774

www.rmdandassociates.com

BOYD WILSON DESIGN

DECORATING + DESIGN STUDIO



Interior Painting
Color Consulting
Faux finishing + Murals
Interior Design
Art + Decor + Furnishings
Architectural Drawings + Design
Landscape Design Concepts
Small + Large Jobs

MAGDALEN BOYD-WILSON
DECORATOR
INTERIOR DESIGNER
FINE ARTIST



WWW.BOYDWILSONDESIGN.COM TEL: 07833 863 998 MBOYDWILSON@GMAIL.COM

ACTIVE PLUMBING SUPPLIES



-  Plumbing & Heating Supplies
-  Boilers
-  Radiators
-  Solar Panels & other Green Technologies
-  Water Softeners & Salt



1 Stanier Road | Porte Marsh | Calne | SN11 9PX
www.plumbingsuppliescalne.co.uk

01249 818811

Open: Mon - Friday 7.30am - 5pm & Sat 8am - 12pm

ACTIVE KITCHENS | BATHROOMS DOMESTIC APPLIANCES

-  Bathrooms, Wet Rooms & Shower Rooms
-  Bespoke Kitchens
-  Granite, Silestone & Laminate Worktops
-  Washing Machines and Dishwashers
-  Kitchen Appliances,
Integrated
or Freestanding



01249 813871

Open: Mon - Friday 8am - 5pm & Sat 8am - 2pm



AUDI VW CENTRE

B R O M H A M

We are now taking bookings for MOT's at our custom built new workshop located in Bromham.

All brands & models catered for.

Please call **01380 850300**
or visit
www.audivwcentre.com



Established 1984

Chris Caravan Services

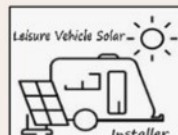
Your Local Mobile Caravan & Motorhome Habitation Service Engineer



07849-267589



chriscaravanservices@gmail.com





AARON & JONATHON BEWLEY OF
AJB FUNERALS



LEAFY LANE

NATURAL BURIAL WOODS

We are an independent, award winning, family run funeral directors and natural burial ground owners, led by Aaron and Jonathon Bewley

- Available 24-hours
- Bespoke and tailored services inc eco friendly options
- Electric Tesla Limousines
- Pre-paid funeral plans



Leafy Lane Natural Burial Woods is the ideal choice for those seeking somewhere elemental and beautiful to have a funeral and remember a loved one. Contact us for more information on burial and ashes plots and memorial trees.

ENQUIRIES@AJBFUNERALS.CO.UK
WWW.AJBFUNERALS.CO.UK

HELLO@LEAFYLANEWOODS.CO.UK
WWW.LEAFYLANEWOODS.CO.UK



57A PICKWICK ROAD
CORSHAM
WILTSHIRE
SN13 9BS

T. 01249 713 134

26A CHURCH STREET
MELKSHAM
WILTSHIRE
SN12 6LS

T. 01225 708 736

3B NEW ROAD
CHIPPENHAM
WILTSHIRE
SN15 1EJ

T. 01249 660 554

LEAFY LANE WOODS
LEAFY LANE
CORSHAM
SN13 0LD

T. 01249 713134

OLIVER'S ELECTRICAL Ltd

YOUR LOCAL ELECTRICIAN

Fully Qualified Electrician

Over 15 years experience

Based on The Pound in Bromham

Call Ashley Oliver - 07946 588817



The Smithy Clinic

The Old Smithy, 1, The Pound, Bromham, SN15 2HE

PHYSIOTHERAPY

Relieve pain and restore function through Physiotherapy.

We are able to treat:

Sports injuries

Musculoskeletal

Neurological

and a range of other conditions

Other Therapies available:

Acupuncture

Homeopathy

Podiatry

Sports and Remedial Massage

Phone: 01380 850595

Email: reception@smithyclinic.co.uk

Website: www.smithyclinic.co.uk

Opening Hours:

Monday – Friday 9 a.m. to 5 p.m.

*Occasional clinics on Saturday mornings
- please telephone for details*

Online booking now available via our website



THE GREYHOUND

B R O M H A M

We are a multi-award-winning country pub and restaurant serving delicious homemade food with an ethos of excellent quality ingredients and good value for money.

We have a vibrant bar & a charming restaurant. Enjoy our delightful garden with a patio/terrace area, garden kitchen and new for Summer our Mr Whippy Ice Cream & Slushy Shack!!

OPEN: We are now open on Mondays 12pm - 9.30pm, Tue: 12pm - 9.30pm, Weds & Thu: 12pm - 10pm, Fri & Sat: 12pm - 10.30pm, Sun: 12pm - 6pm

High St, Bromham, Wiltshire SN15 2HA
01380 850241 | thegreyhoundbromham.co.uk

Have you visited our sister pub.....?

THE GEORGE INN

S A N D Y L A N E

We offer a delicious West Country Carvery, served daily alongside our tasty pub-classics menu.

We also have a great range of draught beers, quality cask ales and wines on offer. You can enjoy your meal in our oak-beamed orangery, which looks out over our lovely beer garden and the countryside beyond.

Special Offer:

Wednesdays & Saturday Evenings
2 Carverys for £25

T&C's Apply (Maximum table size 6 guests)

Carvery now being served Wednesday to Sunday lunchtimes & Wednesday evenings.

OPEN: Weds to Sat: 12pm - 3pm & 5pm - 9.30pm,
Sun: 12pm - 6pm

Sandy Lane, Chippenham, Wiltshire SN15 2PX
01380 850403 | georgesandylane.co.uk



11th Hour Escape Rooms

Can you escape a locked room in 60 minutes?

Find clues, solve puzzles and locate keys!

We have 2 wonderful themed & immersive rooms to choose from



Victoria's Last Challenge - Escape the attic with your inheritance Criminal Record - A murder mystery/whodunnit escape room



Find us

Offices above Audi Sales Centre,
91 Devizes Road, Bromham, Chippenham,
Wiltshire, SN15 2DZ.

01380 609608

Enquiries@11thHourEscapeRooms.co.uk

www.11thHourEscapeRooms.co.uk



Esther Smith Massage



Swedish / Relaxation

Sports & Remedial

Deep Tissue & Trigger Point

Pregnancy Massage



The Gardens, Bromham

07815 424501

contact@esthersmithmassage.co.uk



Baby Massage Classes

Baby massage is a wonderful, soothing therapy that calms your baby, creates bonding time and promotes healthy development

Small intimate groups for individual attention and ongoing support

4 week course of 1 hour sessions

Suitable for babies 6 weeks to pre-mobile



The Gardens, Bromham

07815 424501

contact@esthersmithmassage.co.uk



Cathy's Yoga classes



WELL WOMAN YOGA

Open to women of all ages

Tuesdays 9.30am-10.45am at Rowdefield Education Centre

Wednesdays 7.30pm-8.45pm at White Horse Yoga Centre, Devizes

MUM & BABY YOGA

From 8 weeks after birth

Tuesdays 11.00am-12.15pm at Rowdefield Education Centre

PREGNANCY YOGA

Wednesdays 6.00pm-7.15pm at White Horse Yoga (Devizes)

From 12 weeks of pregnancy onwards

CHAIR YOGA (online via Zoom)

Fridays 11am-12 noon

Open to all (men and women) – all you need is a chair!

WELL WOMAN YOGA (online via Zoom)

Mondays 7.45pm-9.00pm & Fridays 9.15am-10.30am

Open to women of all ages

Gentle yoga practices to promote physical and mental balance and a feeling of calm vitality. Work towards helping to improve circulation, postural alignment, flexibility, muscle tone and balance. Restorative practices and breathing techniques accessed in a safe and supportive environment.

No previous yoga experience necessary.

If you are interested in any of these classes please email Cathy Welch on cathywelchyoga@gmail.com or call/text 07960 330131

Online booking: www.bookwhen.com/cathysyoga

Website for yoga & homoeopathy: www.womenswellnesswiltshire.com

GRAY & AMOR LTD.

CARPENTRY & PROPERTY RENOVATION

Covering all aspects of property renovation and maintenance.

View our range of services online or call to discuss your project.

01380 587006 / 01672 596006

info@grayandamor.co.uk www.grayandamor.co.uk



Beautifully Bespoke Ceremonies

Weddings
Funerals
Namings
Vow Renewals

www.mwcelebrant.co.uk

Tel : 07919598013



LISA LAMB YOGA

YOGA CLASSES FOR ALL ABILITIES TO IMPROVE STRENGTH, BALANCE & FLEXIBILITY ALONGSIDE A SENSE OF WELLBEING.

DAY	TIME	LOCATION
WEDNESDAY	10:45am-11:45am	MH Studios, Bromham
FRIDAY	10:45am-11:45am	MH Studios, Bromham

COST £8 PER CLASS
BOOKING ESSENTIAL

FOR MORE CLASS INFORMATION PLEASE EMAIL

LISALAMBYOGA@GMAIL.COM

CALL/TEXT: 07504615556 - FACEBOOK PAGE: LISA LAMB YOGA

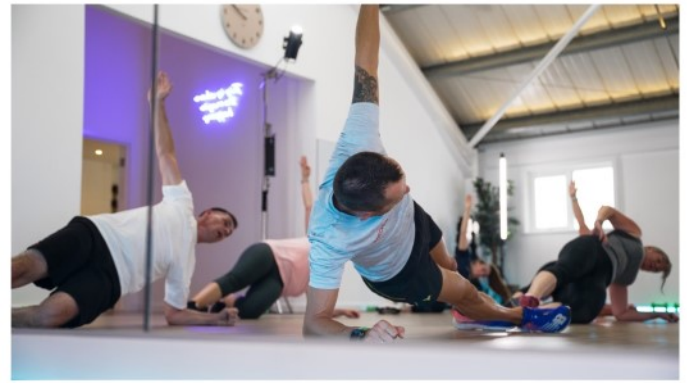


M | H Studios

- Private Fitness & Wellbeing -
Luxury, boutique fitness and wellbeing studio nestled in the heart of Bromham, Wiltshire
www.mh-studios.co.uk
mel@mhunterpt.com



Group Fitness Classes / Les Mills / 1-1 Private Training / Sports Massage




Lead The Way
DOG WALKING

Friendly, professional and reliable dog walker based in Bromham.

- Fully insured
- DBS checked
- Pet first aid trained
- 100% animal lover!

Please contact me for more information and to book in a free meet and greet.

07907995022
Leanne.ltw@gmail.com
@LeadTheWay




BEWLEY
FUNERAL DIRECTORS

Our family are here for your family

Our family have been serving Bromham and the surrounding area since 1970.



- 24hr Personal Service • Home Visits
- Pre-paid Funeral Plans

64 New Park St. Devizes
01380 728008

15 Bank St. Melksham
01225 702521

contact@djbewley.com

www.bewleyfunerals.com

The Farm Cookery School

Christmas MENU

Welcome Fizz & Canapes

Main Dishes

Steak with Diane Sauce, Chunky Chips & Peas

Chicken or Vegetable Tikka Masala, Basmati Rice & Roti

Turkey Breast with Gravy, Green Beans & Roast Potatoes

Lemon Chicken, Dauphinoise Potatoes & Trio of Veg

Roasted Butternut Squash Risotto

Desserts

Christmas Pudding

Chocolate Orange Brownie

Sticky Toffee Pudding

Lemon Posset

28th November or 4th December (6.30pm - 9.00pm)

7th December (11.30am - 2.00pm)

13th December or 15th December (6.30pm - 9.00pm)

£40.00 per person

Vegan and Gluten Free options available on request

www.thefarmcookeryschool.co.uk

Bespoke Group Events are also available

www.thefarmcookeryschool.co.uk

Bromham, Wiltshire, SN15 2DS

01380 859478

Get Your

MILK
@ MILE ELM

CALNE, SN11 0NE  fears.situation.observe

 Find us on
Facebook

SELF-SERVICE VENDING MACHINE

Your local farm shop

Self service vending machines

Fresh milk produced from our own dairy herd

24 different milkshake flavours available everyday

Also available, our range of locally sourced goods:

Bacon

Sausages

Ham

Free Range eggs

Butter

Cheese

Home Made Cakes, Savoury Snacks & Pies

Coffee, Hot Chocolate & Tea

Lacock Dairy Ice Cream

Honey

Ramsbury Rapeseed Oil

Bottled Cake Bakes

Reusable, Branded 1 or 1/2 litre glass bottles

**See our Facebook & Instagram Pages
for more info and regular updates**

OPENING NOVEMBER 2022

A secure, 1.5 acre Dog Walking Paddock

MILE ELM, CALNE, SN11 0NE

Open 06.00 - 21.00hrs



Your first step to healthy feet

Feet First Foot Care Services is a foot care clinic that offers services throughout Melksham and surrounding villages. We treat common foot conditions: corns, hard skin, ingrown nails, diabetic feet, verruca, athletes foot, fungal infections and more.

Call us to book an appointment

01225 405 168

6b Littlebrook Courtyard, Bath Road, Melksham, Wiltshire SN12 6LP

Email: info@feetfirstfootcareservices.co.uk

www.feetfirstfootcareservices.co.uk



WILTSHIRE CERAMIC STUDIO

Your local clay makers' space

Parties ♦ Date Nights ♦ Lessons

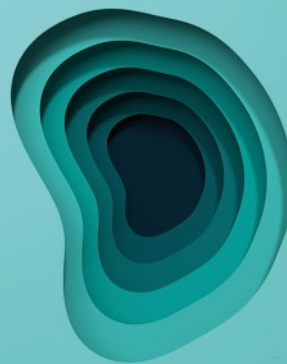
Winter Pottery Workshops



WILTSHIRECERAMICSTUDIO.CO.UK

Stockham Marsh Farm, Foxham

☎ 07543388124



TYMPAHEALTH

Hearing loss?
Ear ache?
Blocked ears?

It could just be *wax*

We can help with that & more...
Book a 30 minute ear & hearing
health check-up today

- * Ear health examination
- * Safe, best practice ear wax removal using micro suction
- * Certified hearing screening test

Call us to book an appointment

01225 405 168





THE WESTBROOK

Open Wednesday to Sunday

Please see our website or our Facebook page for our current Opening Hours and Food Serving times.

To book a table please call us on 01380 850418


www.westbrookbromham.co.uk

LS architectural design

Thinking of extending, converting or replacing your existing home?

With over 25 years residential design experience in the Wiltshire area, we offer professional architectural services at affordable prices.

Call or email today for a free, no obligation, consultation:

 07768 808268

 lsarchitecturaldesign@outlook.com

For more information on our services and projects or to read what our past and present clients think of us, please look us up via our website:

 www.lsarchitecturaldesign.co.uk

MAX MOWERS

SALES • SERVICING • REPAIRS
ALL TYPES OF GARDEN
MACHINERY

STANDARD SERVICE PRICE LIST

ROTARY MOWER	£70.00
SMALL RIDE-ON	£150.00
LARGE RIDE-ON	£200.00
STRIMMER/BRUSH-CUTTER	£60.00
BLOWER/VAC	£60.00
CHAINSAW/HEDGE CUTTER	£70.00

PRICES ABOVE DO NOT INCLUDE REPLACEMENT PARTS OR REPAIRS

07947112194

MAXMOWERS2012@GMAIL.COM

ANGELL MOTORS

CAR REPAIRS & SERVICING

FIXED PRICE SERVICING

- All Makes & Models
- M.O.T. Service
- Diagnostics
- Brakes & Clutches
- Welding & Repairs
- Air Conditioning Repairs
- Volvo Trained Technician
- Towbars Fitted
- Local Collection/Delivery

TELEPHONE: 01225 707140

Email: angellmotors@sky.com • www.angellmotors.co.uk

Unit 4 Strattons Walk, High Street,
Melksham SN12 6JL (rear of Poundstretcher)



LAURA MAYES

YOUR WILTSHIRE COUNCILLOR FOR BROMHAM

Please contact me if you have any Council issues including:

- **Planning**
- **Housing**
- **Education, Children's Safeguarding**
- **Highways – potholes, road schemes, speeding**
- **Fly tipping and waste**
- **Adult Social Care**



I am here to offer advice and support so please get in touch:

Email: Laura.Mayes@wiltshire.gov.uk

Tel: 07855 819343

Facebook: Laura Mayes – for Bromham, Rowde and Roundway

STONEHEATH

FITNESS & THERAPY

Personal Training 1:1, 2:1
& Group Sessions
Fitness Classes, Online Plans
& Coaching
Sports, Deep Tissue
& Pregnancy Massage



Located in Bromham

07870133317

www.stoneheathfitnessandtherapy.com

DEEP BLUE

Pool Management Ltd

Swimming Pools

Hot Tubs

Chemicals

Pool Toys & Inflatables

Hot Tub Service & Repair

Pool Maintenance

Sauna & Steam



Tel 01380 721314

www.deepbluepoolsandspas.co.uk



WAYSIDE LODGES and B&B

Self catering accommodation

Bed and Breakfast plus room only

Short or long term guests catered for

Cosy, modern accommodation

Direct access to private woodland

Flexible bookings – family or business welcome

Tel 07770 774463 or mail@jandlseed.co.uk



The Five Elements Retreats

Based in Bromham on New Road

Offers you a way to relax the mind and body,
in a natural non-invasive way.

Reiki and Animal Reiki

Reiki Drum healing and / or Journey

Ear Candles

Hand Reflexology

Chakra balancing

Oracle card readings

Sound Healing

Reiki training available for all levels

**Bespoke healing experiences
and Wellness Days**

Contact Trudi on 07810 – 374053

Email: Trudis36@gmail.com

www.thefiveelementsretreats.co.uk



Change and Wellbeing Therapy

cognitive behavioural therapy - hypnotherapy
relaxation - mindfulness - stress management

Face to face appointments now available at:
The Therapy Rooms, 32 New Road,
Chippenham, and in Bromham

anxiety - stress - phobias - chronic pain -
habits - poor sleep

life goals: career - personal life - sports

Call for a chat, or email:

t: 07702 113544

e: heather@northwessextherapies.com

w: www.northwessextherapies.com

“Don’t shiver, We deliver” Seasoned hard wood logs



Call James

01380 850312 or 07970 781828

Most tree work undertaken

GARRY LOTT PAINTER AND DECORATOR



**30 YEARS EXPERIENCE
LOCAL TRADESMAN**

**FOR FREE ESTIMATES CALL
07971 450058**

WILTSHIRE DIGITAL

Aerials, Satellite, CCTV, WIFI & more...

With over 15 years combined experience we are fully insured installers of Aerials, Satellites, CCTV, WiFi range access points and much more across the whole of Wiltshire and beyond.



For a free quote contact your local experts
 Phone: 01249 848747
 Email: info@wiltshiredigital.com
 Website: www.wiltshiredigital.com
 Facebook: Wiltshire Digital



Are you frustrated by today's digital world? ...



Kathryn Price
07427 104249

kathryn@ksptechcare.co.uk
 www.ksptechcare.co.uk



You're suffering from 'Gadgetitis'
Stop struggling alone!
Call me and I'll get you comfortable and confident with your tech

LAZY ACRE

HOLIDAY LET

DEN & CATH FILLIS

LAZY ACRE
 THE COMMON, BROMHAM
 CHIPPENHAM
 SN15 2JJ

01380 850473
 d.t.fillis@hotmail.co.uk

SELF CONTAINED UNIT COMPRISING: LARGE BEDROOM WITH EN-SUITE BATHROOM PLUS SEPARATE WC, KITCHEN, LARGE LIVING/DINING AREA WITH TRUCKLE BED. COMFORTABLY SLEEPS 4. ALSO SUITABLE FOR WORKMEN WORKING IN THE AREA. COVERED PATIO AREA. AMPLE PARKING.



Service covers all aspects of chimney care from regular maintenance to sweeping, camera inspections and testing.

SOOTY & SWEEP

Service Open Fires, Wood Burners, Multi Fuel Stoves and AGAs. Can deal with specific problems such as birds nest removal and cowl fitting.

Competitive rates and a friendly professional service.

Call Will on: 07789 007418

Or email: william-newell@hotmail.com

Happy Paws Dog Walking and Pet Care Services

CARE FOR ANY & ALL PETS!

We offer dog walks, pet visits and taxi services. Based in Bromham and cover surrounding local areas. Fully insured, DBS approved & accredited with The Professional Dog Walkers Association.

We are experienced with both domestic & exotic pets from big to small!

Please contact us with any questions or to schedule a meet and greet!



Emily: 07940 070206 / Suzie: 07568559556
 happypawsdogwalkingandpetcareservices@outlook.com

@happypawsdogwalkingandpetcareservices
 @happypawsdogwalkingandpetcare
 www.happypawsdogwalkingandpetcareservices.com

Amanda Phillips Local Mobile Hairdresser

Cut & blow dry - £28
 Gent's cut - £15
 Colours from £35 inc. cut
 Hi lights from £35
 Perms - all inclusive £48



Phone for quote 07889 744727
 amandapagethairdesign@hotmail.com

ILES & VINCENT FUNERAL SERVICES

BROMHAM'S RESIDENT INDEPENDENT FUNERAL DIRECTOR



Classic and traditional funeral ceremony, small and intimate service or no service at all with a direct cremation, we are here to help, guide and support you every step of the way with sensitivity, experience and empathy.

24 hour professional & caring service

The Cornmarket, Warminster, BA12 9BX
01985 220161 (24 hours)
info@ilesandvincentfuneralservices.co.uk



FOREVER



**ECO-
FRIENDLY
ALOE VERA
PRODUCTS**

Drink it,
apply it, rub
it in - aloe
for all!

From your local friendly Forever Business Owner
Caroline Palmer - 07753 677432 - caro@aloe-aloe.org.uk

FREE delivery for local customers

Beautiful Handmade Curtains, Blinds and Soft Furnishings

Free measuring and quotations
Wide variety of pattern books to browse at
Rowde workshop



Caroline Flack 07982 985 925
carolineaflack@gmail.com
Marsh Lane, Rowde SN10 5FA



Paul McNeill – Local Painter and Decorator

Professional and Reliable
Qualified and Insured with 20 + years experience

Tel: 07805500185

Email: pm.painting@outlook.com



KDS JOINERY

Enquiries/quotes email:

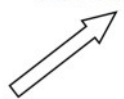
kdsjoinery@gmail.com

Facebook: KDS joinery

Instagram: [kds.joinery](https://www.instagram.com/kds.joinery)



Scan here to view previous work



kyle smith
joiner/carpenter

Services offered: Bespoke Joinery - General
Carpentry - Kitchen/Bedroom installation -
Feature wall panelling - Hardwood worktop
installation

BIKED

WILTSHIRE

- ⚙️ Bike repair, servicing and maintenance based in Bromham.
- ⚙️ No job too big or too small!
- ⚙️ Experienced and honest.
- ⚙️ Qualified Cytech and Shimano mechanic.
- ⚙️ Drop-off or collect and return your bike.



0738 587 9831 | www.biked.me

AB Painting & Decorating Services

- Internal and External
- Qualified and Insured
- Free Quotations
- Professional finish and dust free sanding

Adrian Bolwell

Tel: 01380 850080

Mobile: 07962 590710

3 Church Hill, Bromham

Barlow Bookkeeping

Over 35 years' experience in the industry

**Please contact me or visit my website
if you require any assistance**

Tel 07917 410081

ashley@ashleybarlow.co.uk

www.barlowbookkeeping.co.uk



PIANO and CELLO Tuition

Christine Moore

Experienced teacher - Beginners to Grade 8

Living in Bromham

For more information please contact

Tel: 01380 859384

email: cellorunner4@gmail.com



Tree Services

07785 960379

- ◇ Felling
- ◇ Total Removal
- ◇ Aerial Work
- ◇ Pollarding
- ◇ Crowning
- ◇ Stump Grinding



Thinking
of selling?

Call today for a free valuation

01249 813813

or email

res.calne@atwellmartin.co.uk



www.atwellmartin.co.uk