

# THE BROMHAM HOOT

NOVEMBER/DECEMBER 2023





# NUMBERS YOU MIGHT NEED

Devizes (01380) numbers unless otherwise shown

<b>Parish of Rowde, Bromham and Sandy Lane</b>			<b>Bromham Parish Council</b>		
Rector	Vacancy		Chairman	Peter Paget	850246
Associate Priest	Rev Heather Smith	07702 113544	Clerk	Vacancy	
Church Warden	Vacancy		Email:		
Bromham Contacts	John Drew	850908	<b>Wiltshire Council</b>	All departments	0300 4560100
	Cynthia Wilkinson	859720	<b>The Bromham Clubhouse</b>		
<b>Methodist Church</b>	Rev Craig Manley	01249 818923	Bookings	Dave Paget	859492
	Jenny Blackman	850580	Email:	<a href="mailto:clubhouse@bromhamsocialcentre.co.uk">clubhouse@bromhamsocialcentre.co.uk</a>	
<b>Roman Catholic Church</b>	Fr Paul Gonsalves	723572	Chairman	Pete Davis	850792
<b>St. Nicholas School</b>	Office	850391	Clubhouse Cafe	Den Fillis	850473
PTA Chair	tbc		<b>Bromham Community Hub</b>		
			Email:	<a href="mailto:contact@bromhamhub.org">contact@bromhamhub.org</a>	

## Contacts for Village Organisations

Bell Ringers	Linda Drummond-Harris	07905 188030	Phoenix Club	Sandra Davis	850792
Bromham Amblers	Fiona Burtenshaw	07929 995093	Royal British Legion	Neil Meadows	850360
Busy Kids Pre-school	Kelly York	859389	Short Mat Bowls	George Henderson	01249 815388
Carnival Chairman	Peter Hindle	850925	Spye Park Cricket Club	Tom Mornement	850913
Football Club	Neil Davison	07860 557125	Stitchers	Ann Hannah	850589
Footpath Group	Linda Drummond-Harris	07905 188030	Tennis Court Bookings	Caroline Jones	850260
Friends B & SL Churches	Carol Drew	850908	Twinning Association	Janet Giles	850327
Gardening Club	Judi McKendrick	850611	W.I. President	Lesley Eacopo	850967
Little Angels	Carole Myer	850706	Bromham Ladies	Muriel Sibun	850126
Monday Club	Carol Hindle	850925	Youth Club Secretary	Claire Smart	
Organisers	Cathy Welch	850555			
Mothers' Union	Carole Myer	850706	Drama Group	Penny Lander	859002

Village Website: [www.bromhamwiltshire.org](http://www.bromhamwiltshire.org)

## BROMHAM PARISH COUNCILLORS 2023 - 2024

Name	Address	Tel. No.
Vacancy		
Jim BUTLER	Bromham House Farm, 40 Devizes Road, Bromham, Chippenham, SN15 2DX	850230
Jean COLLENS	17 Church Hill, Bromham, Chippenham, SN15 2JQ	850675
Adam COLLINS	81 Devizes Road, Bromham, Chippenham, SN15 2DZ	850228 / 850186
Phil COLLINS	81 Devizes Road, Bromham, Chippenham, SN15 2DZ	850228 / 07971 120601
Peter HINDLE	85 Netherstreet, Bromham, Chippenham, SN15 2DW	850925 / 07711 423549
Keith MAHONEY	43 The Pound, Bromham, Chippenham, SN15 2HF	850441
Sam PAGET	28 Greystones, Bromham, Chippenham, SN15 2JT	850246
Peter PAGET (CHAIRMAN)	28 Greystones, Bromham, Chippenham, SN15 2JT	850246
Jonathon SEED	Wayside, 12 Chittoe Heath, Bromham, Chippenham, SN15 2EH	07770 774463
Adam SLUSARCZYK	40 New Road, Bromham, Chippenham, SN15 2JB	07834 451728
Cary THOMPSON	44 Yard Lane, Bromham, Chippenham, SN15 2DT	850388 / 07770 846442
Kate WHITE	30 Brick Hill, Bromham, Chippenham, SN15 2JL	850395 / 07709 181280

**The Bromham Hoot is created and produced by:**

*Editor - Peter Hindle, Advertising - Tracey Hutchison, Distribution - Rachel Prichard*

**Please email us at: [bromham.hoot@outlook.com](mailto:bromham.hoot@outlook.com)**

*If you don't get your copy of The Hoot at the usual time or know someone who hasn't, do please let us know by emailing [bromham.hoot@outlook.com](mailto:bromham.hoot@outlook.com) and we'll try to sort it out.*

**Printed by: Springfords and Rose Ltd, 35 Eastleigh Road, Devizes SN10 3EQ**



# WELCOME TO THE BROMHAM HOOT



Welcome to the November - December 2023 edition of The Bromham Hoot.

It's another full magazine with information about the Christmas services at St Nicholas and the Methodist Chapel, details of events in the village and the usual reports and updates from village organisations and clubs.

Thank you to everyone who sent in photos for the front cover. The image we have chosen is from Jennifer Holliday of maple leaves on the church steps. Usually we would try to put a selection of the images in the magazine for everyone to enjoy but, as you will see, this time there was absolutely no space left.



**As this will be the last Hoot of 2023, we would like to wish all of our advertisers, contributors and readers**

## Merry Christmas and a Happy New Year.

The next issue of The Hoot will be for January / February 2024, and will be distributed in mid January.

The deadline for content and advertising is Friday December 22nd.

### WANTED: Bromham Hoot Distributors

I have been delivering the Bromham Hoot since its inception in 2020 and in the summer I joined the small team who distribute the magazines to our band of volunteers who put the magazine through your letterboxes.

I would like to say Thank You to everyone who has, or does deliver the magazines. It is appreciated by the whole village.

Being "new" to the distributing aspect of The Hoot I would like to have a list of people who feel they could deliver to their area of the village in the future. The magazine is produced six times a year. People's commitments change and they become unable to deliver either on a temporary or permanent basis. It would be a huge bonus to have a 'reserve' list of people to call on in those circumstances.

If you feel able to help at all, please contact me, Rachel Prichard, either by email [rachel.prichard@btinternet.com](mailto:rachel.prichard@btinternet.com) or on 07759 009507. I look forward to hearing from you.

### First Aid Course

Several people have asked about the possibility of running a First Aid course for the village in the New Year.

Ian Tuckett has agreed to run a two hour training session covering basic first aid and how to use one of the defibrillators. The training would be free, unless you would like a certificate - in which case there will be a small charge.

**If you are interested, please could you let Ian know by email at [info@tuckett-training.co.uk](mailto:info@tuckett-training.co.uk).**

Once we have an idea of numbers then a firm date and venue can be arranged.



### Best Kept Allotment 2023

After a close competition, the winner of the best kept allotment 2023 is Mrs. Dawn Parr. The Judges (Keith Mahoney & Sam Paget), commented on the great variety of vegetables and wild flowers that Mrs. Parr has cultivated across her three plots, which have clearly taken many hours of time and commitment.

Mrs. Parr received the coveted engraved trophy, and a years free rent for one of the plots.

The Parish Council would like to take this opportunity to thank all those who upkeep their allotments, and anyone who wishes to apply for one, please contact [clerk@bromhamwiltshire.org](mailto:clerk@bromhamwiltshire.org)



## FROM THE METHODIST CHAPEL

Services in November and December (all at 10.30 am unless otherwise stated). Everyone welcome.

<b>Sunday 5 Nov</b>	Mrs Jackie Williams	<b>Sunday 3 Dec</b>	Local Arrangement
<b>Sunday 12 Nov</b>	Remembrance Day Service at St Nicholas Church - Service commences at 3.00 pm.	<b>Sunday 10 Dec</b>	Holy Communion - Rev Craig Manley
<b>Sunday 19 Nov</b>	Local Arrangement	<b>Sunday 17 Dec</b>	Carols by Candlelight at 4.00 pm
<b>Sunday 26 Nov</b>	Holy Communion - Rev Craig Manley	<b>Sunday 24 Dec</b>	Rev Craig Manley (to be confirmed)

Special thanks to Tracey and Phil Collins and Paul and Tanya King for their generous donation of vegetables for our Harvest Festival. The sale of the produce following the service raised £76 for Chapel funds.

We would like to thank the Carnival Committee for their generous donation and all their hard work in organising this event and giving us the opportunity to fund raise for the Chapel.

The next coffee morning will be held on Saturday 4<sup>th</sup> November 10 00am – 12.00 noon. All the usual fellowship and chat, plus delicious cakes. The coffee morning in December will be held on Saturday 2<sup>nd</sup> at 10 00am.

We will be holding our annual Bazaar in the Clubhouse on Saturday 18<sup>th</sup> November from 2 30pm to 4 pm with all the usual stalls, bottle stall, cakes, raffle and serving tea, coffee and cakes. Any donations of raffle prizes, bottles and cake etc would be gratefully received, please contact Jenny Blackman (850580) – Please see poster.

We will be holding our Carols by Candlelight service on Sunday 17<sup>th</sup> December at 4pm, followed by mince pies and tea/ coffee. You are invited to join us to celebrate the true meaning of Christmas – Please see poster.

We would like to thank everyone for their continuing support throughout the year at our many events and wish you a very Happy Christmas and a peaceful New Year.

Jenny Blackman - Bromham Methodist Chapel

### Bromham Methodist Chapel

## CHAPEL MINI BAZAAR



Saturday 18<sup>th</sup> November 2.30pm-4.00pm

“THE CLUB HOUSE”



Gifts

Cakes

Raffle

Refreshments

EVERYONE WELCOME





# VILLAGE ORGANISATIONS & ACTIVITIES

## Bromham W I

The speaker for our September meeting was Kerri Johnson who worked in the NHS for many years in psychotherapy. She has now left the NHS and now has the franchise for the House of Colour in Bath. This is an organisation that helps people to plan their wardrobe using colour analysis to suit their colouring and personalities. The idea of colour analysis came from America and Germany in the 1930's. Kerri was an amusing and entertaining speaker and her talk certainly made us think seriously about the colours we wear during the year, according to what season it is. The competition for the evening was "a favourite scarf" , won by Lesley Eacopo.

At our October meeting we enjoyed a most interesting and informative talk by Mary and Ben Bentley from the mid - Wiltshire branch of the RNLI. They are both volunteers in this organisation and are mainly involved in fundraising for this worthwhile organisation. The RNLI is funded completely from public donations and for the year 2022 the cost of running it was an incredible 188 million pounds. We were shown a couple of short films of rescues in very rough seas and slides of the first lifeboats from the 1800's to the very modern lifeboats of today. The RNLI was founded in 1824, and will be celebrating its bicentenary next year. At the beginning the lifeboats were always manned by men - and women only played a supportive role. It was not until 1969 that women were allowed to be in the crew. The main mission of the crew on a lifeboat is to save lives at sea and then property such as the belongings of fishermen - property that is needed for their livelihood. They also rescue animals - mostly dogs. The competition for the evening was "something orange". This was won by Helen Blackman with her cat Tig, who is our favourite Bromham cat. He had arrived at the clubhouse at the start of the meeting, stayed, so he was put into the competition by Helen. The first time Bromham WI have had a "live" exhibit win!

The next meeting of Bromham WI is on Wednesday 8th November when the talk will be on Derbyshire Well Dressing. Meetings start at 7.30pm in the clubhouse and visitors are always welcome.

To learn more about Bromham W I please contact Lesley Eacopo (850967). New members are always welcome.

**Sheila Sims**

## Monday Club

Monday Club enjoyed a visit to Serena and Craig Dalby's in early September, the weather was warm and we really enjoyed being in different surroundings. As ever our meal was delicious.



A couple of sessions recently have tried to encourage members to chat to people who they don't regularly sit with. Mix it Up Monday had a different arrangement of tables and suggested questions to ask each other. Can you believe that two members only paid £10 or £15 for their first cars? One week we had a feely game – members had to guess the objects in 6 different boxes, (nothing unpleasant!) and more recently we had some games of Beetle which caused quite a lot of laughter! We also keep fit with Ann's Move it Monday and enjoy Serena's delicious home cooked meals.

Thank you to everyone who supported our Autumn Coffee Morning when we raised just over £200. We'd also like to thank the Carnival Committee and the Café Team for their generous donations to our dwindling funds.

We're always looking for new members so why not come along and join us. For more information contact:

**Carol - 01380 850925 or Cathy - 01380 850555**



## Bromham Youth Group

During the summer holidays some of our members took part in a trip to Swindon and enjoyed LaserQuest (Well done Isaak the top scorer), crazy golf and a game of bowling. It was a fun day out and everyone enjoyed themselves and the friendly competition. Thanks also to Claire for driving the Seend Shuttle and getting us there and back.



It's been a busy few weeks back at Youth Club. Members have taken part in netball, tennis, hockey, badminton and football competitions. Plenty of dodgeball and bench ball activities have taken place each week and even a few rounds of Bingo. We are looking forward to our upcoming Halloween party and plenty of Halloween inspired games and activities. The club has welcomed five new members Tilly, Logan, Florence, George and Jack.

The club has recently had some fantastic support which enables us to keep running. We would like to say thank you to the following organisations:

- Netherstreet Plant Sale for donating £400 to the club. Carolyn, Liz, Mike and Steve have always been very supportive of the club. This is a fantastic annual event that has been very generous to local organisations for several years now and it's amazing how much they raise each year and share with local organisations. A huge thank you from everyone at the club.
- Bromham Carnival Committee for donating £500 to the club. The Carnival Committee organise such a fantastic day for the village every year and also other run other popular events leading up to the big day. The club were keen to help support selling tuck at the Carnival teddy trail this year and also enter a bear in this now very popular event. A huge amount of work goes into Carnival every year by a very hardworking committee. A huge thank you from everyone at the club.
- Bromham Clubhouse Cafe for donating £100. Another fantastic team that provides a cafe twice a week for people to meet, socialise and enjoy refreshments. A huge thank you to Den, Cath, Denise and Tracey (H).
- Wiltshire Council and Devizes Area Board for supporting us with a match grant. A huge thank you for continuing to support the club and the young people.



**Darren Barber**

## Bromham Amblers Walking Group

We meet every Thursday at 10.00 am in the village car park by The Greyhound. The friendly group walk gently - with no stiles - locally. About once a month we share lifts to amble somewhere else. We arrange to have coffee somewhere every week at 11 o'clock. We generally have between 8-20 people weekly walking and it's a lovely supportive and fun group.

Fiona Burtenshaw, 07929 995093, email: [fiona@aps.ltd](mailto:fiona@aps.ltd)



## Phoenix Club Committee Announcement

After 32 years of being a Social Club for the Over 50's with an annual program of meetings and days out by coach, the Committee have sadly had to make the decision to close the club after the Christmas Event being held on 12 December.

The decision is based on:

- Having to have a break due to Covid, then the loss of the Social Centre causing us to move to Derry Hill.
- Coach costs and entrance fees have risen steeply making days out less affordable.
- Clubs like Phoenix Club rely on new younger members joining to provide continuity, our members are now all 70+
- The members of the committee have served for many years and now wish to step down without being able to replace from existing membership.

Our members are very sad to be losing this long running community club.

**Sandra Davis**

**Chair of Phoenix Club Committee**

## Bromham Footpath Group

After venturing further south in the county in July our last two pub walks have been rather closer to home.

In August Reg Cox led a walk from Biddestone. Lunch was once again at the Bell in Yatton Keynell as we hadn't had a chance to try out the local pub.

Then in September we decided to revisit the Green Dragon at Market Lavington, this time led by Nigel Tuck. Nigel didn't want to repeat the walk we had done before so earlier in the week had tried out two different routes. The one he chose to take us on turned out to be rather shorter than usual so we had time to explore the village until the pub opened. We were hoping the local coffee shop (cleverly named St Arbucks) would be open but alas it was not, so we decided to visit the church. The church was locked and so was the little museum nearby so we came to the conclusion that, apart from the pub, Market Lavington was closed on Thursdays!

If you would like to join us we meet every Thursday at 09.00 by the Clubhouse for a two hour local walk, except the fourth Thursday in the month when we venture out of the village. If you would like details of our next pub walk please contact me on **07905 188030**. We will be happy to welcome you to the group.

**Linda Drummond-Harris**

## Bromham Gardening Club

Bromham Gardening Club meets on the third Thursday every month in the clubhouse from 7.30 – 9.00pm (unless there is a garden visit).

### Programme for next 3 months:

**16th November** – A talk about No Dig Gardening by David Robinson

**21st December** – A fun celebration quiz and refreshments

**18th January** – Foraging For Food – a talk by Fred Gillam

Fees are £25 per year or £3 per session for visitors – everyone is welcome.

In November we had a very interesting talk by Jackie Thomas from Sustainable Devizes all about gardening for wildlife and what little things we can do to provide food and habitats for our native birds and other wildlife.

### SUTTONS SEEDS DISCOUNT OF 50%

ANYONE is welcome to use our discount code of **SUGS233X** – this will get you 50% off all seeds and 15% off any other live products including potatoes, garlic, onions, plants, bulbs and fruit. You can use it online at [www.suttons.co.uk](http://www.suttons.co.uk) or if you prefer we can provide you with an order form.

Please look for updates and reminders on FaceBook (Spotted in Bromham) and on the village notice boards. We also have email notifications if you'd like to be added. For any information please contact Judi on 850611 or 07789 537775 (preferably by text or WhatApp).

**Judi McKendrick**





# BUSY KIDS NURSERY

Bromham, Wiltshire

01380 859389 [busykidsbromham@outlook.com](mailto:busykidsbromham@outlook.com)



The preschoolers were lucky enough to have a visit from a nurse this term. She brought her special stethoscope, thermometer and oximeter. The children heard their own heartbeats, and measured their temperatures. They then moved on to their own Busy Kids hospital to nurse each other.

We have had a big focus on healthy eating this term. We have created a café in our home corner where the children have been serving delicious food to their friends.

We visited the church recently and the children loved looking at the stained glass windows. When we got back, we decided to recreate our own! We have had a big focus on listening this term and made ourselves big listening ears to wear to remind us what an important skill it is.



This term our youngest children have been learning about their body parts. We have played body part bingo and we have been singing heads, shoulders, knees and toes. We have also been learning about keeping healthy including how to keep our teeth healthy. The children made some lovely teeth paintings.

We have been doing lots of messy play with paint and rollers. We have spent lots of time exploring the woodland area where the children found sticks and went on a bug hunt.







**BUSY KIDS**  
NURSERY

# BUSY KIDS NURSERY

Bromham, Wiltshire

01380 859389 [busykidsbromham@outlook.com](mailto:busykidsbromham@outlook.com)



SATURDAY 2 DECEMBER  
11AM-2PM

ST NICHOLAS SCHOOL,  
THE LEAZE, BROMHAM

SANTA. RAFFLE. CRAFT STALLS.  
REFRESHMENTS  
AND MUCH MORE

Thank you!

We have had lots of wonderful support over the last couple of months from local people and organisations.

We would like to say a huge thank you to Anna Dillon who raised an incredible £1,145 for Busy Kids by doing a 6 hour sponsored spin!! Thanks also to Energym Fitness in Melksham who kindly hosted the event.



We received a very generous donation of £100 from Bromham Clubhouse Café. Thank you very much, we are so grateful.

Thank you so much to the carnival committee for very kindly donating £500 to Busy Kids. It is very much appreciated.

## CHARITY CAR WASH!

On 24th September we held a charity car wash which was a huge success raising over £800 for the nursery. We also had a coffee and cake sale, vegetable stall and tombola as part of the event.

We would like to thank everyone who gave up their time to help us run the event, to everyone who donated a raffle prize or baked a cake and also everyone who came along to support the event.

Special thanks to Pagets Produce who generously donated the veg for us to sell, to the Social Centre committee for allowing us to use the clubhouse and to Neil Davidson and Bromham Football Club for allowing us to use the water supply. Thanks also to Tesco Express Pewsham, Asda Melksham and Halfords for donating car washing supplies and refreshments.

One of our wonderful committee members has been successful again with an application to Tesco to be part of their blue token scheme.

If you shop at Tesco, from the first week of October 2023 until the middle of January 2024 Busy Kids will be one of the charities you can choose to contribute your blue token to at Melksham Tesco Express and Trowbridge Tesco Extra as well as some of the smaller Tesco Express units in Westbury, Trowbridge and Warminster.



If we get the most votes we will receive £1,500, second place is £1,000 and 3rd place is £500 any of which would be wonderful to help with our fundraising.







We are thrilled to announce the establishment of the new Charitable Incorporated Organisation (CIO), the launch of its new website and to reveal the logo for Bromham Community Hub.

Please find out more by going to [www.bromhamhub.org](http://www.bromhamhub.org)

The fresh logo represents inclusiveness, coming together and our commitment to a vibrant future as well as embracing the traditional features of Bromham.

We invite everyone to explore and stay connected with us as we embark on this exciting journey towards a brighter future for our community.

Our website allows us to provide you with a single central point for all information related to the CIO, the rebuilding project and our activities. We also plan to provide you with information about the wide range of activities offered, and services available, in the village. Please take a moment to find the website and read more. On the website we already have a timeline of activity since the fire in June 2021 and this will be updated regularly.

### **Q: Why set up a new charity?**

**A:** The new charity has been set up as a Charitable Incorporated Organisation (CIO). A CIO is both a charity and a corporation with a legal personality which can enter into contracts, hold property in its own name and which meets all the current legal requirements to allow us to conduct business in the same way as a private limited company. However, most significantly, CIO status is often a prerequisite for major grant applications. As a charity all profits must go back into the business, to support the Hub, and to further improve the quality of life for all Bromham residents. The Trustees of the new charity take this responsibility very seriously.

### **Q: Who runs the Bromham Community Hub charity?**

**A:** The Bromham Community Hub is legally accountable to the Charity Commission and must abide by the 'Constitution' document that was approved in April by the Charity Commission. There are five Trustees, the initial group were all invited to start up the charity because of their relevant professional experience and expertise. The Trustees act in a voluntary capacity and will stay in post until October 2024 when, under the terms of our constitution, the initial Trustees must stand down and an election takes place. No Trustee may serve for more than two three-year terms to ensure that the Trustee group is constantly refreshed. More information on our current Trustees is provided on the website.

### **Q: Who will look after the day to day running of the new Hub?**

**A:** The CIO Trustees have been clear from the start, that they want to involve the existing social centre committee in the ongoing management for the new Hub. The team will work alongside the Trustees, who as part of their strategic management of the charity and legal duties, will submit the statutory information to the Charity Commission, and others. We will also be looking to build a bigger team of volunteers from the Bromham community to participate and be involved with business development, fundraising, managing bookings, organising events, liaising with community clubs and activity leaders, maintaining the new building and keeping day to day records.

### **Q: Who are the 'Members' of the Bromham Community Hub CIO?**

**A:** All the adult residents in the Bromham parish can become 'Members' of the Charity by signing up to Bromham Community Hub (via the website in due course) and it will be all of you, the Members, who will vote to elect Trustees going forward and influence important decisions.

## **Q: It seems like nothing is happening – What 's going on now?**

### **1. New Building**

As you will see from the website timeline, while things have appeared to be quiet and nothing happening, a lot of work has in fact been going on in the background to take the rebuilding project forwards.

Since the planning consultation meeting in June (in the marquee), where there was overwhelming support for the proposed building, the architects have refined the drawings and ensured the design meets the vast array of regulations. The necessary surveys to support the planning application have now been completed and the finalised planning application will be provided to the Parish Council for approval very soon.

The Parish Council have indicated that they then wish the Bromham Community Hub (BCH) to take on the procurement process of selecting a building contractor, agreeing the contract and taking over the formal responsibilities of 'Client' at that point.

BCH is very mindful that a number of new laws came into force in October 2023 as a result of the Grenfell fire, and that our Hub construction is classed as 'a controllable structure' and is 'Class 5' under Part B (Fire Safety) building regulations. Acting as the 'Client' for the project BCH would have some new, very clear, legal obligations to undertake. Once it is formally agreed with the Parish Council that BCH is to take on this Client role, the invitations to tender will be prepared.

### **2. Grants and Fundraising**

We are in no doubt that currently the Parish Council does not have enough funds from the insurance payment to rebuild the new building. We need to do some major fundraising to be able to build our new Community Hub.

To enter into any contract, BCH must have sufficient funds available in its account to complete that contract, plus a contingency sum. Initially the Parish Council hoped to obtain £250k from grants to complete the building shell and a further £250k raised locally over time for fitting out the building with furniture, kitchens, room dividers, IT & audio-visual equipment and for landscaping the exterior. There has been a 10% increase in the floor area of the building during the design process, the extra space being needed to meet villagers' design requests and some regulatory requirements. Inflation may well also now have played havoc with these initial estimates, although recent soundings on current construction costs look favourable.

Until the tenders from the construction contractors are returned we do not know exactly how much extra money will need to be raised. BCH will need to move forward with fundraising very soon and we would ask you to watch the website **[www.bromhamhub.org](http://www.bromhamhub.org)** for regular updates and for ways you can help and contribute.

On 11th October BCH re-applied to the Community Ownership Fund for £250k after the first application was turned down. We believe we have strengthened areas of weakness in the business plan and that the reapplication, involving many hours of detailed work, will be successful.

We have also submitted an 'Expression of Interest' to the National Lottery Community Fund and recently received a positive response, inviting us to make a formal application. We have had an initial face-to-face meeting with a Lottery representative and need to have construction tenders returned, and costs known, before we submit the full formal application for up to £100k. As part of their due diligence procedures for grant approval The Lottery will scrutinise our procurement process, and the tender assessment decision-making process we have used to identify our preferred contractor. We have already started working on this Lottery application, as again there is a lot of detail required.



An application has also been made to Community First, which is a fund set up by waste management companies. We have targeted this application at funding for furniture, as we will not know the outcome of the application, and the funds cannot be made available, for 18 months.

We are still waiting for HMRC to register us for Gift Aid so that we can get the Buy a Brick campaign up and running again. As soon as this is confirmed Mel will be in touch with everyone who has already promised their support.

Finally, please see the advert for our *easyfundraising* link at the bottom of this page. *easyfundraising* partners with over 7,500 brands including Amazon, John Lewis and Argos who will donate part of what you spend with them to us at no cost to you.

**BCH needs to start major fundraising activities to fill the funding gap between what we have already and what we need. If anyone reading this has professional fundraising experience, or good suggestions, innovative ideas and is willing to help BCH with fundraising, please get in touch at [contact@bromhamhub.org](mailto:contact@bromhamhub.org)**

### 3. Developing the Website

We are really pleased and excited with the positive feedback we have already received about the new website. Thank you.

We hope that Bromham Community Hub will become more than just a building, and the website will eventually also become the main “Electronic Bromham Hub” – a way for everyone in the village to easily find out on-line about events and activities going on, as well as provide ‘click links’ to our main partners’ websites.

We do need help to gather the information about events and meetings from clubs and leaders to make this happen. If you run a club or an activity for Bromham residents and would like to promote your club information e.g. explanation of who you are and what you do, any planned activities, photos of recent events, your calendar for the year uploaded, or a hyperlink on our website to your own website, please get in touch at [contact@bromhamhub.org](mailto:contact@bromhamhub.org). We are collecting information now.

Soon we will be asking ‘Businesses’ and ‘Services’ located in the Bromham parish if they would like to be linked to our website so that residents can search for the contact details of local people to work with. If you are a large business, a small business or a village service such as a hairdresser, dog walker or clothing alteration business etc, please start thinking about what information you would like to share.

Our resources to complete the website work are limited, and we are having to pace ourselves – hence gathering and uploading business and services information will have to be in a few weeks’ time. Anyone who could volunteer to help collate all of this information with us, please let us know!



**Shopping online? Help the hub.**

**Bromham Community Hub**

is now registered with *easyfundraising*,  
so over 7,000 brands will donate to us for **FREE**  
every time you shop with them online.

For more information  
scan the QR code or  
follow the link below



[easyfundraising.org.uk/causes/bromham-community-hub](https://easyfundraising.org.uk/causes/bromham-community-hub)

 **easyfundraising**

You shop, brands donate to us



## St Nicholas School

September saw St Nicholas School welcome the new Reception children who have settled in wonderfully, making new friends and getting to know their teachers quickly. Our new balance bikes, school lunch, PE and learning outside are popular activities. Lots of children brought their teddy bears and enjoyed our bedtime story session while their parents joined teachers for a workshop on supporting learning to read at home.



In a recent survey, our new parents have said;

*"It's small and personal. I feel every child shines."*

*"Small, friendly school where the children are encouraged to do their best."*

*"Good school, staff do their very best to meet every individual's needs and aspirations."*



### Clubhouse Café

An amazing month in the Cafe in September, after all expenses the sum of £1418 was raised, and we were able to donate £100 each to: Busy Kids; Bromham Youth Club; Bromham Monday Club; Mothers Union (to help local underprivileged family). The balance will be divided between Dorothy House Hospice, Wiltshire Air Ambulance, Julia's House and EVS Blood Bikes.

The Clubhouse Cafe is open Thursday and Friday from 10.30 until 1.30, please come and visit, it is such a lovely, friendly atmosphere.

Thanks to all our patrons for your continued support.

### Charity Events

Thanks to everyone who attended our recent charity events.

Firstly the Curry and Quiz night held in The Clubhouse on Friday September 15th. Thanks to our quizmaster David Sibun.

After expenses £492 was raised, which will be going to Dorothy House Hospice soon.

Secondly, the History Night held in St Nicholas School on Friday October 20th. Many thanks to Dennis Powney for his very interesting and informative talk and slideshow. Also thanks to Hans Shell for setting up the sound system.

We had around 85 people attend this event. After expenses this event raised £942 which will be going to Wiltshire Air Ambulance.

We cannot thank you all enough for supporting these events because without you all they could not happen.

**Cath, Tracy (Collins), Denise and Den.**



## BROMHAM & ROWDE CHURCHES

Christmas is on the horizon once more, even though I'm sure summer was just last week! As I write Israel/Palestine is in the grip of war. Bethlehem, the place of Jesus' birth and which we sing about in our Christmas carols, doesn't currently live up to the picture we have of it. 'Above thy deep and dreamless sleep the silent stars go by' says the carol, but I imagine the residents aren't sleeping that well just now.



We are so fortunate to live in this quiet part of Wiltshire. We may sometimes disagree with our neighbours, but we don't face bombs and rockets. I'm grateful for the peace.

As we prepare to celebrate Christmas, let's remember that Jesus came to bring peace to the world and to every one of us. I hope the celebrations, with presents, food and parties, will not overshadow a determination to work for peace and justice here at home, in our country and in the wider world.

I wish you all a peaceful and happy Christmas.

**Heather**

### Church Services in November & December in Bromham, Sandy Lane and Rowde

Any changes to service times will be put on our Facebook page – Churches of Rowde and Bromham.

	8.00 am Eucharist (Book of Common Prayer)	10.00 am Eucharist
<b>Sunday 5th November</b>	Rowde	Bromham
<b>Sunday 12th November</b>	Sandy Lane	Rowde
<b>Sunday 19th November</b>	No Service	Bromham
<b>Sunday 26th November</b>	Sandy Lane	Rowde
<b>Sunday 3rd December</b>	Rowde	Bromham
<b>Sunday 10th December</b>	Sandy Lane	Rowde
<b>Sunday 17th December</b>	No Service	Bromham
<b>Sunday 24th December</b>	No Service	No Service (see Midnight Mass)
<b>Monday 25th December</b>	Sandy Lane	Bromham and Rowde
<b>Sunday 31st December</b>	No Service	Rowde

	Other Services
<b>Sunday 12th November</b>	Bromham - Act of Remembrance 3.00 pm
	Rowde - Act of Remembrance 3.00 pm
<b>Saturday 9th December</b>	Bromham - Christingle 3.00 pm
	Bromham - Bellringer Service 4.30 pm
<b>Sunday 10th December</b>	Sandy Lane - Carol Service 4.00 pm
<b>Friday 15th December</b>	Bromham - 9 Lessons & Carols 6.00 pm
<b>Sunday 17th December</b>	Rowde - Carol Service 6.00 pm
<b>Sunday 24th December</b>	Rowde - Crib Service at the Rowdey Cow 2.30 pm
	Bromham - Crib Service 4.00 pm starting at The Greyhound
	Rowde - Midnight Mass 11.30 pm

#### Contacts during the interregnum:

Revd Heather Smith      07702 113544 / [revheathersmith@gmail.com](mailto:revheathersmith@gmail.com)

John Drew                      01380 850908

Sarah Bowler, Administrator    [sarahbromhamandrowde@gmail.com](mailto:sarahbromhamandrowde@gmail.com)

Web page :                      [www.achurchnearyou.com/church/9620/](http://www.achurchnearyou.com/church/9620/)



## Letter from the Parochial Church Council

This letter was put together during the mini heatwave that we enjoyed in mid-October, which contrasts greatly with the greyness of early winter that you are probably seeing as you read this. We continue to be thankful for the ability to grow vegetables and fruit and marvel at all of our flowering species - but when the rain falls, what a chore to have to mow the grass so soon after the last cut!

Our summer warblers, swallows, swifts and martins have by now arrived back in their overwintering countries in Africa to be replaced by the Scandinavian thrushes that compete with our own thrush family for the berries in our hedgerows and any wind fallen fruit.

As we tidy up our gardens at this time, do try not to be too fastidious, as many of God's tiny creatures and the eggs of insects will be spending these cooler months in amongst the dead foliage ready to emerge next spring and ready to be hunted by the returning warblers and our own residents. What a fascinating cycle if only we make time to appreciate it.

Talking of produce, sincere thanks to Collins Farm Shop and Stills Farm for their generosity in donating fruit and vegetables for the well-attended Harvest Festival. The display of their gifts was enhanced by being arranged on an antique Covent Garden market trader's barrow with the barrow being used as it would have been in London years ago. After the service, the produce was donated to Downlands special school in Devizes.

We have also received another donation, this time financial, so a very big thank you to Spye Park for their very generous gift to our Parish Church recently. Every penny counts in keeping our Churches in good repair, funding events and keeping our Church in the forefront of our community. Thank you Spye Park for your kindness and support. It is very much appreciated.

At our one-day stall in the Devizes Shambles, we sold £264 of various homemade jams and other preserves. If you missed that day, we have another date booked at the same venue on Thursday December 7th. If you are unable to see us in December, you can always pop into our Churches and purchase the preserves there at the bargain price of £2:50 per jar or 5 jars for £10. Ideal Christmas presents!

By now, the closing date for applications for our new priest will have passed and obviously, we are hopeful that a suitable priest has successfully completed the interview process so that by the end of January 2024 we will know who that person is. Fingers crossed!

A reminder now, that if you or anyone you know is unable to attend Church Services, we are happy to bring the Sacrament of Holy Communion to you in your home. We know that those of you who have already participated have been very grateful and appreciative of this. So do ring John on 850908 or Cynthia on 859720, either of whom will arrange this for you.

As each year draws to a close, we generally look back and reflect on what has happened in our lives over the past twelve months and this year especially, we have seen too many deaths in our community. Death of course, is inevitable and part of life but somehow in 2023, it seems that our Parish has had its fair share of saying "Goodbye" to loved ones, the latest being Rod Amor, Janet Giles, (both local councillors in the past) and also The Revd. Clive Raybould. We extend our sympathies to each of their families and friends and may they Rest in Peace. Indeed, as we look back remembering those friends who are now gone, we continue to hold them in our thoughts and prayers as well as those unknown to us.

As we've mentioned before, both of our Churches are open every day, so please don't hold back or be fearful of opening the ancient oak door to go inside for a moment of peace and solitude whenever you feel the need to do so.

As we look back, we remember the celebrations of Marriage and the Christenings held in both of our Churches this year, reaffirming that both Churches are truly the perfect place to confirm love for each other and wellbeing to all. May the love that that was blessed, grow with time.

As Christmas approaches, we have a number of events to look forward to in our churches including: the Bromham Bash; our annual Christmas Tree Festival; the Christingle Service for children of all ages, Carol Services in Bromham and Sandy Lane and the Crib Service. Details for all these events can be found on other pages of the Hoot.

Do come along with your friends and families. The fun, the Services and the Christmas trees really do enable us to put away any anxieties or sadness in these wonderfully decorated and lit atmospheric spaces, getting everyone in the spirit of Christmas whether believers or not.

Finally, here are three actual notices that were spotted on different Church Noticeboards recently.

*"Don't let worries kill you, let the Church help".*

*"While the Rector is on holiday, any messages can be given to his secretary"*

*"Our vergger unveiled the Church's new giving campaign with the slogan, 'I upped my giving, up yours'.*

**We wish you all a Joyous Christmas and a Healthy and Prosperous New Year, Cynthia Wilkinson, John Drew, Anne Smith, Linda Drummond Harris, Heather Armstrong, Dennis Powney, Phil Bayley, Ernest Escott.**



## **LAURA MAYES - Wiltshire Councillor for Bromham, Rowde & Roundway**



### **An extra £10m to improve our roads!**

Residents and Parish Councils tell me regularly that the maintenance of our roads is one of their top priorities. I'm really pleased therefore, that prudent financial management of Wiltshire Council's budget has meant an extra £10m has been secured for preventative highways work.

This will be on top of the £14m the council will spend this financial year on highways maintenance. The additional money will be spent on preventative maintenance and a road resurfacing programme including small, local repairs to the highways; verge repairs on rural roads and materials to support volunteers working on public rights of way. Work on potholes will continue in parallel, with £2m existing funds and the government's recent £3.6m additional grant.

The preventative investment will reduce the number of potholes forming on the road network, improve road safety across the county for all road users, improve customer satisfaction and reduce the number of highway defect reports to the Council, which will save officer time by reducing the number of ad-hoc inspections required and expensive reactive works.

The programme of additional highways work will begin with identifying the roads due to be resurfaced and give Area Boards the opportunity to comment before the work programme begins in earnest from April 2024 until the end of 2025. Meanwhile please do continue to use My Wilts to report concerns.

**As ever, please contact me if you need help with any Council issue including Highways, Anti-Social Behaviour, Planning, and Housing.**

**Laura Mayes**

**Mobile 07855819343**

**Email: [laura.mayes@wiltshire.gov.uk](mailto:laura.mayes@wiltshire.gov.uk)**



# **Christmas Tree Festival**

**16th Dec - 5th Jan**

**St Nicholas Church**

**Daily 10.00 - 16.00**

**Refreshments**

**Raffle**



# RBL Bromham Branch 1922-2022

Welcome to the latest insight from Bromham Veterans.

Hopefully readers of this latest update from Bromham Veterans have enjoyed the late unseasonal warm weather and are now getting ready for the festive season. Looking ahead, we have Remembrance Sunday Service and the monthly 3<sup>rd</sup> Wednesday Social at the Greyhound. In the New Year, we will be having our annual Veterans Lunch; a big thanks to the Greyhound for hosting us. If you would like to attend, please contact Julian, Neil or email us at the contact details below.

RBL Veterans will be putting up a Christmas Tree in the Church for this year's Bromham Christmas Tree Festival, so please come and view this.

We will be having an earlier Quarterly Meeting in December so that we can focus our priorities on looking forward to the Festive Season with our families and friends. The Meeting will take place in the Bromham Clubhouse at 7:30pm on Wednesday 6 December, followed by an equally early Veterans' Social in The Greyhound afterwards. We look forward to seeing you there.

Next year, we will be planning day trips and it has been suggested the odd 'ramble' up a hill or two or three ... This is something that we could look at doing when the weather picks up in spring / summer.

## Upcoming Calendar of events

Sunday 12<sup>th</sup> November 2023 – Remembrance Sunday Service at the Church, followed by laying up of wreaths at the memorial. 15:00hrs

Wednesday 15<sup>th</sup> November 2023 – Veterans 3<sup>rd</sup> Wednesday Social at The Greyhound – 19:30hrs

Wednesday 6<sup>th</sup> December 2023 – RBL Quarterly Meeting & Veterans (early) 3<sup>rd</sup> Wednesday Social at the Greyhound – 19:30hrs

Saturday 16<sup>th</sup> December - Bromham Christmas Tree Festival begins in St Nicholas' Church

Wednesday 17<sup>th</sup> January 2024 – Veterans 3<sup>rd</sup> Wednesday Social at The Greyhound – 19:30hrs

February 2024 – Veterans Lunch at the Greyhound – Timings and date to be confirmed?

Please let us know if you would be prepared to help in whatever way you can by emailing us at [bromhamveterans@gmail.com](mailto:bromhamveterans@gmail.com)

Whatever support you can give will be most welcome.

Saturday 25th November  
at 7pm  
St Nicholas Church Bromham

**Bromham**  
**Bash**

An evening of  
Fun,  
Food  
&  
Entertainment

£5  
pay at the  
door

Raffle

Tea and squash provided but please  
bring your own wine

Saturday 24th Dec



Crib Service

Meet at 4pm

in the

Greyhound garden

And from there to the Blind  
House

To re-enact the Nativity  
story with live animals

Afterwards: Mulled wine and mince pies



## Tote on Tour competition

Villagers are definitely seeing the world and taking their tote bags with them. The latest photos are from as far afield as Abu Simdel, Egypt; Jabal Akhbar, Oman; Norway; the Black Sea beaches of Bulgaria; as well as Greece and various other destinations in the Mediterranean.

The current leaders are still Rachel and Paul Mortimer who took their tote to Disney's Magic Kingdom Florida, 4275 miles from Bromham. We hear that visits are planned to Australia and New Zealand before Christmas - hopefully you remember to take your totes!

There are still a few totes left to buy from any of the Carnival Committee or from The Patchwork Rabbit. Remember the deadline for entries is Christmas 2023







The Pudding Run Team would like to give advanced information for the annual 10-kilometre race on Sunday 3rd December 2023.

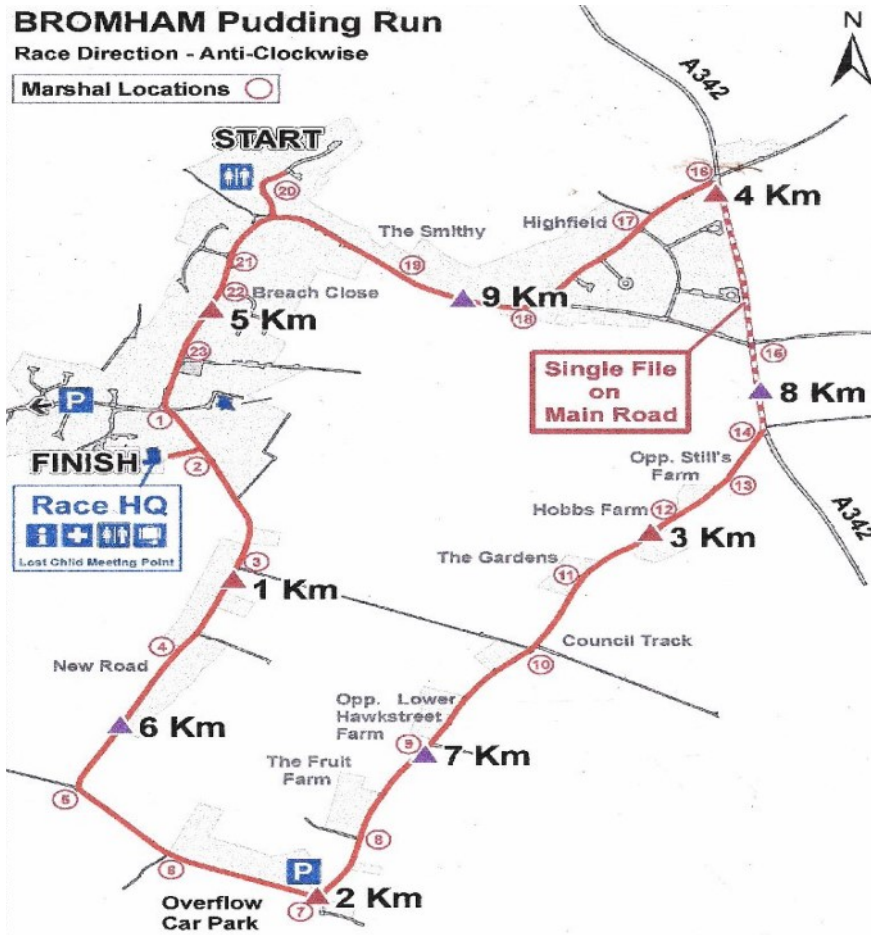
The race starts from Greystones at 11:00am and completes a circular route twice around the village. The route travels along the High Street, onto New Road, onto Hawkstreet, onto the A342 Devizes Road, onto Highfield, onto the Pound, onto Horsepool and back onto the High Street with the race ending at the Social Centre car park following completion of the second lap.

As always, we would like to thank you for your patience, and we hope to minimise disruption but would like to apologise in advance for any inconvenience caused. If you are able to avoid parking on the route and in particular on the High Street or driving around the village between 11.00 am and 12.30 pm it would be greatly appreciated.

## BROMHAM Pudding Run

Race Direction - Anti-Clockwise

Marshal Locations ○



Please come out and support the event and cheer the runners on, this helps both the runners and volunteers.

As we did last year, we plan to use the Social Centre car park and the Jubilee Field for runners registration, so please can we ask you to spread out around the course and avoid the most congested areas such as the start and finish.

Please can we also ask for people to avoid overnight parking in the Social Centre car park the night before the race as setting up will be earlier than normal due to the above facilities being set up.

The race is the biggest fund raiser for our wonderful school with all proceeds going to St Nicholas School

If you would like to **help out** on the day or wish to **sponsor** this fantastic fundraising event, then please email the team at: [puddingrun@live.com](mailto:puddingrun@live.com)

See you on the day!

Best wishes the Pudding Run Event Team



## Do you know about the Seend Shuttle?

On Tuesday mornings it runs to Bromham and Melksham and on Thursday it 'shuttles' between all parts of Seend and Devizes and Bromham. Even if you have your own transport, try using the Shuttle now and then to avoid the hassle of parking and enjoy travelling among friends. Those over-60s who are in possession of a bus pass can use it on the scheduled services.

### Tuesday service (Melksham via Bromham)

Location	Time	Location	Time
Barge Inn	09:10	Minty's Top	09:28
Seend Cleeve, The Stocks	09:12	Angell House	09:38
Bell Inn	09:14	Melksham Town Centre	09:40
Seend, The Lye	09:16	Asda (arrive)	09:45
Three Magpies	09:20	Asda (depart)	10:45
Durlett/New Road	09:24	Town Centre	10:48
New Road Social Club car park	09:26		
Return journey as required to set down passengers			

### Thursday service:

Location	Time	Location	Time
Sells Green	09:00	Devizes, Market Place	10:50
Seend Cleeve, Pelch Lane	09:05	Sells Green, Bath Road	11:00
Seend, The Bell	09:10	Seend Cleeve, Pelch Lane	11:05
Seend, The Lye	09:12	Seend, The Bell	11:10
Devizes, Market Place	09:24	Seend, The Lye	11:12
Devizes, Morrisons (arrive)	09:29	Devizes, Market Place	11:24
Devizes, Morrisons (depart)	09:39	Devizes, Morrisons (arrive)	11:29
Devizes, Market Place	09:44	Devizes, Morrisons (depart)	11:39
Sells Green, Bath Road	09:54	Devizes, Market Place	11:44
Hawkstreet	09:58	Sells Green, Bath Road	11:54
Bromham, New Road	10:04	Hawkstreet	11:58
Bromham, Angell House	10:14	Bromham, New Road	12:04
Devizes, Market Place	10:29	Bromham, Angell House	12:14
Devizes, Morrisons (arrive)	10:34	Seend Cleeve, Barge Inn	12:30
Devizes, Morrisons (depart)	10:45		

When the bus is not required for scheduled services, it is available for private hire. The cost to hire (inclusive of VAT) is 90p per mile with a reduction to 66p for miles over 200 and with a minimum charge of £13.80. This includes fuel but you are usually expected to find your own driver who has to be approved and accepted on to our list of insured drivers. The bus has seats for sixteen passengers plus driver.

The credit for all of this lies mainly with those people who give their time voluntarily to organize the finances and bookings, keep the bus road worthy and volunteer to drive. As with most voluntary organisations there is always work to be done and not enough people to do it! So, if you are a driver with a D1 on your licence we would welcome you into the fold, even if you are only occasionally available.

Further information can be found on the Seend website [www.seend.org.uk/seend\\_shuttle.shtml](http://www.seend.org.uk/seend_shuttle.shtml) or email them at [seendshuttle@gmail.com](mailto:seendshuttle@gmail.com). You can also ring Alison Cobbing on 07951 030491 to enquire further about timetables, etc.

## Notes from the Belfry

On Saturday September 9th, one of the hottest days of the year, six of us gathered to ring a quarter peal to celebrate the silver wedding anniversary of Danny and Tara Adams.

A quarter peal involves ringing 1260 changes without a break, which on our bells takes 45 minutes. Even with the door and windows open and two fans going it was warm work. Despite the conditions we were successful and we celebrated afterwards by opening a bottle of chilled fizz and toasting the happy couple.

A full peal consists of 5040 changes. An odd number you would think but its origin goes back 300 years when English change ringing was evolving. Ringers had been trying to find ways of ringing the maximum number of different permutations possible on seven bells which they called a full peal. They finally achieved their goal and the first full peal was rung on May 2nd 1715 at St Peter Mancroft Church in Norwich. As this is beyond most of us we tend to make a quarter peal the standard performance for celebratory ringing.

Maybe you have a special occasion you would like us to ring the bells for. We would be happy to arrange this for you and hope that your special event doesn't occur in a heat wave!

Linda Drummond-Harris



LIMITED EDITION

# BROMHAM TEA TOWEL

To raise funds for  
Bromham Community Hub

THE PERFECT  
CHRISTMAS GIFT  
**NOW ONLY**  
**£7.50 each**

Available to buy from  
The Clubhouse Café  
Thurs & Fri 10.30 - 1.30pm  
&  
Melksham Tourist  
Information Centre



A limited edition tea towel focussing on some of Bromham's most historic and iconic architecture.

## How to Order...

To place an order contact Rachel Prichard via email [rachel.prichard@btinternet.com](mailto:rachel.prichard@btinternet.com) or text **07759 009507**  
State your name, number of tea towels required, address and contact details.  
Payment will be due on delivery of order via cash or cheque.



**BUSY KIDS NURSERY**  
Bromham, Wiltshire

01380 859389 [busykidsbromham@outlook.com](mailto:busykidsbromham@outlook.com)

**Busy Kids Nursery is a thriving rural setting where children are encouraged to gain independence, confidence and positive values.**

**We have wonderful outdoor facilities and are open 50 weeks each year.**

**We cater for babies, toddlers and Pre-school children but also offer – Breakfast, After-school and Holiday clubs.**

**We currently have spaces available.**

**If you are interested, please email or phone us on the above contact details, we look forward to hearing from you.**

**The Busy Kids Team.**

**GU**  
GRAND UNION  
FINANCIAL

**Lee Short**  
Finance & Insurance Consultant

07359 290 017  
[lee.short@grandunionfinancial.co.uk](mailto:lee.short@grandunionfinancial.co.uk)

- Finance**
  - Residential Mortgages
  - First Time Buyer Mortgages
  - Buy to Let Mortgages
  - Commercial Mortgages
  - Lifetime Mortgage
  - Bridging Finance
  - Development Finance
  - Invoice Financing
  - Luxury Asset Finance
  - Renewable Energy Finance

- Insurance**
  - Life & Critical Illness Protection
  - Personal Income Protection
  - Buildings & Contents

- Wills & Power of Attorney**

**GU**  
GRAND UNION  
FINANCIAL



[www.grandunionfinancial.co.uk](http://www.grandunionfinancial.co.uk)

# BROMHAM CIDER FARM

Shed Cider - Winner of Best Cider in Show at The Royal Cornwall Show, June 2023



## Christmas Gift suggestions

All made here at our orchard:

- Gift Packs of Bottled Craft Cider
- Blossom Honey, Cider Apple Vinegar and Real Wiltshire Apple Juice
- Organised Orchard Tours with Cider Tasting
- Bag in Box Farmhouse Cider - popular for parties!
- Gift Vouchers (*minimum value £20*)

### Contact Details:

Roger Blake on: 07968 115640

[roger@shedcider.com](mailto:roger@shedcider.com)

[www.shedcider.com](http://www.shedcider.com)

**Bromham Cider Farm 184 St Edith's Marsh, Bromham, SN15 2DJ**



## HANDY VAN + MAN



For collections, deliveries or tip runs in Wiltshire and the surrounding areas.



Contact Andrew  
Mobile: 07990 665572

DBS Checked

WRC License Holder





# APT GROUP SERVICES



Your paragraph text

## Building and Designing your dream space

Innovative Property Development, Construction and Maintenance

**We provide Electrical and Building services to the Commercial and Domestic Market. Our friendly and professional team provide an outstanding service to all of our clients.**

EV CHARGER POINT INSTALLER   ELECTRICAL SERVICES   BUILDING WORKS   GARDEN DESIGN AND LIGHTING   LIGHTING DESIGN   HOME RENOVATIONS   SMART HOME TECHNOLOGY   KITCHEN RENOVATIONS   SECURITY SOLUTIONS



01380 711 781

[aptgroupservicesltd.co.uk](http://aptgroupservicesltd.co.uk)



Call Craig: 07375 860089

Email: tanktransformer@gmail.com

25  
years  
experience  
of  
freshwater &  
tropical fish

## TANK TRANSFORMER

ARE YOU IN NEED OF  
ASSISTANCE MAINTAINING  
YOUR POND OR AQUARIUM?

- Glass/Acrylic clean inside & out •
  - 20-30% water change •
  - New tank set-up •
  - Full clean & reset •
  - Gravel/Sand filtration •
  - Move or remove aquarium •
- Pond and filter cleaning also available •

## Occasion Cakes & Cupcakes



Bromham, Wiltshire



[cakesbycerys.co.uk](http://cakesbycerys.co.uk)



07710 199513



[cakesbycerys.enquires@gmail.com](mailto:cakesbycerys.enquires@gmail.com)



### Bromham Post Office

The Clubhouse, Social Centre Car Park

#### Opening times:

Monday 13.30 - 15.30

Wednesday 9.00 - 11.00

*Safeguard yours and your  
family's future today*



**RMD & Associates**

— WILLS & LASTING POWER OF ATTORNEY SPECIALISTS —

**Rudi Dalby**  
07791879774

[www.rmdandassociates.com](http://www.rmdandassociates.com)



# BOYD WILSON DESIGN

## DECORATING + DESIGN STUDIO



Interior Painting  
Color Consulting  
Faux finishing + Murals  
Interior Design  
Art + Decor + Furnishings  
Architectural Drawings + Design  
Landscape Design Concepts  
Small + Large Jobs

**MAGDALEN BOYD-WILSON**  
DECORATOR  
INTERIOR DESIGNER  
FINE ARTIST



WWW.BOYDWILSONDESIGN.COM TEL: 07833 863 998 MBOYDWILSON@GMAIL.COM

## ACTIVE PLUMBING SUPPLIES



-  Plumbing & Heating Supplies
-  Boilers
-  Radiators
-  Solar Panels & other Green Technologies
-  Water Softeners & Salt



1 Stanier Road | Porte Marsh | Calne | SN11 9PX  
[www.plumbingsuppliescalne.co.uk](http://www.plumbingsuppliescalne.co.uk)

**01249 818811**

Open: Mon - Friday 7.30am - 5pm & Sat 8am - 12pm

## ACTIVE KITCHENS | BATHROOMS DOMESTIC APPLIANCES

-  Bathrooms, Wet Rooms & Shower Rooms
-  Bespoke Kitchens
-  Granite, Silestone & Laminate Worktops
-  Washing Machines and Dishwashers
-  Kitchen Appliances, Integrated or Freestanding



**01249 813871**

Open: Mon - Friday 8am - 5pm & Sat 8am - 2pm



# AUDI VW CENTRE

## B R O M H A M

We are now taking bookings for MOT's at our custom built new workshop located in Bromham.

All brands & models catered for.

Please call **01380 850300**  
or visit  
[www.audivwcentre.com](http://www.audivwcentre.com)



Established 1984

# Chris Caravan Services

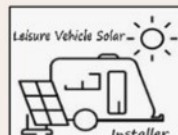
Your Local Mobile Caravan & Motorhome Habitation Service Engineer



# 07849-267589



[chriscaravanservices@gmail.com](mailto:chriscaravanservices@gmail.com)





We are an independent, award winning, family run funeral directors and natural burial ground owners, led by Aaron and Jonathon Bewley

- Available 24-hours
- Bespoke and tailored services inc eco friendly options
- Electric Tesla Limousines
- Pre-paid funeral plans



Leafy Lane Natural Burial Woods is the ideal choice for those seeking somewhere elemental and beautiful to have a funeral and remember a loved one. Contact us for more information on burial and ashes plots and memorial trees.

ENQUIRIES@AJBFUNERALS.CO.UK  
WWW.AJBFUNERALS.CO.UK

HELLO@LEAFYLANEWOODS.CO.UK  
WWW.LEAFYLANEWOODS.CO.UK



57A PICKWICK ROAD  
CORSHAM  
WILTSHIRE  
SN13 9BS

T. 01249 713 134

26A CHURCH STREET  
MELKSHAM  
WILTSHIRE  
SN12 6LS

T. 01225 708 736

3B NEW ROAD  
CHIPPENHAM  
WILTSHIRE  
SN15 1EJ

T. 01249 660 554

LEAFY LANE WOODS  
LEAFY LANE  
CORSHAM  
SN13 0LD

T. 01249 713134



# OLIVER'S ELECTRICAL Ltd

YOUR LOCAL ELECTRICIAN

Fully Qualified Electrician

Over 15 years experience

Based on The Pound in Bromham

Call Ashley Oliver - 07946 588817



## The Smithy Clinic

The Old Smithy, 1, The Pound, Bromham, SN15 2HE

### PHYSIOTHERAPY

Relieve pain and restore function through Physiotherapy.

**We are able to treat:**

Sports injuries

Musculoskeletal

Neurological

and a range of other conditions

**Other Therapies available:**

Acupuncture

Homeopathy

Podiatry

Sports and Remedial Massage

**Phone: 01380 850595**

**Email: [reception@smithyclinic.co.uk](mailto:reception@smithyclinic.co.uk)**

**Website: [www.smithyclinic.co.uk](http://www.smithyclinic.co.uk)**

**Opening Hours:**

**Monday – Friday 9 a.m. to 5 p.m.**

*Occasional clinics on Saturday mornings  
- please telephone for details*

**Online booking now available via our website**



# THE GREYHOUND

*Country pub with restaurant in the heart of Bromham*



## NOW TAKING FESTIVE BOOKINGS!

Planning a family get-together, a company Christmas party or maybe a lunch or dinner with friends? Book now for our delicious 2 or 3 course festive menu, available Monday to Saturday from Thurs 23rd November - Sat 23rd December.

*(Excluding Sundays, Christmas Eve & Christmas Day)*

**2 Courses £ 29.95 | 3 Courses £ 35.95**

*(Children's menu also available)*

**OPEN:** Mon & Tue: 12pm - 9.30pm, Weds & Thurs: 12pm - 10pm, Fri & Sat: 12pm - 10.30pm, Sun: 12pm - 4.30pm

**High St, Bromham, Wiltshire SN15 2HA**  
**01380 850241 | [thegreyhoundbromham.co.uk](http://thegreyhoundbromham.co.uk)**



# 11th Hour Escape Rooms

Can you escape a locked room in 60 minutes?

Find clues, solve puzzles and locate keys!

We have 2 wonderful themed & immersive rooms to choose from



Victoria's Last Challenge - Escape the attic with your inheritance    Criminal Record - A murder mystery/whodunnit escape room



## Find us

Offices above Audi Sales Centre,  
91 Devizes Road, Bromham, Chippenham,  
Wiltshire, SN15 2DZ.

01380 609608

Enquiries@11thHourEscapeRooms.co.uk

[www.11thHourEscapeRooms.co.uk](http://www.11thHourEscapeRooms.co.uk)



## Esther Smith Massage



Swedish / Relaxation  
Sports & Remedial

Deep Tissue & Trigger Point  
Pregnancy Massage



The Gardens, Bromham  
07815 424501

[contact@esthersmithmassage.co.uk](mailto:contact@esthersmithmassage.co.uk)



## Baby Massage Classes

Baby massage is a wonderful, soothing therapy that calms your baby, creates bonding time and promotes healthy development

Small intimate groups for individual attention and ongoing support

4 week course of 1 hour sessions  
Suitable for babies 6 weeks to pre-mobile



The Gardens, Bromham  
07815 424501

[contact@esthersmithmassage.co.uk](mailto:contact@esthersmithmassage.co.uk)





# Cathy's Yoga classes



## WELL WOMAN YOGA

*Open to women of all ages*

Tuesdays 9.30am-10.45am at Rowdefield Education Centre

Wednesdays 7.30pm-8.45pm at White Horse Yoga Centre, Devizes

## MUM & BABY YOGA

*From 8 weeks after birth*

Tuesdays 11.00am-12.15pm at Rowdefield Education Centre

## PREGNANCY YOGA

Wednesdays 6.00pm-7.15pm at White Horse Yoga (Devizes)

*From 12 weeks of pregnancy onwards*

## CHAIR YOGA (online via Zoom)

Fridays 11am-12 noon

*Open to all (men and women) – all you need is a chair!*

## WELL WOMAN YOGA (online via Zoom)

Mondays 7.45pm-9.00pm & Fridays 9.15am-10.30am

*Open to women of all ages*

*Gentle yoga practices to promote physical and mental balance and a feeling of calm vitality. Work towards helping to improve circulation, postural alignment, flexibility, muscle tone and balance. Restorative practices and breathing techniques accessed in a safe and supportive environment.*

*No previous yoga experience necessary.*

If you are interested in any of these classes please email Cathy Welch on [cathywelchyoga@gmail.com](mailto:cathywelchyoga@gmail.com) or call/text 07960 330131

Online booking: [www.bookwhen.com/cathysyoga](http://www.bookwhen.com/cathysyoga)

*Website for yoga & homoeopathy: [www.womenswellnesswiltshire.com](http://www.womenswellnesswiltshire.com)*

# GRAY & AMOR LTD.

CARPENTRY & PROPERTY RENOVATION

Covering all aspects of property renovation and maintenance.

View our range of services online or call to discuss your project.

01380 587006 / 01672 596006

info@grayandamor.co.uk www.grayandamor.co.uk



## Beautifully Bespoke Ceremonies

Weddings  
Funerals  
Namings  
Vow Renewals

[www.mwcelebrant.co.uk](http://www.mwcelebrant.co.uk)

Tel : 07919598013



## LISA LAMB YOGA

YOGA CLASSES FOR ALL ABILITIES TO IMPROVE STRENGTH, BALANCE & FLEXIBILITY ALONGSIDE A SENSE OF WELLBEING.

DAY	TIME	LOCATION
WEDNESDAY	10:45am-11:45am	MH Studios, Bromham
FRIDAY	10:45am-11:45am	MH Studios, Bromham

COST £8 PER CLASS  
BOOKING ESSENTIAL

FOR MORE CLASS INFORMATION PLEASE EMAIL

[LISALAMBYOGA@GMAIL.COM](mailto:LISALAMBYOGA@GMAIL.COM)

CALL/TEXT: 07504615556 - FACEBOOK PAGE: LISA LAMB YOGA



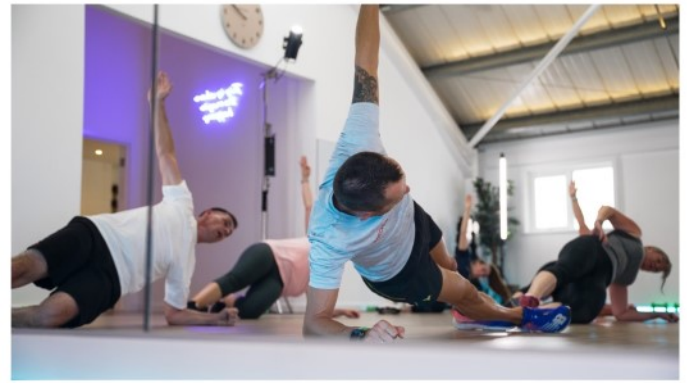


# M | H Studios

- Private Fitness & Wellbeing -  
Luxury, boutique fitness and wellbeing studio nestled in the heart of Bromham, Wiltshire  
[www.mh-studios.co.uk](http://www.mh-studios.co.uk)  
[mel@mhunterpt.com](mailto:mel@mhunterpt.com)



**Group Fitness Classes / Les Mills / 1-1 Private Training / Sports Massage**




*Lead The Way*  
DOG WALKING

Friendly, professional and reliable dog walker based in Bromham.

- Fully insured
- DBS checked
- Pet first aid trained
- 100% animal lover!

Please contact me for more information and to book in a free meet and greet.

07907995022  
[Leanne.ltw@gmail.com](mailto:Leanne.ltw@gmail.com)  
@LeadTheWay




**BEWLEY**  
FUNERAL DIRECTORS

*Our family are here for your family*

Our family have been serving Bromham and the surrounding area since 1970.



- 24hr Personal Service • Home Visits
- Pre-paid Funeral Plans

64 New Park St. Devizes  
01380 728008

15 Bank St. Melksham  
01225 702521

[contact@djbewley.com](mailto:contact@djbewley.com)

[www.bewleyfunerals.com](http://www.bewleyfunerals.com)





# The Farm Cookery School



## WHAT IS COMING UP IN 2024?

### GLOBAL FLAVOURS CLASSES

#### INDIA

- 30th Jan Thali 3: Tikka Massala, Seekh Kebab, Hariyali Curry, Pilau Rice & Chapatti
- 15th Jan Chicken or Vegetable Biryani with Bhajis & Roti
- 1st March Thali 1: Aloo Curry, Dahl, Tikka, Roti, Pickle, Raita & Salad
- 20th Feb & 23rd April Chicken or Vegetable Balti with Samosas & Chapattis

#### THAILAND

- 12th Jan Thai Feast 2: Spring Rolls, Sweet Chilli Sauce, Pad Thai & Tom Yum Soup
- 24th April Thai Feast: Fishcakes, Sweetcorn Fritters, Satay Chicken or Aubergine, Peanut Sauce & Thai Salad
- 7th Feb & 21st May Thai Curries 2: Massaman & Panang Curries with Jasmine Rice

#### MOROCCO

- 2nd Feb Moroccan Feast 2: Tagine, Pastilla, Chermoula, Tabbouleh & Batbouts
- 12th March Moroccan Feast: Batbout, Bessara, Zaalouk, Tabbouleh, Briouats & Keftas

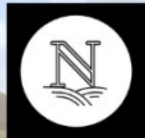
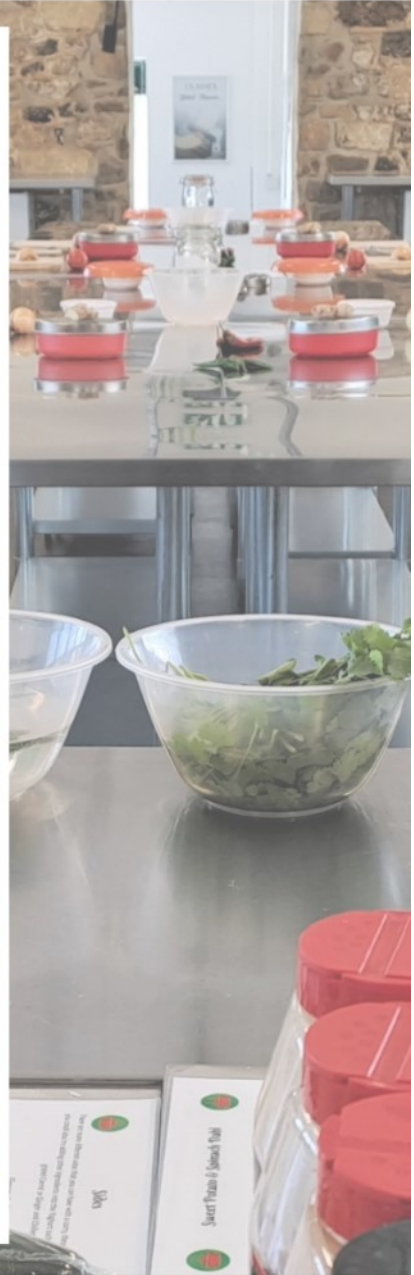
#### ITALY

- 6th March Italian Feast: Gnocchi, Arancini, Parmigiana, Garlic Dough Bites & Ragu
- 9th Feb Italian Feast 2: Pasta - Ravioli & Spaghetti + Pesto, Ragu & Dough Bites
- 27th March Classic Italian : Cannelloni & Tiramisu

#### MEXICO

- 19th April Mexican Feast : Duo of Soft Tacos with Pepper Salad & Mexican Street Corn
- 19th March Essential Mexican: Enchiladas & Margarita Cheesecake
- 3rd Jan **NEW** Mexican Feast 2: Quesdailles, Fajitas, Churros & Chocolate Sauce
- 31st Jan & 30th April Classic Mexican: Aztec Soup with Corn Tortilla Strips & Gorditas de Nata

[www.thefarmcookeryschool.co.uk](http://www.thefarmcookeryschool.co.uk)



## NETHERSTREET BEEF



PREMIUM GALLOWAY BEEF BORN & BRED AT NETHERSTREET FARM, WILTSHIRE

### Order your Beef for Christmas



FREE CLICK & COLLECT SERVICE

[www.netherstreetfarm.co.uk](http://www.netherstreetfarm.co.uk)





The **WESTBROOK** in Bromham

Tel: 01380 850418 [www.westbrookbromham.co.uk](http://www.westbrookbromham.co.uk)

## Christmas Menu 2023

2 courses £32.99 per person • 3 courses £37.99 per person

### STARTERS

**Christmas Spiced Mixed Bromham Squash Velouté (vg available)**

Served with chive crème fraiche and a freshly baked bread roll

**Oak Smoked Salmon Mousse with King Prawns**

Served with delicate leaves & brown bread

**Duck Parfait**

Served with toasted ciabatta and homemade fruit chutney

**Smoked Haddock**

Freshly smoked Haddock, baked with leeks, cream & white wine, then topped with a Parmesan crust, served with toasted ciabatta

**Creamy Garlic & Tarragon Mushrooms (vg)**

Button mushrooms, sauteed with fresh garlic and baked with a creamy tarragon sauce made with oat milk, served with toasted ciabatta

**Baked Camembert (v)**

Baked Camembert, served with toasted ciabatta with cranberry, orange & port sauce

### MAIN COURSE

**Traditional Roast Turkey Breast**

Served with smoked bacon wrapped chipolata, pork, sage & onion stuffing & homemade port, orange & cranberry sauce

**28 Day Aged Fillet Steak**

28 day dry aged 6oz Fillet steak, served on one of our fantastic steak stones with a red wine & pancetta sauce & chunky chips

**Venison and Cranberry Pie**

Short-crust pastry diced venison pie in a rich cranberry gravy

**Fillet of Sea Bass**

Served with light white wine and dill sauce

**Cod Fillet**

Served with a warm lemon, King Prawn butter sauce

**Rack of Lamb**

Roasted French trimmed rack of Lamb served pink with a minted redcurrant gravy

**Christingle Pie (v)**

Roast parsnip, cheddar, leek & chestnut pie, served with a rich vegetable gravy

**Christmas Wellington (vg)**

Chestnut mushroom, puy lentil & sun blushed tomato encased in puff pastry & served with a rich vegetable jus

**Fig & Cranberry Nut Roast (vg)**

Served with vegetarian gravy

**\* All will be served with a selection of locally grown seasonal vegetables, roast and new potatoes, unless stated otherwise\***

### DESSERTS

**West Country Christmas Pudding (vg available)**

West Country recipe, brandy, cider, spices and loads of fruit! Served with brandy sauce

**Christmas Ice-cream Sundae**

Christmas pudding pieces, brandy & clotted cream ice-cream, brandy sauce, brandy snap & topped with whipped cream

**Baked Christmas Cheesecake (vg available)**

Rich vanilla cheesecake topped with raspberries & blackberries & glazed with mulled wine, then smothered in cream

**Warm Chocolate Fudge Cake (vg available)**

Served with vanilla ice-cream

**Apple Crumble (vg available)**

With sultanas and cinnamon served with lashings of custard

**Festive Crème Brulee**

Orange, lemon & cinnamon crème brulee, served with homemade shortbread

**Cheese and Biscuits**

Green's of Glastonbury Twanger Cheddar, Camembert, Long Clawson Stilton, served with grapes and fruit chutney

## How to book your meal

Our Dining area will be festively decorated from the end of November.

Please telephone first to confirm availability of your required date and make a provisional booking, then complete the appropriate booking form and return at least 10 days before your party date.

A non-refundable deposit of £10 per person for the Christmas Menu and £50 per person for the Christmas Day Menu, is required 7 days after the booking is made, this will secure your booking and be deducted from your final bill.





## Your first step to healthy feet

Feet First Foot Care Services is a foot care clinic that offers services throughout Melksham and surrounding villages. We treat common foot conditions: corns, hard skin, ingrown nails, diabetic feet, verruca, athletes foot, fungal infections and more.

**Call us to book an appointment**

**01225 405 168**

6b Littlebrook Courtyard, Bath Road, Melksham, Wiltshire SN12 6LP

Email: [info@feetfirstfootcareservices.co.uk](mailto:info@feetfirstfootcareservices.co.uk)

[www.feetfirstfootcareservices.co.uk](http://www.feetfirstfootcareservices.co.uk)



## WILTSHIRE CERAMIC STUDIO

*Your local clay makers' space*

Parties ♦ Date Nights ♦ Lessons

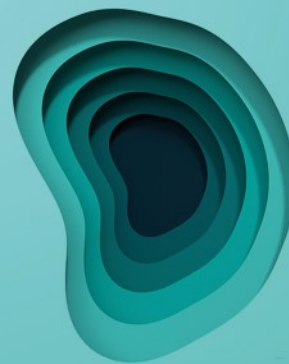
Winter Pottery Workshops



WILTSHIRECERAMICSTUDIO.CO.UK

Stockham Marsh Farm, Foxham

☎ 07543388124



TYMPAHEALTH

Hearing loss?  
Ear ache?  
Blocked ears?

It could just be *wax*

We can help with that & more...  
Book a 30 minute ear & hearing health check-up today

- \* Ear health examination
- \* Safe, best practice ear wax removal using micro suction
- \* Certified hearing screening test

**Call us to book an appointment**

**01225 405 168**





# Moors Wood Farm Christmas Trees

**GROWN IN THE HEART OF BROMHAM!**

**SUSTAINABLE HOME GROWN CHRISTMAS TREES ON  
YOUR DOORSTEP!**

**NORDMAN FIR, HIGHLY NEEDLE RETENTIVE, NO MESS!**

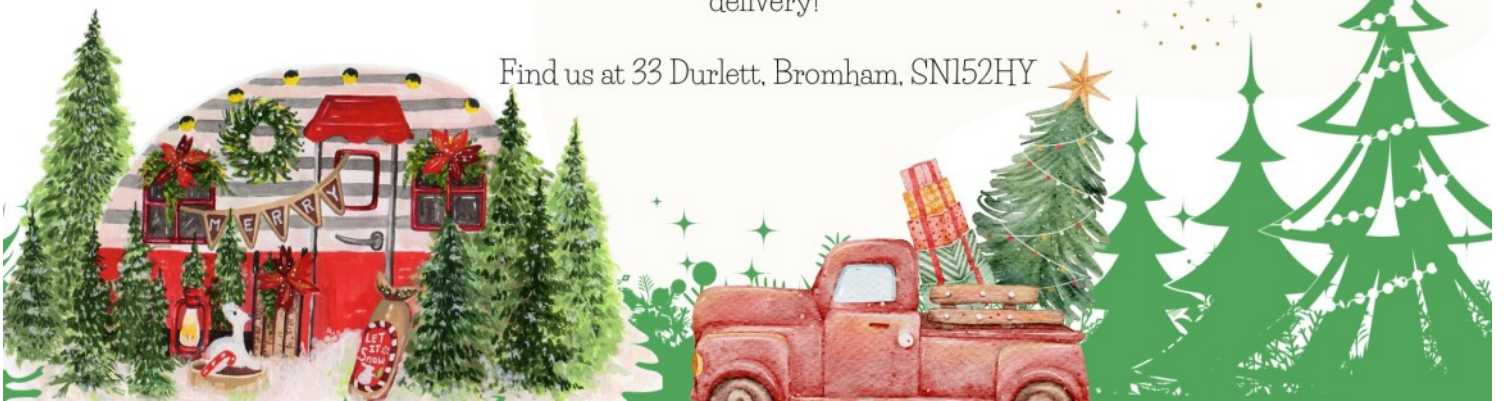
Come and mark your tree in advance and put down a  
deposit ready for Christmas!

Call us on: 07809425670 and arrange collection or  
delivery!

Find us at 33 Duretlet, Bromham, SN152HY

Choose your  
own tree still in  
the ground!

Hand-made  
wreaths and  
decorations  
available to go with  
your tree!



## LS architectural design

Thinking of extending, converting or replacing  
your existing home?

— With over 25 years residential design experience  
in the Wiltshire area, we offer professional  
architectural services at affordable prices.

Call or email today for a free, no obligation,  
consultation:

☎ 07768 808268

✉ [lsarchitecturaldesign@outlook.com](mailto:lsarchitecturaldesign@outlook.com)

For more information on our services and projects  
or to read what our past and present clients think  
of us, please look us up via our website:

🏠 [www.lsarchitecturaldesign.co.uk](http://www.lsarchitecturaldesign.co.uk)





10% OFF ALL WINTER SERVICING  
UNTIL 31st JANUARY 2024!

# MAX MOWERS

SALES • SERVICING • REPAIRS  
ALL TYPES OF GARDEN MACHINERY

## STANDARD SERVICE PRICE LIST

ROTARY MOWER	£70.00
SMALL RIDE-ON	£150.00
LARGE RIDE-ON	£200.00
STRIMMER/BRUSH-CUTTER	£60.00
BLOWER/VAC	£60.00
CHAINSAW/HEDGE CUTTER	£70.00

PRICES ABOVE DO NOT INCLUDE REPLACEMENT PARTS OR REPAIRS

# 07947112194

MAXMOWERS2012@GMAIL.COM

# ANGELL MOTORS

CAR REPAIRS & SERVICING

## FIXED PRICE SERVICING

- All Makes & Models
- M.O.T. Service
- Diagnostics
- Brakes & Clutches
- Welding & Repairs
- Air Conditioning Repairs
- Volvo Trained Technician
- Towbars Fitted
- Local Collection/Delivery

TELEPHONE: 01225 707140

Email: [angellmotors@sky.com](mailto:angellmotors@sky.com) • [www.angellmotors.co.uk](http://www.angellmotors.co.uk)

Unit 4 Strattons Walk, High Street,  
Melksham SN12 6JL (rear of Poundstretcher)



## LAURA MAYES

### YOUR WILTSHIRE COUNCILLOR FOR BROMHAM

**Please contact me if you have any Council issues including:**

- **Planning**
- **Housing**
- **Education, Children's Safeguarding**
- **Highways – potholes, road schemes, speeding**
- **Fly tipping and waste**
- **Adult Social Care**



**I am here to offer advice and support so please get in touch:**

**Email:** [Laura.Mayes@wiltshire.gov.uk](mailto:Laura.Mayes@wiltshire.gov.uk)

**Tel:** 07855 819343

**Facebook:** Laura Mayes – for Bromham, Rowde and Roundway



# STONEHEATH

FITNESS & THERAPY

Personal Training 1:1, 2:1  
& Group Sessions  
Fitness Classes, Online Plans  
& Coaching  
Sports, Deep Tissue  
& Pregnancy Massage



Located in Bromham

07870133317

[www.stoneheathfitnessandtherapy.com](http://www.stoneheathfitnessandtherapy.com)

# DEEP BLUE

**Pool Management Ltd**

**Swimming Pools**

**Hot Tubs**

**Chemicals**

**Pool Toys & Inflatables**

**Hot Tub Service & Repair**

**Pool Maintenance**

**Sauna & Steam**



Tel 01380 721314

[www.deepbluepoolsandspas.co.uk](http://www.deepbluepoolsandspas.co.uk)



## WAYSIDE LODGES and B&B

Self catering accommodation

Bed and Breakfast plus room only

Short or long term guests catered for

Cosy, modern accommodation

Direct access to private woodland

Flexible bookings – family or business welcome

Tel 07770 774463 or [mail@jandlseed.co.uk](mailto:mail@jandlseed.co.uk)



## The Five Elements Retreats

Based in Bromham on New Road

Offers you a way to relax the mind and body,  
in a natural non-invasive way.

Reiki and Animal Reiki

Reiki Drum healing and / or Journey

Ear Candles

Hand Reflexology

Chakra balancing

Oracle card readings

Sound Healing

Reiki training available for all levels

Bespoke healing experiences  
and Wellness Days

Contact Trudi on 07810 – 374053

Email: [Trudis36@gmail.com](mailto:Trudis36@gmail.com)

[www.thefiveelementsretreats.co.uk](http://www.thefiveelementsretreats.co.uk)



## Change and Wellbeing Therapy

cognitive behavioural therapy - hypnotherapy  
relaxation - mindfulness - stress management

Face to face appointments now available at:  
The Therapy Rooms, 32 New Road,  
Chippenham, and in Bromham

anxiety - stress - phobias - chronic pain -  
habits - poor sleep

life goals: career - personal life - sports

Call for a chat, or email:

t: 07702 113544

e: [heather@northwessextherapies.com](mailto:heather@northwessextherapies.com)

w: [www.northwessextherapies.com](http://www.northwessextherapies.com)

## “Don’t shiver, We deliver” Seasoned hard wood logs



Call James

01380 850312 or 07970 781828

Most tree work undertaken

## GARRY LOTT PAINTER AND DECORATOR



30 YEARS EXPERIENCE  
LOCAL TRADESMAN

FOR FREE ESTIMATES CALL  
07971 450058



# WILTSHIRE DIGITAL

Aerials, Satellite, CCTV, WIFI & more...

With over 15 years combined experience we are fully insured installers of Aerials, Satellites, CCTV, WiFi range access points and much more across the whole of Wiltshire and beyond.



For a free quote contact your local experts  
 Phone: 01249 848747  
 Email: info@wiltshiredigital.com  
 Website: www.wiltshiredigital.com  
 Facebook: Wiltshire Digital



## Are you frustrated by today's digital world? ...



Kathryn Price  
 07427 104249

kathryn@ksptechcare.co.uk  
 www.ksptechcare.co.uk



**You're suffering from 'Gadgetitis'**  
**Stop struggling alone!**  
**Call me and I'll get you comfortable and confident with your tech**

## LAZY ACRE

HOLIDAY LET

DEN & CATH FILLIS

LAZY ACRE  
 THE COMMON, BROMHAM  
 CHIPPENHAM  
 SN15 2JJ

01380 850473  
 d.t.fillis@hotmail.co.uk

**SELF CONTAINED UNIT COMPRISING: LARGE BEDROOM WITH EN-SUITE BATHROOM PLUS SEPARATE WC, KITCHEN, LARGE LIVING/DINING AREA WITH TRUCKLE BED. COMFORTABLY SLEEPS 4. ALSO SUITABLE FOR WORKMEN WORKING IN THE AREA. COVERED PATIO AREA. AMPLE PARKING.**



Service covers all aspects of chimney care from regular maintenance to sweeping, camera inspections and testing.

## SOOTY & SWEEP

Service Open Fires, Wood Burners, Multi Fuel Stoves and AGAs. Can deal with specific problems such as birds nest removal and cowl fitting.

Competitive rates and a friendly professional service.

Call Will on: 07789 007418

Or email: william-newell@hotmail.com

## Happy Paws Dog Walking and Pet Care Services

**CARE FOR ANY & ALL PETS!**

We offer dog walks, pet visits and taxi services. Based in Bromham and cover surrounding local areas. Fully insured, DBS approved & accredited with The Professional Dog Walkers Association.

We are experienced with both domestic & exotic pets from big to small!

Please contact us with any questions or to schedule a meet and greet!



Emily: 07940 070206 / Suzie: 07568559556  
 happypawsdogwalkingandpetcareservices@outlook.com

@happypawsdogwalkingandpetcareservices  
 @happypawsdogwalkingandpetcare  
 www.happypawsdogwalkingandpetcareservices.com

## Amanda Phillips Local Mobile Hairdresser

Cut & blow dry - £28  
 Gent's cut - £15  
 Colours from £35 inc. cut  
 Hi lights from £35  
 Perms - all inclusive £48



Phone for quote 07889 744727  
 amandapagethairdesign@hotmail.com

# ILES & VINCENT FUNERAL SERVICES

## BROMHAM'S RESIDENT INDEPENDENT FUNERAL DIRECTOR



Classic and traditional funeral ceremony, small and intimate service or no service at all with a direct cremation, we are here to help, guide and support you every step of the way with sensitivity, experience and empathy.

24 hour professional & caring service

The Cornmarket, Warminster, BA12 9BX  
**01985 220161 (24 hours)**  
info@ilesandvincentfuneralservices.co.uk



FOREVER



**ECO-  
FRIENDLY  
ALOE VERA  
PRODUCTS**

Drink it,  
apply it, rub  
it in - aloe  
for all!

From your local friendly Forever Business Owner  
Caroline Palmer - 07753 677432 - [caro@aloe-aloe.org.uk](mailto:caro@aloe-aloe.org.uk)

**\*FREE delivery for local customers\***

## Beautiful Handmade Curtains, Blinds and Soft Furnishings

Free measuring and quotations  
Wide variety of pattern books to browse at  
Rowde workshop



Caroline Flack 07982 985 925  
carolineaflack@gmail.com  
Marsh Lane, Rowde SN10 5FA



**Paul McNeill – Local Painter and Decorator**

Professional and Reliable  
Qualified and Insured with 20 + years experience

Tel: 07805500185

Email: [pm.painting@outlook.com](mailto:pm.painting@outlook.com)



KDS JOINERY

Enquiries/quotes email:

[kdsjoinery@gmail.com](mailto:kdsjoinery@gmail.com)

Facebook: KDS joinery

Instagram: [kds.joinery](https://www.instagram.com/kds.joinery)



**Scan here to view previous work**



**kyle smith**  
joiner/carpenter

Services offered: Bespoke Joinery - General  
Carpentry - Kitchen/Bedroom installation -  
Feature wall panelling - Hardwood worktop  
installation



# BIKED

WILTSHIRE

- ⚙️ Bike repair, servicing and maintenance based in Bromham.
- ⚙️ No job too big or too small!
- ⚙️ Experienced and honest.
- ⚙️ Qualified Cytech and Shimano mechanic.
- ⚙️ Drop-off or collect and return your bike.



0738 587 9831 | [www.biked.me](http://www.biked.me)

## AB Painting & Decorating Services

- Internal and External
- Qualified and Insured
- Free Quotations
- Professional finish and dust free sanding

**Adrian Bolwell**

**Tel: 01380 850080**

**Mobile: 07962 590710**

**3 Church Hill, Bromham**

## Barlow Bookkeeping

Over 35 years' experience in the industry

**Please contact me or visit my website  
if you require any assistance**

Tel 07917 410081

[ashley@ashleybarlow.co.uk](mailto:ashley@ashleybarlow.co.uk)

[www.barlowbookkeeping.co.uk](http://www.barlowbookkeeping.co.uk)



## PIANO and CELLO Tuition

**Christine Moore**

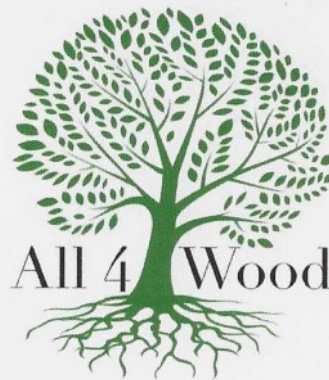
**Experienced teacher - Beginners to Grade 8**

Living in Bromham

For more information please contact

**Tel: 01380 859384**

**email: [cellorunner4@gmail.com](mailto:cellorunner4@gmail.com)**



**Tree Services**

**07785 960379**

- ◇ Felling
- ◇ Total Removal
- ◇ Aerial Work
- ◇ Pollarding
- ◇ Crowning
- ◇ Stump Grinding

over **25** successful  
years of  
moving people

**ATWELL  
MARTIN**  
ESTATE AGENTS

# Thinking of selling?

Call today for a free  
market appraisal

**01249 813 813**

