

THE BROMHAM HOOT

JULY/AUGUST 2023



NUMBERS YOU MIGHT NEED

Devizes (01380) numbers unless otherwise shown

Parish of Rowde, Bromham and Sandy Lane			Bromham Parish Council		
Rector	Vacancy		Chairman	Peter Paget	850246
Associate Priest	Rev Heather Smith	07702 113544	Clerk	Rosalind Humphries	850874
			Email: rosalindjhumphries@gmail.com		
Church Warden	Vacancy		Wiltshire Council	All departments	0300 4560100
			The Bromham Clubhouse		
Methodist Church	Rev Craig Manley	01249 818923	Bookings	Dave Paget	859492
	Jenny Blackman	850580	Email: clubhouse@bromhamsocialcentre.co.uk		
Roman Catholic Church	Fr Paul Gonsalves	723572	Chairmen	Malcolm Turner	850204
St. Nicholas School	Office	850391		Pete Davis	850792
PTA Chair	tbc		Clubhouse Cafe	Den Fillis	850473

Contacts for Village Organisations

Bell Ringers	Linda Drummond-Harris	07905 188030	Phoenix Club	Sandra Davis	850792
Bromham Amblers	Fiona Burtenshaw	07929 995093	Royal British Legion	Neil Meadows	850360
Busy Kids Pre-school	Kelly York	859389	Short Mat Bowls	George Henderson	01249 815388
Carnival Chairman	Peter Hindle	850925	Spye Park Cricket Club	Tom Mornement	850913
Football Club	Neil Davison	07860 557125	Stitchers	Ann Hannah	850589
Footpath Group	Linda Drummond-Harris	07905 188030	Tennis Court Bookings	Caroline Jones	850260
Friends B & SL Churches	Michael Armstrong	850345	Twinning Association	Janet Giles	850327
Gardening Club	Sue Skelt	850601	W.I. President	Lesley Eacopo	850967
Little Angels	Carole Myer	850706	Bromham Ladies	Muriel Sibun	850126
Monday Club	Carol Hindle	850925	Youth Club Secretary	Claire Smart	
Organisers	Cathy Welch	850555			
Mothers' Union	Carole Myer	850706	Drama Group	Penny Lander	859002

Village Website: www.bromhamwiltshire.org

BROMHAM PARISH COUNCILLORS 2023 - 2024

Name	Address	Tel. No.
Vacancy		
Rod AMOR	81 New Road, Bromham, Chippenham, SN15 2JB	850045
Jim BUTLER	Bromham House Farm, 40 Devizes Road, Bromham, Chippenham, SN15 2DX	850230
Jean COLLENS	17 Church Hill, Bromham, Chippenham, SN15 2JQ	850675
Adam COLLINS	81 Devizes Road, Bromham, Chippenham, SN15 2DZ	850228 / 850186
Phil COLLINS	81 Devizes Road, Bromham, Chippenham, SN15 2DZ	850228 / 07971 120601
Peter HINDLE	85 Netherstreet, Bromham, Chippenham, SN15 2DW	850925 / 07711 423549
Sam PAGET	28 Greystones, Bromham, Chippenham, SN15 2JT	850246
Peter PAGET (CHAIRMAN)	28 Greystones, Bromham, Chippenham, SN15 2JT	850246
Keith MAHONEY	43 The Pound, Bromham, Chippenham, SN15 2HF	850441
Jonathon SEED	Wayside, 12 Chittoe Heath, Bromham, Chippenham, SN15 2EH	07770 774463
Adam SLUSARCZYK	40 New Road, Bromham, Chippenham, SN15 2JB	07834 451728
Kate WHITE	30 Brick Hill, Bromham, Chippenham, SN15 2JL	

The Bromham Hoot is created and produced by:

Editor - Peter Hindle, Content - Heather Smith, Advertising - Tracey Hutchison,

Distribution - Carolyn White, Rachel Prichard

Please email us at: bromham.hoot@outlook.com

If you don't get your copy of The Hoot at the usual time or know someone who hasn't, do please let us know by emailing bromham.hoot@outlook.com and we'll try to sort it out.

Printed by: Springfords and Rose Ltd, 35 Eastleigh Road, Devizes SN10 3EQ



WELCOME TO THE BROMHAM HOOT

Welcome to the July - August 2023 edition of The Bromham Hoot. Our apologies for it being delivered a little late, but we wanted to make sure we included as many photographs from the Carnival as possible.

We would like to take this opportunity to say goodbye and thank you to Caroline Culley, who is moving away from the village to Shropshire over the summer. Caroline is the reason The Hoot came into existence during lock down, when she realised that many people in the village were not able to access social media to find out what help was being offered by Bromham Good Neighbours. Initially two information sheets were printed, which evolved into the Hoot once it became clear that the previous parish magazine was not going to be able to continue. Caroline has been involved in many and varied aspects of Bromham life over the years, and we probably won't realise just how valuable her contribution has been until she moves away. We wish Caroline and her family much happiness in their new community, and hope that she keeps in touch with her Bromham friends.

The next issue of The Hoot will be for September / October 2023, and will be distributed early in September.

The deadline for content and advertising will be Friday August 18th.

BROMHAM SOCIAL CENTRE MANAGEMENT COMMITTEE

All Parishioners of Bromham aged eighteen and over are invited to attend an

EXTRAORDINARY GENERAL MEETING OF THE ABOVE COMMITTEE

To be held at 7pm on 28th July in the Bromham Clubhouse

For a Public Consultation and vote to give permission for the Management Committee to release the assets from the Bromham Social Centre Charity to the new Charitable Incorporated Organisation to be set up by the new Trustees.

In accordance with the Trust Deed and Constitution for the Bromham Social Centre Charity set up in 1972, the Management Committee are given all rights of management, but the Deed states that should the assets of the Charity ever be requested to be transferred to another body, the CIO, this can only be decided by the inhabitants of Bromham by consultation and vote. Therefore, this is an important vote, you the parishioners decide if the monies are transferred to the new CIO or not. Please, if you are able, come along and give us your views and register your vote.

CHARITY MUSIC EVENT

IN ST. NICHOLAS' CHURCH,
BROMHAM

"THE CROFTON STOKERS"

FOLK & BLUES BAND

FRIDAY AUGUST 11TH AT 7PM

IN AID OF JULIA'S HOUSE
PLUS RAFFLE FOR CHURCH FUNDS

TICKETS £15 EACH

TO INCLUDE FINGER BUFFET PLUS
TEA OR COFFEE

AVAILABLE FROM:

TRACY COLLINS - 850228 / 850186
DEN OR CATH - 850473
OR IN THE CLUBHOUSE CAFÉ

GREGORY STEWARD PROFESSIONAL TENOR

presents

*An evening of Classical
Favourites and
'Songs from the Shows'*

*Les Miserables
Carousel
South Pacific*

With guest appearance: Ellen Steward - soprano

St Nicholas Church, Bromham

Thursday 20th July 2023 at 7.30 p.m.

Tickets £15 - to include refreshments

To book tickets please contact Ernest Escott on 850405
Or Linda Drummond Harris 07905188030

BROMHAM PARISH COUNCIL REPORT MAY / JUNE 2023

Mr. Peter Paget was reelected as PC Chairman with Mr. Jim Butler as Vice Chairman. Thanks were given to Mr. Rod Amor for his past service as Vice Chairman.

Councillor Vacancy: Following the retirement of Mr. Brian Amor a vacancy was advertised, no election was requested so the Parish Council can now co-opt.

Social Centre Rebuild: At the June PC meeting the Rebuild Committee presented architects' proposed plan layout for the new hub and a possible future master plan that will be presented at a Consultation Event on June 19th. The Clerk presented a list of queries and questions to be considered. A new Charitable Incorporated Organisation (CIO) has been set up for the new Hub with meetings to be arranged concerning the existing SC Management and the original 1972 Trust Deed. Funds now stand at £77,2128.10. Many thanks to all who are still fundraising - especially from the monthly café funds raised by Den Fillis and volunteers who provide cakes etc and help run the café, also the continuing sale of tea towels by Rachel Prichard.

Matters still ongoing:

- **Traveler's Appeal Refusal/Injunction:** Court hearing held last week in January. Fine Paid. No judgement yet made. WC Planning Enforcement team will continue to monitor the site and record the continuing breaches.
- **Wyatt's Lake** Concerns on going. A3102 Flooding Drainage scheme agreed by WC No date confirmed
- **A342 50 mph Speed Limit** – 40mph Sandy Lane and 50 mph speed scheme to cost £10,000. Calne without agreed to contribute £500. LHF12 12 months to implement..
- **Church Hill Speed Limit.**– Suggested Community Speed watch back up required /volunteers?
- **New Road 30MPH repeater signs** New contractors date on going
- **Pound Footpath Light out:** Reported September and Jan 3rd reported again to L Mayes.
- **Brambles – Chantry Car Park** – on going
- **Wednesday Club request** – Memorial Anchor. PP presented a proposed plan with measurements. Site still in discussion.
- **Eco Bromham land at the Pound planting Plan.** JT Paget has agreed to allow wild planting. It was reported that there are several areas set aside for wild flowers etc. throughout the village. RH to contact the Crown again regarding a 70 tree planting scheme. No reply
- **Breach Close Speed Humps:** These need to be a Highways official speed calming scheme. All Residents need to be consulted due to the implications of installing speed humps. Residents update?
- **Dog Bins and Millennium Field access notices?** RH to get quote for 3 bins, 2 to be emptied from Idverdi. Pavilion replacement bin ordered
- **Boundary Trees:** Huntsmead/Battle House. LM to inspect. Overgrown Highstreet Trees – WC to contact owner
- **Parking at Highfield/The Crescent:** Concerns forwarded to WC Highways. Asters are not obliged to provide parking for tenants. Replies from Asters and Fields in Trust. Contacts forwarded to Resident. RH received information regarding parking in grass grid - It was felt that this would not be an option for parking on the playing field due to poor visibility for children crossing the road. Fencing discussed- not an option, previous fence removed.
- **Play Area Light 29A out** – reported
- **Clerk's laptop – ongoing June.**
- **Village Trees Inspection** – Booked £350 budget.
- **Chittoe Heath Concerns update:** Contact from Jenny PC 0355 GROOME Devizes Neighbourhood Team, daily police visits organised. WC also involved to find a solution.
- **Pound Metro Count Requested:**
- **Highstreet Notice Board:** a new carved headed board to be put in the Bus Shelter.
- **A342 Drains to be jetted including St Edith's Marsh.**

Neighbourhood Plan: Meeting with new consultants to complete the plan and discuss if grants are still available.

New Defibrillator Batteries: All 5 batteries are required to be replaced at a cost of £285+VAT. Sponsorship a possibility – see separate article. List of locations in a separate article.

Coronation Celebrations: Many thanks to Den & Kath Fillis, Tracey Collins, and all volunteers including the full committee for organizing the celebrations including J Drew re the Church service. Also many thanks for raffle prizes- raising £721 plus the donated puddings. It was a superb village celebration with 12 events organized and all well attended. 26 teams took part in the quiz including a PC team.

Some disappointment with the school for not presenting the mugs until after the Coronation events on 9th May. The event was almost self-funding with the small shortfall taken from the PC Celebration Funds. Mugs are still available to purchase

Caroline Culley: The PC would like to thank Caroline for all her community input – the Monday Club, St Nicholas Church and the Good Neighbours' Scheme through Covid and beyond and probably much more that Caroline quietly contributed to. We wish her and her family well in their new home and community.

Family Event: A request has been agreed for the use of the Jubilee Field for a family event in July with a percentage of profits going towards the Rebuild funds.

First Aid Course: See separate article.

Internal and External Audits completed.

Next PC Meeting will be one week later than normal on July 17th.

All Parish Council and Social Centre Rebuild Committee minutes are available on the Village website when approved.

Rosalind Humphries, Parish Clerk - Tel: 850874 - Email: rosalindjhumphries@gmail.com

BROMHAM PARISH DEFIBRILLATORS

HOW TO ACCESS A DEFIBRILLATOR IN AN EMERGENCY

Bromham is very fortunate to have 5 defibrillators which have proved their worth on several occasions.

Public access defibrillators can be used by any member of the public

The defibrillator access code for the key pad is obtained by dialling 999

(If the code does not work press the cancel © button and try again)

Once access to the cabinet has been obtained you will find the defibrillator and a clear plastic pouch attached to the bottom of the defibrillator – this includes all necessary equipment, also a fluorescent jacket and torch.

When the defibrillator machine is opened, loud clear instructions will be given.

The 999 operator will also give instructions.

The defibrillator can detect if the patient has suffered a heart attack and will not administer a shock unless the patient has suffered a heart attack.

LOCATION OF BROMHAM PARISH DEFIBRILLATORS

- * Kiosk – Netherstreet (near The Haveli) SN15 2LJ
- * Kiosk – Hawkstreet (near lay by to ex Council houses) SN152HU
- * The Clubhouse (outside entrance door) SN15 2JB
- * Angell House (on wall next to main entrance door) SN15 2JR
- * V&P Collins' Farm Shop (on fence right hand side of gate) SN15 2DZ

NEW BATTERIES

The batteries in the defibrillators only last 3 years, and all five batteries are due to be replaced this summer. Each battery costs £285 + VAT + Postage so if there is any local business or parishioner who would consider sponsoring a battery please contact the Parish Clerk: rosalindjhumphries@gmail.com

LAURA MAYES - Wiltshire Councillor for Bromham, Rowde & Roundway

I write this after yet another extraordinary round of Bromham events including Coronation celebrations, the Teddy Bear Trail and the Carnival. Nothing demonstrates the strength of a community than the way Bromham pulls together to put on these fun filled activities, and it always great to see so many happy faces!

At Wiltshire Council we are always looking at ways to increase recycling rates. We have introduced a new service, so we now collect small rechargeable electrical items as part of our fortnightly recycling service! These items include:

- MP3 players
- Electric toothbrushes
- Shavers/trimmers
- All vapes and e-cigarettes
- Smart watches
- Mobile phones
- Digital cameras
- Charging devices/power banks
- Wireless earphones

All you need to do is to place them in a carrier bag next to your blue-lidded bin - please don't put them in the bin. So now is your chance to look in those cupboards and drawers to find those old gadgets and chargers you no longer need!

I've had another busy month as your Councillor, including helping residents with fuel bills, unsociable neighbours making excessive noise and planning issues. If you need any support, or have ideas on how to improve our area then please contact me directly.

Laura Mayes

Mobile 07855819343

Email: laura.mayes@wiltshire.gov.uk



BROMHAM & ROWDE CHURCHES

Those long, warm days of summer are upon us. As well as the lush growth in the garden, I relish the long summer evenings. I just love sitting out in the garden in the dusk, watching the bats fly past. I also love being out in the garden as the dawn breaks, hearing the bumble bees wake up and find the best flowers. It is sometimes easy to forget that everything in the natural world is part of God's amazing creation. God invites us to look after and care for his creation, to nurture and protect it.

I have found this lovely poem, to delight all the gardeners amongst us:

Tiptoe through the tulips, peering at the pieris, daft about the daffodils, prancing in the primulas, euphoric about the euphorbias, dancing around the dandelions, walking through the wallflowers, butterflies on the buttercups, swell with the Sweet Williams, ladybirds on the laburnum, anguish over the antirrhinum, God is in the godetia. Scent coming from the scabious. God is in our gardening. God is in the garden. Karen Kinloch

Caroline Culley



Church Services in July and August in Bromham, Sandy Lane and Rowde

Any changes to service times will be put on our Facebook page – Churches of Rowde and Bromham.

	8.00 am Eucharist (Book of Common Prayer)	10.00 am Eucharist
Sunday 2nd July	Rowde	Bromham
Sunday 9th July	Sandy Lane	Rowde
Sunday 16th July	No Service	Bromham
Sunday 23rd July	Sandy Lane	Rowde
Sunday 30th July	No Service	Bromham
Sunday 6th August	Rowde	Bromham
Sunday 13th August	Sandy Lane	Rowde
Sunday 20th August	No Service	Bromham
Sunday 27th August	Sandy Lane	Rowde
Sunday 3rd September	Rowde	Bromham
Sunday 10th September	Sandy Lane	Rowde

Contacts during the interregnum:

Revd Heather Smith 07702 113544 / revheathersmith@gmail.com

John Drew 01380 850908

Sarah Bowler, Administrator sarahbromhamandrowde@gmail.com

Web page : www.achurchnearyou.com/church/9620/

Letter from the Parochial Church Council

Hello everyone, we hope that you are well and enjoying at last, the current warm weather after it seems, such a prolonged period of chilly breezes. Although being Bromham, during spells of dry and warm conditions, the refrain is often heard, "We could do with some rain!" So, do spare a thought for our growers and farmers who have to invest a lot of money on irrigating their crops of our vital food supplies.

Well done all you gardeners for your efforts in bringing on such colourful floral displays around the village, including the wonderfully scented honeysuckle in the evenings, the sights and scents are so uplifting.

As the mercury rises and the need for a cool spot increases, you might like to consider visiting what was once the "Warm Hub", and is now the village's Quiet Space inside our Parish Church. You will find the same comfy chairs where you can sit and browse or swop from a collection of books or if accompanied, you might like to play some board games if it takes your fancy. There is also a selection of useful Craft magazines inside the Entrance Porch.

We invite everyone to sit in the coolness, quiet and calm and take the opportunity to escape from the sometimes humdrum of daily life and from the almost constant negative news stories from around our world, although it is often said that good news does not make profitable news copy.

Inside our Church, you will not fail to notice our reinstated Prayer Tree. Prayer Tree? This is an actual small branch which serves as a tree and the repository of pieces of paper cut in the shape of leaves on which any one can write a prayer. Perhaps you might be concerned for example, about a friend or family member who are having a tough time at present, there are "leaves" near the tree on which to express your thoughts and then place them on the tree. The leaves stay on the tree for a month and all those concerns will be prayed for at 10:00 a.m. on the first Wednesday of every month. Do come and join us and enjoy a cup of coffee afterwards. This writer thinks that everyone at some point, feels the need to have a chat with our maker, you can of course do this anywhere, but our Churches are open all day, every day.

Before you leave the Church, don't forget that on a table at the back of the Church is a selection of homemade, additive free jams and other preserves for sale, not yet prize winners, but not far off!

Now I'm afraid, more sad news. In the last issue of the Hoot, we reported of the passing of two loyal supporters of our Churches, (Bryan Reeves and Michael Lloyd Evans). The same sadness and sense of loss amongst all of our Church friends continues as we tell of two further deaths, those of Jill Garrett and Gill Lloyd Evans. Both ladies did so much for our Churches and they will both be greatly missed, and as such, we extend our sincere sympathies to the families and friends of both ladies. May they rest in Peace.

Isn't it great to hear the Church bells ringing out again. They have been out of action owing to emergency repairs to replace the rotten timberwork in the bell frame and support structure, all at a cost of £26,000 + VAT. Fortunately, we have been awarded grants to cover some of this cost, but the remaining money has come from our Church funds. Incidentally, well done to Lin and her team of ringers who continue this skilful tradition.

In order to replenish those funds, we hope that many of you will attend the concert in our Parish Church on Thursday 20th July at 7:30p.m. The concert features a young and newly qualified professional tenor, Gregory Steward, who, with his sister Ellen (who is training to be a professional soprano), will be singing a selection of popular songs from well-known stage shows plus some classical pieces. On Saturday 5th August in the Churchyard, we will be serving a Summer classic in the form of Cream Teas with a musical accompaniment and all at the exceptional cost of £4 per head. This will be an opportunity to meet up, relax, chat and partake of homemade scones and jam, locally sourced cream plus plenty of tea to drink. There will also be a raffle, so do please come along and support this social occasion.

Your PCC is constantly striving to keep both of our Churches a vital part of Community life as it has been for centuries and so it would help enormously if we could receive any suggestion or comment that you may have with regard to maintaining that continuity and specifically, how can we encourage our Church membership to grow because our current membership is mostly elderly and once we are gone, will our Churches be there for future generations? There is a Suggestion Box inside the Entrance Porch, so do please let us have your thoughts.

Now did you hear the story of the priest who bought a second-hand lawnmower at a Garden Centre Sale? No? Well once the priest got back home and filled up the fuel tank, he pulls and pulls on the starter rope without the engine firing up. He storms back to the Garden Centre to complain to the salesman, "I can't get the engine to start!", "That's because you have to curse to get it started". "I'm a man of the cloth, I don't remember how to curse" the priest replied. "You keep pulling on that rope, and it'll come back to you!"

Best Wishes from Revd. Heather Serjeant, Cynthia Wilkinson, Anne Smith, Heather Armstrong, Linda Drummond Harris, Dennis Powney, Phil Bayley, Ernest Escott.

Notes from the Belfry

We had been promised our bells would ring out for the Coronation, but it was not to be. New bearings had to be ordered from Belgium as the old ones were in a sorry state. Then there was a problem with two of the clappers, delaying the work even further. So the Coronation came and went and Bromham bells remained silent.

We had two weddings coming up in May, both of which had requested bells so we impressed on the bell hangers the urgency of the situation. Work recommenced on the structural repairs to the tower on May 15th and by May 19th the bells were rehung with their new bearings and refurbished clappers. However the ringing chamber ceiling had still not been replaced and there was no sound insulation between the bells and the ringers.

Equipped with ear defenders and ear plugs, a group of us assembled on the morning of the first wedding to try the bells. Unfortunately it was impossible to hear any calls so we were reduced to ringing basic rounds, but at least the wedding party had their bells as promised. It was another three weeks before the men were able to return to finish the job, completing the work on 16th June.

So, all being well, the bells will be sounding out once more across the parish, and even more important, the hands of the clock will no longer be stuck on twenty-five to seven. Hooray!

Linda Drummond-Harris

FROM THE METHODIST CHAPEL

Services in July and August (all at 10.30 am):

Sunday 16 July	Rev Roy Fowler
Sunday 23 July	Shirley Anne Cairns
Sunday 30 July	Sector Service at Corsham, Holy Communion led by Rev Craig Manley
Sunday 6 August	Derek Gard
Sunday 13 August	Holy Communion led by Rev Craig Manley
Sunday 20 August	Joanne Williams
Sunday 27 August	John Williams

Coffee and Chat from 10.00 am – 12 noon

Saturday 5 August

Saturday 2 September

For many years, as part of our fund raising events, we organised an afternoon tea at Angell House. Unfortunately, the Covid epidemic stopped these things happening. This year we are holding an afternoon tea on Saturday 22 July at 3pm at the Clubhouse when we will be serving strawberries and cream, scones, homemade cakes and a cup of tea, Bric a Brac, book stall and raffle. Tickets available from Jenny Blackman (850580) after Monday 3rd July priced £7.50 for adults and £3.50 for children. Any donations of raffle prizes, cakes, scones etc would be greatly appreciated, please contact Jenny Blackman. We welcome one and all to our services and events.

Jenny Blackman - Bromham Methodist Chapel

VILLAGE ORGANISATIONS & ACTIVITIES

Bromham W I

At our May meeting we were entertained with the music and singing of Bromham resident Neil Davison. This was a really fun evening, and everyone really enjoyed listening to, and joining in at times, the songs that Neil sang. As well as singing and playing his guitar, Neil told us about his music career and life, and we are hoping that he will come again to entertain us and continue his story. The songs were varied, from favourite pop classics to original pieces Neil had written. It was a lovely evening, enjoyed by everyone.

The speaker for our June meeting was Joanne Huntley, who is a lace maker and teaches lace making to both adults and children. She started making lace herself in 1977 and then began collecting examples of lace. Her interest in lace started when her grandmother gave her a box of old lace pieces and she now has hundreds of pieces of lace, some dating back to the 16th century. Joanne brought many examples of lace to show us, and she explained the development of lace making over the years and the different ways to make lace. Many of the examples were the beautiful lace collars that were worn by both men and women on their clothes in the 16th and 17th centuries, and the designs and workmanship were really beautiful. Two of our members, Rachael and Ann, acted as models to wear some of the collars, and seeing them being worn really enhanced their beauty.

The next meeting of Bromham W I is on Wednesday 12th of July when the talk is entitled "50 days after Waterloo". Meetings start at 7.30pm in the Clubhouse, and visitors are always welcome to any of our meetings. It was nice to welcome 2 visitors to our June meeting.

To learn more about Bromham W I please contact Lesley Eacopo (850967). New members are always welcome.

Sheila Sims

Bromham Phoenix Club

We hadn't far to travel for our outing to Bowood Woodland Walk on the 16th May.

It was a pleasant sunny day and we car shared to get there. We had a special reduced price for entry which was an added bonus. Everyone enjoyed a leisurely stroll around the lovely woodland. Sadly the Blue Bells and Azaleas were nearly over but the Rhododendrons were in full flower. Huge bushes of reds, pinks and creams. Near the pavilion you could sit and admire the vista between the trees of a lovely view fronted by huge cream rhododendrons. We finished the walk in true Bromham fashion, with a cup of tea and a piece of cake at the charming outdoor café. A lovely afternoon.

Our trip on the 13th June was to Blenheim Palace and was a very hot and sunny day.

Blenheim Palace is over 300 years old and is the only non-royal palace in the country. It has been home to the Marlborough family for many generations. On arrival we found we could have the services of a buggy to take us up to the house for members who would find the long walk difficult.

Most members chose to look round the house first, which is of course magnificent. Virtually the first room you enter is the room where Winston Churchill was born in November 1874 to the wealthy Spencer family. At the moment there is an exhibition of his life and times and well worth a visit, especially to those of us who are old enough to remember how he lifted our spirits during the 2nd World War and was such a wonderful leader. To quote one of his many stirring speeches, "I have nothing to offer but blood, toil, tears and sweat".

After touring the house it was very pleasant to sit on the outside patio overlooking the ornamental water gardens and have a cool drink. Some of our group chose to head into the enormous parkland and have a picnic under the trees, whilst others had lunch at the café near the shops and entrance. We just had time to go on the little steam train that ran down to the walled garden, eat an ice-cream and get back to our coach for 4.00p.m.

Jean Turner

Bromham Footpath Group

For our out of village walk in April we met at West Woods near West Overton, famous for its bluebells. We were a little too early to see them at their best but we had a pleasant circular walk along the woodland paths into Lockeridge and back to the car park. From there we managed to beat the rain back to Beckhampton for lunch at the Waggon and Horses.



Our starting point in May was a little further afield at Wootton Rivers. Unlike the April walk, it was a warm, sunny day as we set off through the village and along the canal towpath. The terrain was mostly flat except for a slight incline up from the canal onto Mud Lane which luckily did not live up to its name. The slight elevation afforded stunning views of the surrounding countryside. Eventually we dropped down to lower ground and, after a slight deviation from the route on the map, found a footpath which took us back into the village and our lunch at the Royal Oak.

We meet every Thursday at 9.00am at the Social Centre car park for a two hour walk. For details of our next out of village walk, please contact me on 07905188030.

Linda Drummond-Harris

Bromham Amblers Walking Group

We meet every Thursday at 10.00 am in the village car park by The Greyhound. The friendly group walk gently - with no stiles - locally. About once a month we share lifts to amble somewhere else. We arrange to have coffee somewhere every week at 11 o'clock. We generally have between 8-20 people weekly walking and it's a lovely supportive and fun group.

Fiona Burtenshaw, 07929 995093, email: fiona@aps.ltd

Bromham Gardening Club

Bromham Gardening Club meets on the third Thursday every month in the clubhouse from 7.30 – 9.00pm (unless there is a garden visit). Fees are £25 per year or £3 per session for visitors – everyone is welcome.

Programme for next 3 months:

- **20th July** - BBQ and Raffle at the Clubhouse 7.30pm. Food will be provided (free for members and £5 for visitors). Advance booking is essential – please let Judi know by Monday 17th July.
- **17th August** - visit to Cynthia Wilkinson's garden. 7pm start.
- **21st September** - Tomatoes and Chilli talk – there will be tasting as well and homemade sauces for sale. Winner of the heaviest sunflower head to be announced – so don't forget to bring your entries.

Community Allotment

The launch of the community allotment saw a group of members and Bromham residents transform the weed filled patch into a clear space within a couple of hours. Many thanks to everyone who turned up but particularly to Vince who wielded his rotavator for the whole 2 hours. We also enjoyed some homemade scones and nice cold drinks. There are now various vegetables growing happily and there will be some harvesting to be done very soon. The lettuce and gooseberries will be the first to be ready. There is also a bench that everyone is very welcome to use and it's big enough to share with a friend for a chat. Please keep your eyes open for work/harvest dates on the Greyhound and allotment noticeboards and also on the Spotted in Bromham Facebook page.

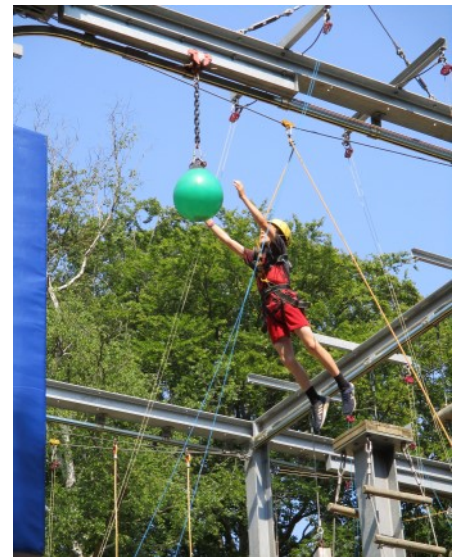
Please look for updates and reminders on FaceBook (Spotted in Bromham) and on the village notice boards. We also have email notifications if you'd like to be added. For any information please contact: **Judi on 850611 or 07789 537775 (preferably by text or WhatsApp).**

Summer has arrived at our village school

Having gone through the annual process of Year 2 and Year 6 statutory assessments, phonics screening for our Year 1s and Times Tables assessment for our Year 4s, the children and school adults are ready to get out and about more.

Two teams of children enjoyed a beautifully sunny and breezy day of cricket at Kingsbury Green Academy, overlooking the Cherhill White Horse. The teams were a credit to themselves and the school as they showed a great team spirit and respect for other teams at all times. Whilst the setting was quintessentially British, they played a non-traditional version of quick cricket called Dynamo Cricket which means that everyone bowls and bats and the pace of play is more fun for the younger children. Some of the other schools selected their teams to include children who have the opportunity to play cricket outside of school but there were so many children wishing to participate that we had to put names into a hat which meant it was a fair selection process potentially providing the opportunity to all.

The Year 5 and 6 children went on their travels to Ferny Crofts residential centre in the New Forest for three days recently. They challenged themselves in a variety of adventurous activities including tunnelling, archery and the high ropes course with a leap of faith. The children gelled well and encouraged each other when anyone was feeling anxious about some of the more adventurous activities. This residential experience will stay with the children for years to come and supports their increasing maturity and independence ready for moving on to secondary school.



While the older children were away, Years 2,3 and 4 ventured to Berkeley Castle where they had a guided tour of the castle and enjoyed the grounds. The teachers are always grateful to the parents who give up their days to support these trips to ensure the children are safe and happy.

By the time this is published, the Key Stage 2 children will all have completed the Scootability programme which helps them to become safer in and around the village. The Year 6 children came back from residential almost straight into a day learning how to ride their bikes safely, being aware of pedestrians and other road users. During June, St Nich's children have entered a competition to design a poster to encourage drivers to slow down when driving through the village. The winning designs will be available on the school website (<https://www.stnicholasbromham.co.uk/>) before the end of term so residents can print one off and display somewhere prominent such as a wheelie bin, garden gate or window.

Coming up before the summer break we have the usual leavers events and end of term church service, sports day (organised by our Year 6 Sports Leaders), an inter-school Olympic athletics style event and the school production.

Clare Kitts

RBL Bromham Branch 1922-2022

Welcome to the latest insight from Bromham Veterans.

Hopefully readers of this edition from Bromham Veterans have had a nice summer and have enjoyed attending this years carnival? Sadly we were unable to set up a table in the main arena. However, thanks to our Chairman and his lovely Wife, they entered 2 dioramas for the Teddy Bear trail. We held our quarterly meeting and we are planning for next year. Our AGM is to held on 20th Sept at the clubhouse, so I will post notices from this event. Carry on enjoying the weather and hope to see some new faces at our 3rd Wednesday gathering at the Greyhound.

Upcoming Calendar of events:

- **Wednesday 19th July 2023** - Veterans' 3rd Wednesday Social at the Greyhound - 19:30hrs
- **Wednesday 16 August 2023** - Veterans' 3rd Wednesday Social at The Greyhound - 19:30hrs
- **Wednesday 20 September 2023** - Bromham RBL Quarterly Meeting at the Clubhouse - 19:30 hrs followed by Veterans' 3rd Wednesday Social at The Greyhound
- **Wednesday 19th October 2023** – Veterans 3rd Wednesday Social at the Greyhound – 19:30hrs
- **Sunday 12th November 2023** – Remembrance Sunday Service at the Church, followed by laying up of wreaths at the memorial. 14:00hrs
- **Wednesday 16th November 2023** – Veterans 3rd Wednesday Social at The Greyhound – 19:30hrs

Please let us know if you would be prepared to help in any way you can by emailing us at:

bromhamveterans@gmail.com

Whatever support you can give will be most welcome.

Bromham Youth Group

It's been good to see some sun at Youth Club and be able to get outside more over the last two months. We have recently been playing football and rounders on the school field. The rounders match was so close there was only one rounder between winning the match. Members recently took part in a Bromham trail hunt activity where they had to follow instructions and go out to find clues on a set route. Well done to Liana and Frankie who won. If you would like to have a go yourself the trail is on our Facebook page.

As part of the Teddy Bear Trail members are supporting the Carnival team on the Saturday by running the Tuck Shop. Members volunteered their time to take part in three shifts.

As part of the King's Coronation events in the village Youth Club hosted a field events activity in the marquee. Young people took part in space hopper racing, towel volleyball and football. We ended with Bromham's first junior hot dog eating competition which was won by Erin. Members also ran a stall at the car boot sale to raise some cash.



Thank you to Bromham Good Neighbours and Caroline for the recent kind donation to the club. Thank you to Calne Lions, we are planning our summer trip in the August holidays, the first one since before Covid. Members are going to play crazy golf, LaserQuest and bowling.

Darren Barber

BROMHAM CARNIVAL 2023

Saturday 17th - Sunday 18th June - Bromham Teddy Bear Trail

Carnival Week began with Bromham's seventh annual Teddy Bear Trail. Fifty teddies representing "Nursery Rhymes Old and New" were displayed around the village, and visitors from far and wide came to try and work out what they all were. Here are just a few of the entries this year.





The winner of the favourite bear was ...

Number 32 - Pussy Cat, Pussy Cat created by Sue Dolman



Here are the answers to the 2023 Teddy Bear Trail

Please note that due to an error we had two bears the same so points were given to everyone for no.16 as this was our mistake!

- | | | |
|---------------------------------|--|---------------------------------|
| 1 Star Light Star Bright | 15 Little Miss Muffet | 33 I'm A Little Teapot |
| 2 Little Bo Peep | 16 EVERYONE GETS A MARK FOR THIS ONE | 34 Dr Foster Went To Gloucester |
| 3 Old Woman Who Lived in a Shoe | 17 Skip To My Loo | 35 Incy Wincy Spider |
| 4 It's Raining It's Pouring | 18 Lavender's Blue Dilly Dilly | 36 Mary Mary Quite Contrary |
| 5 Pop Goes The Weasel | 19 Ring A Ring of Roses | 37 BINGO |
| 6 The Colours of the Rainbow | 20 Old Mother Hubbard | 38 Hey Diddle Diddle |
| 7 There was a Crooked Man | 21 5 Little Speckled Frogs | 39 Wee Willie Winkie |
| 8 Old King Cole | 22 Rub a dub dub three men in a tub | 40 Cobbler Cobbler |
| 9 Humpty Dumpty | 23 Pat a Cake Pat a Cake Bakers Man | 41 Miss Polly Had a Dolly |
| 10 Rockabye Baby | 24 One Two Buckle My Shoe | 42 Wind the Bobbin Up |
| 11 Ding Dong Bell | 25 Hickory Dickory Dock | 43 Sleeping Bunnies |
| 12 Jack & Jill | 26 Queen of Hearts | 44 One Potato Two Potato |
| 13 Polly Put The Kettle On | 27 Row Row Row Your Boat | 45 Little Tommy Tittle Mouse |
| 14 Sing A Song of Sixpence | 28 She Sells Sea Shells on the Sea Shore | 46 Tom Tom The Piper's Son |
| | 29 Round & Round The Garden | 47 Diddle Diddle Dumpling |
| | 30 I had a little nut tree and a golden pear | 48 Old MacDonald Had a Farm |
| | 31 Lucy Locket Lost Her Pocket | 49 Mary Had A Little Lamb |
| | 32 Pussy Cat Pussy Cat Where Have you been? | 50 Little Jack Horner |

Tuesday June 20th - Tea Dance

On Tuesday we introduced a new event to the Carnival lineup - a Tea Dance. It wasn't exactly Strictly, but everyone who attended thoroughly enjoyed themselves. Very many thanks to all the individuals and companies that provided cakes and to the team of volunteers who made sandwiches.



Wednesday June 21st - General Knowledge Quiz

Wednesday evening saw 31 teams attempt to cram into the marquee for the General Knowledge quiz - three teams had to sit outside, but with the hot weather, that might have been an advantage. Adam Dempsey set a challenging series of rounds, ending in a clear win for the "Nic Naks". In second place were the "Dream Team", then only 3 points separated the next 10 teams!

Huge thanks to Adam for setting the questions and for being our quiz master, to Chris Downing for running the scoring spreadsheet and to all the other helpers and markers.



Thursday June 22nd - Bingo Evening

It wouldn't be Carnival without a Bingo evening, and the marquee was full to capacity again. Many thanks to Lesley Eacopo for calling and Anne Smith for selling the books of cards.



Saturday June 24th - Carnival Day

Thank you and well done to everyone who took part in the procession on one of the hottest days of the year so far!





Yes, that really was the Red Arrows doing a fly past over the Jubilee Field just as the Carnival was ending and people were starting to return to the field for the evening! We didn't know that it was definitely going to happen until about an hour before. Huge thanks to Paul Coles and the Red Arrows for making it happen!

It was fantastic to see so many people back on the field in the evening having a drink and enjoying a hog roast and Indian street food while being entertained by Pete Lamb's Heartbeats.



“Tote on Tour” competition is launched!

Prizes for the furthest distance and for the most imaginative photo ...

- * Buy an I ❤️ Bromham Tote Bag for just £5 from any of the Carnival Committee or The Patchwork Rabbit
- * Take it on a trip, or on holiday
- * Take a photo to show where you have been with it
- * Post the photo on the Bromham Carnival Facebook page

Deadline is Christmas 2023



The Carnival Committee would like to extend a huge thank you to everyone who helped make the this year’s Carnival a success again. Even more importantly, thank you to everyone in the village for supporting the events so enthusiastically. It makes all the hard work worthwhile to see so many people enjoying themselves, and at the same time raise a significant amount of money towards the Social Centre Rebuild and to support village organisations.

We are still working out the final accounts, but so far we have raised over £5,000 this year.

In addition to making a substantial donation to the Social Centre Rebuild, the Carnival Committee would also like to support village organisations that need funds for specific projects.

If your group or organisation has a specific project that we could fund or contribute to, then please let us know by emailing: bromhamcarnival@gmail.com with full details and estimated costs. We will be discussing donations at our meeting in September, so please submit any applications by Friday September 8th.

GOOD FOOD, GOOD COMPANY AT MONDAY CLUB



I look forward to
Mondays!



It's so friendly
and welcoming!



Never a dull
moment!



The home cooked
food is delicious!



I go home smiling!

Why not come along and join us? To find out more about Monday Club, please contact :
Carol - 01380 850925 or Cathy - 01380 850555

BROMHAM COMMUNITY HUB - CONCEPT DESIGN

It has taken a long time to reach this stage, but we now have a design for a new Community Hub. The architects plans have been discussed and revised by the Rebuild Committee, who presented them to the Parish Council at their meeting in June. The Parish Council in turn recommended that the plans were presented to the village for discussion and feedback which took place at a well attended meeting in the Carnival Marquee on June 19th. During a lively discussion, many questions were raised by attendees and answered by the Rebuild Committee, and a show of hands unanimously supported the plans.

The architects are now working on design details with the aim of being able to submit a planning application as soon as possible.

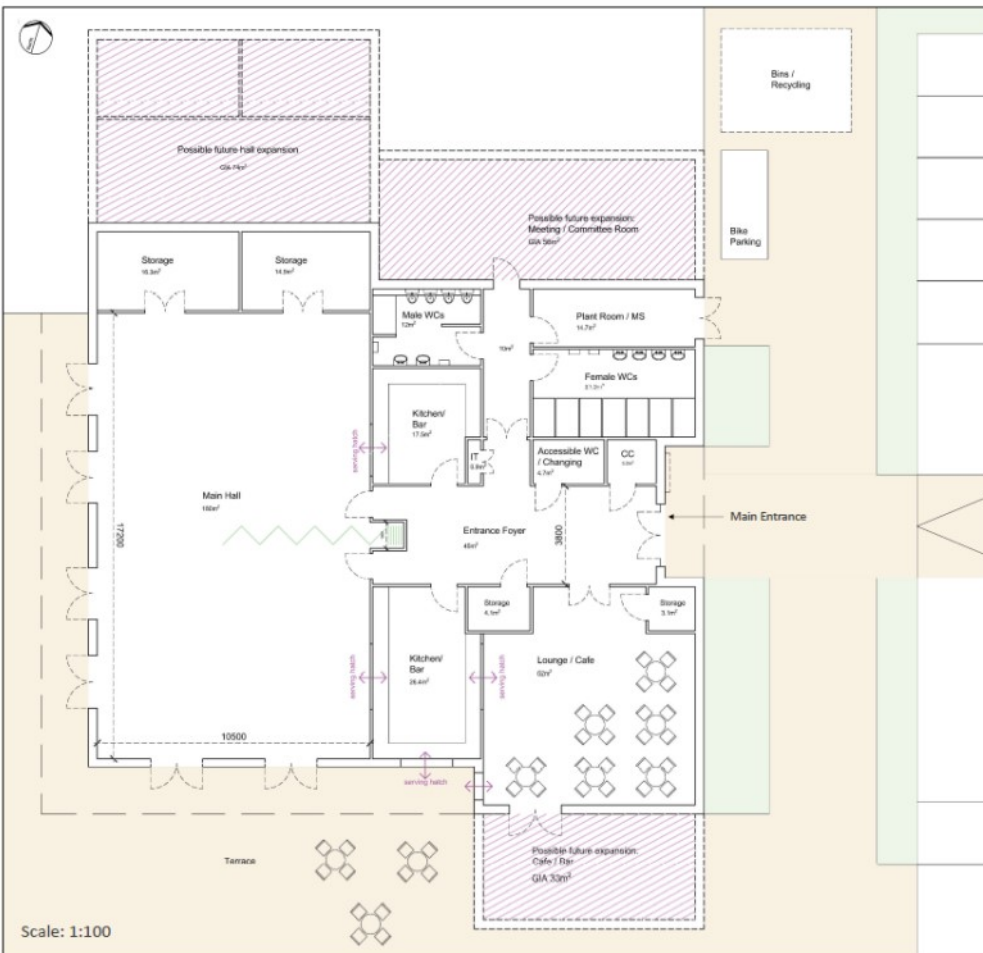
If you would like to see the plans in more detail, or have any questions or feedback - please contact one of the Rebuild Committee or come along to any of their meetings.



25 Year Master Plan

This is not part of the detailed planning application, but it shows what could happen in the future if required and the Parish Council and the village agreed. It is important to have done this work at this stage to ensure that the design and position of the Community Hub don't conflict with any potential future plans, even if they could be many years away.

The detailed planning application will be made for the Community Hub building - shown in blue on the plan.



Proposed Layout

The proposed design will deliver very flexible spaces including a main hall that will seat the same number of people as the old Social Centre, but that can also be split into two completely separate spaces using a folding divider.

A third area is designed as a café / lounge area. Two kitchen / bar areas are included; one would be primarily a kitchen, but with the capability of also being used as a bar for one of the hall spaces - while the other would be primarily a bar, but with kitchen facilities to support the café.

All three spaces will have direct access to an outdoor wrap around terrace.

The two pitched roof design allows for possible future extensions at the ends (shown hatched in red), with minimal disturbance.

The building will be positioned at the rear of the previous footprint, and rotated to give maximum light into the building and for the solar panels mounted on the roof slopes. This will also take maximum advantage of the views across the Millennium Field.

FRIENDS OF BROMHAM AND SANDY LANE CHURCHES

In the middle of the village of Bromham a large stone building has been standing for over 900 years. It has been altered and added to over the years and you will recognise it especially by its spire and all the crenellations and carvings around the outside as well as all the table tombs surrounding it. This is the parish church of St Nicholas.



Since the devastating fire that destroyed the village Social Centre the church has been the venue for extra diverse events such as special parish meetings, fund raising for the new social centre and even the meetings of the Monday Club and the part time post office for a short time. The church is a regular venue for the Little Angels mother and toddler group and fund raising events for the church. It is a collection point for the local food bank and you will also find jams and other items for sale. Church services are listed in each issue of the Hoot.

All visitors and parishioners are welcome into the church. It contains many interesting clues to the history of the village and surrounding communities as well as the development of religious worship. Its 15th century chantry chapel is of national importance. Its painted panelled ceiling has a greater area of original medieval paint than any ceiling in our great cathedrals.

Anyone is welcome to enter and look around. Information is provided to help you to explore. Tours can be arranged by contacting the telephone number below.

When you drive into the village of Sandy Lane on the way to Chippenham from Bromham, take the first turning on the right (Back Lane) and a little way up on the right you will see a thatched wooden building set back up a slight slope. This is the church of St Mary the Virgin and St Nicholas. It is possibly the only timber and thatch building in the country originally built as a church. It was opened in 1892 as a mission church to counteract the rise in the number of chapels of various denominations being opened nearby. It had close associations with the church in the nearby village of Chittoe and was re-consecrated in 1980 to hold marriage services, baptisms and funerals when the Chittoe church was being closed. As with the parish church, anyone is welcome to enter and look around.

The Friends of Bromham and Sandy Lane Churches was founded as a Charitable Trust in March 1987 to raise and manage funds which will assist in meeting what is the constant need for repair and maintenance of the buildings and grounds of both churches and the improvement of their fittings, furnishings and amenities. Its biggest project has been the conservation of the chantry chapel completed in 2007 at a cost of over £300,000 but other work continues. The Friends also help with the use of both churches as centres of Christian worship and appropriate cultural activities for the benefit of the local community.

The Friends invite you to become a member of the charity and support its fund raising by making a donation to its funds each year (usually £10 but more if you can afford it) and supporting any fund raising events that are arranged. You do not have to be a member of the church to join, just share an interest in historic buildings and our lovely communities of Bromham, Chittoe and Sandy Lane.

For further information please call Carol or John Drew on 01380 850908 or email jc.drew@btinternet.com

Membership forms can be found in both churches.

Bromham Good Neighbours

Bromham Good Neighbours was such a lifeline during the covid pandemic thanks to all the amazing volunteers who went out collecting prescriptions and delivering them to those who could not leave home. It seems like a distant memory now. I remember our volunteers queuing for hours outside pharmacies, to collect medication. I remember visiting the back doors of pharmacies to collect bulk orders of prescriptions out of hours. That is really what it was like 3 years ago.

Thankfully we do not need a group of volunteers to do this any more! I have wound up Bromham Good Neighbours and closed down the bank account. There was £237.76 remaining in the account. This was made up of money from donations and a small grant we received. I wanted the money to benefit people in the village so a donation of £137.76 was made to Bromham Youth Club and £100 was given to the Mother's Union to pay towards a summer holiday for a Bromham family who really need a holiday.

I'm sure if Bromham ever needed such a team of volunteers again, that Good Neighbours would rise up again!

Caroline Culley

Netherstreet Plant Sale

Once again the sale was able to take place in the grounds of Jane and Graham's Netherstreet home. It really is an ideal location, providing plenty of space to pitch marquees and gazebos, and allowing room for a wide variety of plants that so many people had nurtured through a difficult growing season. The sale was held a little later this year than previously, partly because of the Coronation, but it still meant the weather forecast was nervously scanned to see what the weather gods had in store. Fortune was once again on our side: it was dry and not too breezy as we prepared the site.

Two marquees were erected, one large enough to house the teas and refreshments, as well as the raffle table. The second marquee provided a home for the children's activities which were run by 11 year-old Margot and 10 year-old Neve. Tables and chairs were ferried over from Market Lavington and gazebos and more tables borrowed from the village. Everything was set up in advance, so that plants could be wheelbarrowed round by their local growers, and displayed beforehand. Cakes were baked, plants donated and raffle prizes collected. The organisers were overwhelmed with the generosity of both friends and neighbours, as well as local businesses.



A steady stream of people made their way into the sale. Plants and raffle tickets were bought, and people were able to sit and enjoy their drinks, cake and chat. By 3.30 most of the plants had been bought and Den Fillis began to draw the prize-winning raffle tickets. At 4 o'clock it was all over. Not many plants were left but almost all of them were subsequently sold. Last year the sale raised £1,500 and the proceeds were shared between half-a-dozen village groups. This year we managed to exceed that amount, thanks to everyone's generosity. The children's activities, which allowed parents time to concentrate on checking out plants rather than keeping an eye on their offspring, and the Eurovision competition, also contributed to the final total of £1,800. This will be shared round as before and we'll report where it's gone to and what it's enabled groups to do in a subsequent edition of The Hoot.

An event like this cannot happen without support from a wide range of people and thanks are due to everyone who helped in setting up and taking down. As important as the sum raised was, equally important was the way in which our local community came together to make the event so successful.

Carolyn White and Liz Durant



BUSY KIDS NURSERY

Bromham, Wiltshire

01380 859389 busykidsbromham@outlook.com



We have been making the most of the wonderful weather and spending lots of time outside over the last couple of months.

Our youngest children have been enjoying lots of water play and plenty of messy play too. They have been exploring the colours of the rainbow in our art and craft activities and have been practising taking turns.



The toddlers have been doing lots of painting and have been learning the names of the different colours. They also took a trip to the park which they loved.



The pre-school children have been reading the Gruffalo and took part in a Gruffalo trail searching for the animals that appear in the story. Then they spent time creating the animals with clay. They even had a go at making Gruffalo Crumble!

The pre-schoolers have also enjoyed hunting for treasure in our woodland area and then exploring the treasures to see who found the smallest one!





BUSY KIDS NURSERY

Bromham, Wiltshire

01380 859389 busykidsbromham@outlook.com



BROMHAM CARNIVAL!

We all had a wonderful time taking part in Bromham Carnival. The children spent lots of time creating some fabulous leaves and creatures to decorate the float. They loved getting dressed up and we think they did an absolutely super job.

Thank you to all of the parents, members of the committee and staff who helped put together the float, created the most wonderful costumes and helped out on the day.

A huge thank you to Tim Paget for providing the tractor and trailer and helping us put everything together. Thank you to Ash Oliver, Sue and Simon Dicks, Dave Stiles and Zoe and Jen Brightmore-Back for your help putting the float together and providing equipment.

A big thank you to Colin Ovens for doing a super job as scarecrow Reginald Rake driving the tractor and keeping us all safe onboard.

Hannah Paget, our artistic director who helped us endlessly and created the incredible Superworm and Snake for the float. We couldn't have done it without you, thank you!



We would like to say a huge thank you to H. F. Stiles & Son Butchers for their extremely generous donation of £660 from their plant sales to go towards rebuilding our outside shaded area. It is very much appreciated.

PLEASE HELP US
TO DRY UP!

£3000 BANKED SO FAR FOR
THE REBUILD FUND

BROMHAM TEA TOWEL

For sale in the Clubhouse Cafe
every Thursday & Friday
10.30 am - 1.30 pm

£10 each
or
10% OFF
when you buy
2 or more



To place an order contact...

rachel.prichard@btinternet.com or text 07759 009507

State your name, number of tea towels, address and contact details.
Payment will be due on delivery of order via cash or cheque.

WILTSHIRE CERAMIC STUDIO

Your local clay makers' space

Parties ♦ Date
Nights ♦ Lessons



WILTSHIRECERAMICSTUDIO.CO.UK

Stockham Marsh Farm, Foxham

☎ 07543388124

*Safeguard yours and your
family's future today*



RMD & Associates

— WILLS & LASTING POWER OF ATTORNEY SPECIALISTS —

Rudi Dalby
07791879774

www.rmdandassociates.com

BOYD WILSON DESIGN

DECORATING + DESIGN STUDIO



Interior Painting
Color Consulting
Faux finishing + Murals
Interior Design
Art + Decor + Furnishings
Architectural Drawings + Design
Landscape Design Concepts
Small + Large Jobs

MAGDALEN BOYD-WILSON
DECORATOR
INTERIOR DESIGNER
FINE ARTIST



WWW.BOYDWILSONDESIGN.COM TEL: 07833 863 998 MBOYDWILSON@GMAIL.COM

ACTIVE PLUMBING SUPPLIES



- ☀ Plumbing & Heating Supplies
- ☀ Boilers
- ☀ Radiators
- ☀ Solar Panels & other Green Technologies
- ☀ Water Softeners & Salt



1 Stanier Road | Porte Marsh | Calne | SN11 9PX
www.plumbingsuppliescalne.co.uk

01249 818811

Open: Mon - Friday 7.30am - 5pm & Sat 8am - 12pm

ACTIVE KITCHENS | BATHROOMS DOMESTIC APPLIANCES

- ☀ Bathrooms, Wet Rooms & Shower Rooms
- ☀ Bespoke Kitchens
- ☀ Granite, Silestone & Laminate Worktops
- ☀ Washing Machines and Dishwashers
- ☀ Kitchen Appliances, Integrated or Freestanding



01249 813871

Open: Mon - Friday 8am - 5pm & Sat 8am - 2pm



AUDI VW CENTRE

B R O M H A M

We are now taking bookings for MOT's at our custom built new workshop located in Bromham.

All brands & models catered for.

Please call **01380 850300**
or visit
www.audivwcentre.com



Established 1984

Chris Caravan Services

Your Local Mobile Caravan & Motorhome Habitation Service Engineer



07849-267589



chriscaravanservices@gmail.com



We are an independent, award winning, family run funeral directors and natural burial ground owners, led by Aaron and Jonathon Bewley

- Available 24-hours
- Bespoke and tailored services inc eco friendly options
- Electric Tesla Limousines
- Pre-paid funeral plans



Leafy Lane Natural Burial Woods is the ideal choice for those seeking somewhere elemental and beautiful to have a funeral and remember a loved one. Contact us for more information on burial and ashes plots and memorial trees.

ENQUIRIES@AJBFUNERALS.CO.UK
WWW.AJBFUNERALS.CO.UK

HELLO@LEAFYLANEWOODS.CO.UK
WWW.LEAFYLANEWOODS.CO.UK



57A PICKWICK ROAD
CORSHAM
WILTSHIRE
SN13 9BS

T. 01249 713 134

26A CHURCH STREET
MELKSHAM
WILTSHIRE
SN12 6LS

T. 01225 708 736

3B NEW ROAD
CHIPPENHAM
WILTSHIRE
SN15 1EJ

T. 01249 660 554

LEAFY LANE WOODS
LEAFY LANE
CORSHAM
SN13 0LD

T. 01249 713134

OLIVER'S ELECTRICAL Ltd

YOUR LOCAL ELECTRICIAN

Fully Qualified Electrician

Over 15 years experience

Based on The Pound in Bromham

Call Ashley Oliver - 07946 588817



The Smithy Clinic

The Old Smithy, 1, The Pound, Bromham, SN15 2HE

PHYSIOTHERAPY

Relieve pain and restore function through Physiotherapy.

We are able to treat:

Sports injuries

Musculoskeletal

Neurological

and a range of other conditions

Other Therapies available:

Acupuncture

Homeopathy

Podiatry

Sports and Remedial Massage

Phone: 01380 850595

Email: reception@smithyclinic.co.uk

Website: www.smithyclinic.co.uk

Opening Hours:

Monday – Friday 9 a.m. to 5 p.m.

*Occasional clinics on Saturday mornings
- please telephone for details*

Online booking now available via our website



THE GREYHOUND B R O M H A M

EXCITING NEWS.....

WE ARE NOW OPEN 7 DAYS A WEEK
FOR FOOD AND DRINKS

Visit our website for details.

We are a multi-award-winning country pub and restaurant serving delicious homemade food with an ethos of excellent quality ingredients and good value for money.

We have a vibrant bar, charming restaurant, beautiful beer garden with covered areas, a cosy dog-friendly snug and a crackling open fire in winter.

High St, Bromham, Wiltshire SN15 2HA
01380 850241 | thegreyhoundbromham.co.uk



Have you visited our sister pub.....?

THE GEORGE INN S A N D Y L A N E

We offer a delicious West Country Carvery, served daily alongside our tasty pub-classics menu.

New Carvery Serving Times:
Wed and Sat 12-2.15pm & 5pm-8pm
Thu-Fri 12-2.15pm
Sun 12-5pm

**We no longer serve Carvery on
Thursday & Friday evenings....

Special Offers:

Wednesday Night Carvery Special 2 for £25
Thursday Burger Night 2 for £25
Friday Night Fish & Chips Special 2 for £25
Saturday Night Carvery Special 2 for £25
T&C's Apply

OPEN:

Weds to Sat: 12pm - 3pm & 5pm - 9.30pm,
Sun: 12pm-6pm

Sandy Lane, Chippenham, Wiltshire SN15 2PX
01380 850403 | georgesandylane.co.uk



11th Hour Escape Rooms

Can you escape a locked room in 60 minutes?

Find clues, solve puzzles and locate keys!

We have 2 wonderful themed & immersive rooms to choose from



Victoria's Last Challenge - Escape the attic with your inheritance Criminal Record - A murder mystery/whodunnit escape room



Find us

Offices above Audi Sales Centre,
91 Devizes Road, Bromham, Chippenham,
Wiltshire, SN15 2DZ.

01380 609608

Enquiries@11thHourEscapeRooms.co.uk

www.11thHourEscapeRooms.co.uk



Esther Smith Massage



Swedish / Relaxation
Sports & Remedial

Deep Tissue & Trigger Point
Pregnancy Massage



The Gardens, Bromham
07815 424501

contact@esthersmithmassage.co.uk



Baby Massage Classes

Baby massage is a wonderful, soothing therapy that calms your baby, creates bonding time and promotes healthy development

Small intimate groups for individual attention and ongoing support

4 week course of 1 hour sessions
Suitable for babies 6 weeks to pre-mobile



The Gardens, Bromham
07815 424501

contact@esthersmithmassage.co.uk



Cathy's Yoga classes



WELL WOMAN YOGA

Open to women of all ages

Tuesdays 9.30am-10.45am at Rowdefield Education Centre

Wednesdays 7.30pm-8.45pm at White Horse Yoga Centre, Devizes

MUM & BABY YOGA

From 8 weeks after birth

Tuesdays 11.00am-12.15pm at Rowdefield Education Centre

PREGNANCY YOGA

Wednesdays 6.00pm-7.15pm at White Horse Yoga (Devizes)

From 12 weeks of pregnancy onwards

CHAIR YOGA (online via Zoom)

Fridays 11am-12 noon

Open to all (men and women) – all you need is a chair!

WELL WOMAN YOGA (online via Zoom)

Mondays 7.45pm-9.00pm & Fridays 9.15am-10.30am

Open to women of all ages

Gentle yoga practices to promote physical and mental balance and a feeling of calm vitality. Work towards helping to improve circulation, postural alignment, flexibility, muscle tone and balance. Restorative practices and breathing techniques accessed in a safe and supportive environment.

No previous yoga experience necessary.

If you are interested in any of these classes please email Cathy Welch on cathywelchyoga@gmail.com or call/text 07960 330131

Online booking: www.bookwhen.com/cathysyoga

Website for yoga & homoeopathy: www.womenswellnesswiltshire.com

GRAY & AMOR LTD.

CARPENTRY & PROPERTY RENOVATION

Covering all aspects of property renovation and maintenance.

View our range of services online or call to discuss your project.

01380 587006 / 01672 596006

info@grayandamor.co.uk www.grayandamor.co.uk



Beautifully Bespoke Ceremonies

Weddings
Funerals
Namings
Vow Renewals

www.mwcelebrant.co.uk

Tel : 07919598013



LISA LAMB YOGA

YOGA CLASSES FOR ALL ABILITIES TO IMPROVE STRENGTH, BALANCE & FLEXIBILITY ALONGSIDE A SENSE OF WELLBEING.

DAY	TIME	LOCATION
WEDNESDAY	10:45am-11:45am	MH Studios, Bromham
FRIDAY	10:45am-11:45am	MH Studios, Bromham

COST £8 PER CLASS
BOOKING ESSENTIAL

FOR MORE CLASS INFORMATION PLEASE EMAIL

LISALAMBYOGA@GMAIL.COM

CALL/TEXT: 07504615556 - FACEBOOK PAGE: LISA LAMB YOGA



M | H Studios

- Private Fitness & Wellbeing -
Luxury, boutique fitness and wellbeing studio nestled in the heart of Bromham, Wiltshire
www.mh-studios.co.uk
mel@mhunterpt.com



Group Fitness Classes / Les Mills / 1-1 Private Training / Sports Massage



Lead The Way

DOG WALKING SERVICE
BASED IN BROMHAM

I NOW HAVE ONE SPACE AVAILABLE FOR A LOVELY DOG TO JOIN MY GROUP WALKS

07907995022
FOLLOW ON FACEBOOK
LEANNE.LTW@GMAIL.COM



BEWLEY

FUNERAL DIRECTORS

Our family are here for your family

Our family have been serving Bromham and the surrounding area since 1970.



- 24hr Personal Service • Home Visits
- Pre-paid Funeral Plans

64 New Park St. Devizes
01380 728008

15 Bank St. Melksham
01225 702521

contact@djbeewley.com

www.bewleyfunerals.com



Bromham Post Office

The Clubhouse
Social Centre Car Park

Opening times:

Monday 13.30 - 15.30

Wednesday 9.00 - 11.00



NETHERSTREET BEEF



PREMIUM GALLOWAY BEEF BORN & BRED AT NETHERSTREET FARM, WILTSHIRE



WHAT WE CAN OFFER...

- SILVERSIDE JOINTS
- BRISKET
- RIB OF BEEF
- MINCE & STEWING STEAK
- FILLET STEAK
- SIRLOIN STEAK
- RUMP STEAK
- RIB EYE STEAK
- SAUSAGES
- BBQ BOX

www.netherstreetfarm.co.uk



The Farm Cookery School



COMING UP... IN THE
SUMMER HOLIDAYS

- 4+YRS CLASSES
- 7-9YRS CLASSES
- 9+YRS CLASSES
- 11+YRS CLASSES
- 2 DAY COOKERY CAMPS 11+
- ADULT & CHILD -
COOKING TOGETHER
- 2HR & 3HR BIRTHDAY
PARTIES

www.thefarmcookeryschool.co.uk

Bromham, Wiltshire, SN15 2DS

01380 859478

Get Your

MILK
@ MILE ELM

CALNE, SN11 0NE  fears.situation.observe

 Find us on
Facebook

SELF-SERVICE VENDING MACHINE

Your local farm shop

Self service vending machines

Fresh milk produced from our own dairy herd

24 different milkshake flavours available everyday

Also available, our range of locally sourced goods:

Bacon

Sausages

Ham

Free Range eggs

Butter

Cheese

Home Made Cakes, Savoury Snacks & Pies

Coffee, Hot Chocolate & Tea

Lacock Dairy Ice Cream

Honey

Ramsbury Rapeseed Oil

Bottled Cake Bakes

Reusable, Branded 1 or 1/2 litre glass bottles

**See our Facebook & Instagram Pages
for more info and regular updates**

OPENING NOVEMBER 2022

A secure, 1.5 acre Dog Walking Paddock

MILE ELM, CALNE, SN11 0NE

Open 06.00 - 21.00hrs



Your first step to healthy feet

Feet First Foot Care Services is a foot care clinic that offers services throughout Melksham and surrounding villages. We treat common foot conditions: corns, hard skin, ingrown nails, diabetic feet, verruca, athletes foot, fungal infections and more.

Call us to book an appointment

01225 405 168

6b Littlebrook Courtyard, Bath Road, Melksham, Wiltshire SN12 6LP

Email: info@feetfirstfootcareservices.co.uk

www.feetfirstfootcareservices.co.uk



WILTSHIRE CERAMIC STUDIO

Your local clay makers' space

Parties ♦ Date Nights ♦ Lessons

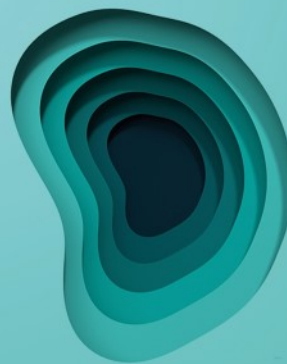
Winter Pottery Workshops



WILTSHIRECERAMICSTUDIO.CO.UK

Stockham Marsh Farm, Foxham

☎ 07543388124



TYMPAHEALTH

Hearing loss?
Ear ache?
Blocked ears?

It could just be *wax*

We can help with that & more...
Book a 30 minute ear & hearing
health check-up today

- * Ear health examination
- * Safe, best practice ear wax removal using micro suction
- * Certified hearing screening test

Call us to book an appointment

01225 405 168





THE WESTBROOK

Open Wednesday to Sunday

Please see our website or our Facebook page for our current Opening Hours and Food Serving times.

To book a table please call us on 01380 850418

www.westbrookbromham.co.uk

LS architectural design

Thinking of extending, converting or replacing your existing home?

With over 25 years residential design experience in the Wiltshire area, we offer professional architectural services at affordable prices.

Call or email today for a free, no obligation, consultation:

 07768 808268

 lsarchitecturaldesign@outlook.com

For more information on our services and projects or to read what our past and present clients think of us, please look us up via our website:

 www.lsarchitecturaldesign.co.uk

MAX MOWERS

SALES • SERVICING • REPAIRS
ALL TYPES OF GARDEN
MACHINERY

STANDARD SERVICE PRICE LIST

ROTARY MOWER	£70.00
SMALL RIDE-ON	£150.00
LARGE RIDE-ON	£200.00
STRIMMER/BRUSH-CUTTER	£60.00
BLOWER/VAC	£60.00
CHAINSAW/HEDGE CUTTER	£70.00

PRICES ABOVE DO NOT INCLUDE REPLACEMENT PARTS OR REPAIRS

07947112194

MAXMOWERS2012@GMAIL.COM

ANGELL MOTORS

CAR REPAIRS & SERVICING

FIXED PRICE SERVICING

- All Makes & Models
- M.O.T. Service
- Diagnostics
- Brakes & Clutches
- Welding & Repairs
- Air Conditioning Repairs
- Volvo Trained Technician
- Towbars Fitted
- Local Collection/Delivery

TELEPHONE: 01225 707140

Email: angellmotors@sky.com • www.angellmotors.co.uk

Unit 4 Strattons Walk, High Street,
Melksham SN12 6JL (rear of Poundstretcher)



LAURA MAYES

YOUR WILTSHIRE COUNCILLOR FOR BROMHAM

Please contact me if you have any Council issues including:

- **Planning**
- **Housing**
- **Education, Children's Safeguarding**
- **Highways – potholes, road schemes, speeding**
- **Fly tipping and waste**
- **Adult Social Care**



I am here to offer advice and support so please get in touch:

Email: Laura.Mayes@wiltshire.gov.uk

Tel: 07855 819343

Facebook: Laura Mayes – for Bromham, Rowde and Roundway

STONEHEATH

FITNESS & THERAPY

Personal Training 1:1, 2:1
& Group Sessions
Fitness Classes, Online Plans
& Coaching
Sports, Deep Tissue
& Pregnancy Massage



Located in Bromham

07870133317

www.stoneheathfitnessandtherapy.com

DEEP BLUE

Pool Management Ltd

Swimming Pools

Hot Tubs

Chemicals

Pool Toys & Inflatables

Hot Tub Service & Repair

Pool Maintenance

Sauna & Steam



Tel 01380 721314

www.deepbluepoolsandspas.co.uk



WAYSIDE LODGES and B&B

Self catering accommodation

Bed and Breakfast plus room only

Short or long term guests catered for

Cosy, modern accommodation

Direct access to private woodland

Flexible bookings – family or business welcome

Tel 07770 774463 or mail@jandlseed.co.uk



The Five Elements Retreats

Based in Bromham on New Road

Offers you a way to relax the mind and body,
in a natural non-invasive way.

Reiki and Animal Reiki

Reiki Drum healing and / or Journey

Ear Candles

Hand Reflexology

Chakra balancing

Oracle card readings

Sound Healing

Reiki training available for all levels

Bespoke healing experiences
and Wellness Days

Contact Trudi on 07810 – 374053

Email: Trudis36@gmail.com

www.thefiveelementsretreats.co.uk



Change and Wellbeing Therapy

cognitive behavioural therapy - hypnotherapy
relaxation - mindfulness - stress management

Face to face appointments now available at:
The Therapy Rooms, 32 New Road,
Chippenham, and in Bromham

anxiety - stress - phobias - chronic pain -
habits - poor sleep

life goals: career - personal life - sports

Call for a chat, or email:

t: 07702 113544

e: heather@northwessextherapies.com

w: www.northwessextherapies.com

“Don’t shiver, We deliver” Seasoned hard wood logs



Call James

01380 850312 or 07970 781828

Most tree work undertaken

GARRY LOTT PAINTER AND DECORATOR



30 YEARS EXPERIENCE
LOCAL TRADESMAN

FOR FREE ESTIMATES CALL
07971 450058

WILTSHIRE DIGITAL

Aerials, Satellite, CCTV, WIFI & more...

With over 15 years combined experience we are fully insured installers of Aerials, Satellites, CCTV, WiFi range access points and much more across the whole of Wiltshire and beyond.



For a free quote contact your local experts
 Phone: 01249 848747
 Email: info@wiltshiredigital.com
 Website: www.wiltshiredigital.com
 Facebook: Wiltshire Digital



Are you frustrated by today's digital world? ...



Kathryn Price
07427 104249

kathryn@ksptechcare.co.uk
 www.ksptechcare.co.uk



You're suffering from 'Gadgetitis'
Stop struggling alone!
Call me and I'll get you comfortable and confident with your tech

LAZY ACRE HOLIDAY LET AND B&B

DEN & CATH FILLIS

LAZY ACRE
 THE COMMON, BROMHAM
 CHIPPENHAM
 SN15 2JJ

01380 850473
 d.t.fillis@hotmail.co.uk



LAZY ACRE
 B&B AND HOLIDAY LET

We are now open for bookings, but will not be offering breakfast for the time being. It is a completely self contained unit so no contact at all. Also ideal for workmen looking for accommodation in the area. Can comfortably accommodate 4 people.



Service covers all aspects of chimney care from regular maintenance to sweeping, camera inspections and testing.

SOOTY & SWEPT

Service Open Fires, Wood Burners, Multi Fuel Stoves and AGAs. Can deal with specific problems such as birds nest removal and cowl fitting.

Competitive rates and a friendly professional service.

Call Will on: 07789 007418

Or email: william-newell@hotmail.com

Happy Paws Dog Walking and Pet Care Services

CARE FOR ANY & ALL PETS!

We offer dog walks, pet visits and taxi services. Based in Bromham and cover surrounding local areas. Fully insured, DBS approved & accredited with The Professional Dog Walkers Association.

We are experienced with both domestic & exotic pets from big to small!

Please contact us with any questions or to schedule a meet and greet!

@happypawdogwalkingandpetcareservices
 @happypawdogwalkingandpetcare
 www.happypawdogwalkingandpetcareservices.com



Emily: 07940 070206 / Suzie: 07568559556
 happypawdogwalkingandpetcareservices@outlook.com

Amanda Phillips Local Mobile Hairdresser

Cut & blow dry - £28
 Gent's cut - £15
 Colours from £35 inc. cut
 Hi lights from £35
 Perms - all inclusive £48



Phone for quote 07889 744727
 amandapagethairdesign@hotmail.com

ILES & VINCENT FUNERAL SERVICES

BROMHAM'S RESIDENT INDEPENDENT FUNERAL DIRECTOR



Classic and traditional funeral ceremony, small and intimate service or no service at all with a direct cremation, we are here to help, guide and support you every step of the way with sensitivity, experience and empathy.

24 hour professional & caring service

The Cornmarket, Warminster, BA12 9BX
01985 220161 (24 hours)
info@ilesandvincentfuneralservices.co.uk



FOREVER



**ECO-
FRIENDLY
ALOE VERA
PRODUCTS**

Drink it,
apply it, rub
it in - aloe
for all!

From your local friendly Forever Business Owner
Caroline Palmer - 07753 677432 - caro@aloe-aloe.org.uk

FREE delivery for local customers

Beautiful Handmade Curtains, Blinds and Soft Furnishings

Free measuring and quotations
Wide variety of pattern books to browse at
Rowde workshop



Caroline Flack 07982 985 925
carolineaflack@gmail.com
Marsh Lane, Rowde SN10 5FA



Paul McNeill – Local Painter and Decorator

Professional and Reliable
Qualified and Insured with 20 + years experience

Tel: 07805500185

Email: pm.painting@outlook.com



KDS JOINERY

Enquiries/quotes email:

kdsjoinery@gmail.com

Facebook: KDS joinery

Instagram: [kds.joinery](https://www.instagram.com/kds.joinery)



Scan here to view previous work



kyle smith
joiner/carpenter

Services offered: Bespoke Joinery - General
Carpentry - Kitchen/Bedroom installation -
Feature wall panelling - Hardwood worktop
installation

BIKED

WILTSHIRE

- ⚙️ Bike repair, servicing and maintenance based in Bromham.
- ⚙️ No job too big or too small!
- ⚙️ Experienced and honest.
- ⚙️ Qualified Cytech and Shimano mechanic.
- ⚙️ Drop-off or collect and return your bike.



0738 587 9831 | www.biked.me

AB Painting & Decorating Services

- Internal and External
- Qualified and Insured
- Free Quotations
- Professional finish and dust free sanding

Adrian Bolwell

Tel: 01380 850080

Mobile: 07962 590710

3 Church Hill, Bromham

Barlow Bookkeeping

Over 35 years' experience in the industry

**Please contact me or visit my website
if you require any assistance**

Tel 07917 410081

ashley@ashleybarlow.co.uk

www.barlowbookkeeping.co.uk



PIANO and CELLO Tuition

Christine Moore

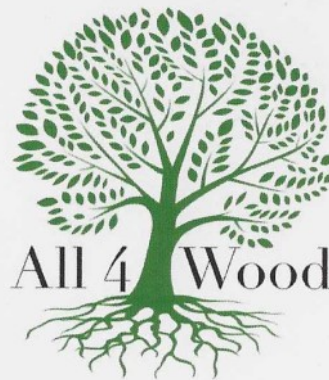
Experienced teacher - Beginners to Grade 8

Living in Bromham

For more information please contact

Tel: 01380 859384

email: cellorunner4@gmail.com



Tree Services

07785 960379

- ◇ Felling
- ◇ Total Removal
- ◇ Aerial Work
- ◇ Pollarding
- ◇ Crowning
- ◇ Stump Grinding

**ATWELL
MARTIN**
ESTATE AGENTS



Thinking of mooving?



Call us on
01249 813 813

www.atwellmartin.co.uk

res.calne@atwellmartin.co.uk