

THE BROMHAM HOOT

NOVEMBER/DECEMBER 2020



NUMBERS YOU MIGHT NEED

Devizes (01380) numbers unless otherwise shown

Parish of Bromham, Chittoe and Sandy Lane			Bromham Parish Council		
Rector	Revd Ruth Schofield	850191 07738 858909	Chairman	Peter Paget	850246
Email:	revrschofield@gmail.com		Clerk	Rosalind Humphries	850874
Associate Priest	Rev Heather Smith	07795 822515	Wiltshire Council All departments 0300 4560100		
Lay Minister	Caroline Culley	850531	Bromham Social Centre		
Methodist Church	Rev Pam Stranks	01249 818923	Bookings	Dave Paget	859492
Email:	pamstranks@gmail.com		Email:	bookings@bromhamsocialcentre.co.uk	
	Jenny Blackman	850580	Chairmen	Malcolm Turner	850204
Roman Catholic Church	Fr Paul Gonsalves	723572		Pete Davis	850792
St. Nicholas School	Office	850391	Owl Manager	Sue Dolman	850671
Village Organisations					
Brownies	Vicky Early	07702 033897	Royal British Legion	Neil Meadows	850360
Busy Kids Pre-school	Judi McKendrick	859389	Short Mat Bowls	George Henderson	01249 815388
Carnival Chairman	Pete Davis	850792	Spye Park Cricket Club	Tom Mornement	850913
Drama Club	Penny Lander	859002	Stitchers	Ann Hannah	850589
Football Club	Pete Wallis	07917 697298	Tennis Court Bookings	Caroline Jones	850260
Footpath Group	Dennis Powney	850979	Twinning Association	Janet Giles	850327
Gardening Club	Sue Skelt	850601	W.I. President	Deborah White	07900 987221
Monday Club Organiser	Caroline Culley	07557 983940	Wives Group	Muriel Sibun	850126
Mothers' Union	Carole Myer	850706	Youth Club Secretary	Rosalind Humphries	850874
Phoenix Club	Jean Richardson	724210	Friends B & SL Churches	Carol Drew	850908

Welcome to your new Village Website

www.bromhamwiltshire.org

Take a
look
today!



- **Sign up** for the latest news and local information
- **Find** contact details for clubs in the village
- **Discover** Bromham businesses
- **Look up** past issues of the Bromham Hoot
- **Explore** local walks and footpaths
- **Delve** into Bromham's history
- **Read** Parish Council agendas and minutes



The BROMHAM HOOT is printed by:

Springfords and Rose Ltd, 35 Eastleigh Road, Devizes SN10 3EQ

WELCOME TO THE BROMHAM HOOT

Welcome to the final issue of The Bromham Hoot for 2020. This is the biggest issue so far, with 28 pages - thank you to all of our contributors and advertisers.

Despite the restrictions some village activities have managed to find new ways of continuing. The Footpath Group still meet every Thursday for a two hour walk following social distancing guidelines from the Ramblers. The Youth Group are meeting via Zoom, and the churches are planning to commemorate Remembrance Day with a socially distanced service by the War Memorial. In this issue you can read about the three Bromham runners who took part in the virtual London Marathon - you might have seen Louisa and Stacey running six times round the village on one of the wettest days of the year.

We would especially like to thank our advertisers, who make the Hoot possible. The first two issues were funded by a Community Grant from S&SE and by donations. We now have to charge for advertising, and we are extremely grateful to everyone who has continued to advertise, and to all the new advertisers - please do support them.

Thank you to everyone who has contributed content - do keep it coming. Please keep telling us what you like, and don't like about the Hoot, and send us anything you think the village might be interested in. Remember, there are many villagers who are not active on social media, and who really appreciate seeing what is going on, especially as the winter draws in and the pandemic shows little sign of ending.

The spectacular picture of a rainbow over Netherstreet on the cover of this issue was taken by Tony Jones. If you have a photo, or a picture that you think would make a good cover, please send it to us. It needs to be high enough resolution to print in A4 portrait format, but a photo taken on a recent iPhone should be fine.

The next issue of the Hoot will be for January / February. We plan to print and distribute this issue just before Christmas. The deadline for content and advertising will be Wednesday December 9th.

The theme for the next issue will - surprise, surprise - be Christmas and the New Year. Why not send us some of your favourite recipes, or tell us about family traditions. Do you have any recommended Christmas Cocktails? We hope we'll be able to include some photos of entries in the Winter Festival - see inside this magazine for more details.

We plan to print the Hoot every two months, so the following issue will be March / April 2021, with a deadline date of Friday February 12th.

BROMHAM HOOT

The Bromham Hoot is created and produced by :

Peter Hindle - Editor; Heather Smith - Content; Tracey Hutchison - Advertising; Caroline Culley

Please email us at: bromham.hoot@outlook.com

BROMHAM GOOD NEIGHBOURS

Our volunteers are still active in the village.

If you need any support over the coming months, please get in touch.

If you need support because you are suffering from Covid, waiting for the results of a test or because you are isolating at home, get in touch.

If you have lost your job and need temporary help with a food parcel, or if you just want to talk to someone, just get in touch.

We want our community to know that there is still help available and people who care.

HOW TO CONTACT US:

PHONE: Caroline Culley - 07557 983940

Email : bromhamgoodneighbours@outlook.com



Bromham Good Neighbours

BROMHAM PARISH COUNCIL

PARISH COUNCIL ZOOM MEETING 12TH OCTOBER 2020

Items carried forward and discussed:

- Traveller's Appeal Refusal/Enforcement Update – In the hands of the Court 9/9/20
- Wyatt's Lake Concerns – On going? WC unable to visit due to Corona Virus. AC update
- Pound Footpath/pedestrian signs/Brown village shop signs – Requested again from CATG
- Chittoe Junction sign A342 – Requested CATG
- A342 50 mph Speed Limit – CATG on going queried again.
- A342 Footpath St Edith's Marsh – Requested again
- Ditch/Grips/ Slow A342 at Roughmoor – Request via WC Highways + JB Ditch/Flooding
- Church Hill Speed Limit – Metro Count SID Quotes (SID Training RH & JS) SID PRICES: TWM Battery operated £2150 + Data collection option £275, Installation £500/day , Message maker £2050 Battery Solar + £625 Data option + £300 Battery optional extras/charger etc. + £254. RH has completed the training course with certificate. Metro Count again requested. It was agreed that purchasing a SID machine to again be considered when the results of the Metro count have been received.
- Seat At Minty's Top – Asters refused -To now be located on the Jubilee Field
- Disabled Parking space at Highfield – Completed by Asters
- Church Yard Extension Gates – Repairs and re-painting on going
- Gullies Hawkstreet/Village – On going programme
- Jockey Lane Road Surface – To be inspected and any work required to be put on work programme
 - * Is Jockey Lane adopted? WC confirmed Jockey Lane is adopted up to 16 Jockey Lane. Repairs requested.

Parish Plan: A remote joint meeting between the Neighbourhood Planning Committee and the Parish Council took place on 29th September. All members of the committee reported on the work and progress that has been carried out since the committee was formed on September 15th 2017. The Meeting was also attended by Vaughn from Place Studio - engaged for their advice and support in Neighbourhood Planning. It was agreed that the PC would produce Terms of Reference for adoption. A further meeting to be held by the PC to discuss the Aecon report presented. The final draft for the Terms of Reference was agreed at the PC meeting 12/10/20.

Entrance to the Millennium Field from the Chantry Car Park: During the summer vehicles were driving on to the field to get the BMX track, barrier posts and a chain across the entrance were considered but it was uncertain if cars were using this entrance. To be put on hold until the Spring.

Allotments: One plot remaining – if interested please contact the Clerk.

Highstreet Carpark Bus Shelter: It was agreed to accept the quotation to re-treat all timber except the oak posts and paint the guttering.

Cemetery: It was reported that some ornaments from a grave have disappeared.

Churchyard Extension: The three timber rustic seats require replacing. Price to be obtained.

Financial Statement 30 Sept.20: Current account £28936.04 which includes £5237 from the Neighbourhood Grant being held by the PC. The deposit account which hold village funds £22789.84. Post Office and Lloyds accounts £1322.66

Planning Applications received:

- 20/08510/FUL 9 Durlitt Road. Creation of first floor accommodation in loft space including dormer windows. New Porch to front door
- 20/08682/TPO Walnut tree House, 30 The Pound. Walnut tree crown reduction by 4 metres.

Other matters discussed:

- Bungalow residents parking at Highfield to the rear of Angel House – spaces are being taken up by Highfield residents leaving insufficient spaces for residents and their visitors. Asters have been contacted for notices.
- Abandoned car on the Pound allotment footpath: reported to the police. A notice to be erected at the end of Jockey Lane- 'No unauthorised vehicles beyond this point' Apparently cars following their sat nav are directed this way.
- The light on the Pound allotment footpath has been replaced and is now working again.
- Air Ambulance Clothes Bank – after much discussion it was decided that the PC would give a donation rather than have the bank situated at the Social Centre.
- Defibrillator at Collins Farm Shop: the case requires attention due to water in the cabinet. It was agreed to have a roof put over the cabinet. Many thanks to Sue Skelt and the volunteers who check the machines weekly. The 5 machines are located at Hawkstreet, Netherstreet Kiosk, Hawkstreet Kiosk, The Social Centre and Collins Veg Shop.

NEW BROMHAM WEBSITE – going live Friday 16th October. The website has been updated to conform to new legislation. It will be easier to navigate. Any groups wishing to be included please contact the Clerk or Webmaster. The name remains the same www.bromhamwiltshire.org. Look out for the adverts.

BROMHAM CHURCHES

Dear Friends,

St Nicholas church is open for Sunday worship. We are also open twice a week for private prayer, so please do come in (on Tuesdays and Fridays between 10 and 4), enjoy the peaceful atmosphere and take time to think, meditate or pray.

I thought you might like to hear what we are doing differently to keep everyone as safe as we can from the virus.

As you come into Bromham church, there is a log sheet inside the door on the left. Please sign in and use the hand sanitiser. Instead of signing in, you can use the QR code with the NHS Covid-19 App.

There are post-it notes on some of the pews, and we ask that you sit in one of those places. This keeps us all two metres apart. In our services, we follow a one-way system around the church, so that we're not getting too close together. We're wearing face coverings inside the building, with two exceptions: those who are exempt for medical reasons, and also the ministers and readers who are reading from the front during services – it makes it so much easier to hear what's being said, and we are far enough away to be safe.

We are holding a short Remembrance service together with the Methodist Church outside around the war memorial at 3pm on November 8th. Please gather on the High Street, and make sure that you keep 2m away from other households.

The times of services in November and December are below. If these change, we'll put the changes up in the church porch and on our Facebook page. We hope to film a carol service and put it on YouTube, so we can all sing along at home. There will also be a Christingle service outside – we'll make our Christingles at home and meet outside church to light the candles and say a prayer.

If you would like to know more, do get in touch. We'd love to pray for you, so drop any prayer requests into the box in the church porch.

Revd Ruth

Church Services for November & December

Sunday 1st Nov	10:00 am	Holy Communion (CW)	Bromham Church
Sunday 8th Nov	8:00 am	Holy Communion (BCP)	Sandy Lane Church
	3:00 pm	Remembrance Service	Bromham Church - Outside
Sunday 15th Nov	8:00 am	Holy Communion (BCP)	Bromham Church
	10:00 am	Holy Communion (CW)	Bromham Church
Sunday 22nd Nov	8:00 am	Holy Communion (BCP)	Sandy Lane Church
Sunday 29th Nov	10:00 am	Holy Communion (CW)	Bromham Church
Wednesday 2nd Dec	6:30 pm	Christingle	Bromham Church - Outside
Sunday 6th Dec	10:00 am	Holy Communion (CW)	Bromham Church
Sunday 13th Dec	8:00 am	Holy Communion (BCP)	Sandy Lane Church
Saturday 19th Dec	7:30 pm	Lessons and Carols	Bromham Church
Sunday 20th Dec	8:00 am	Holy Communion (BCP)	Bromham Church
	10:00 am	Holy Communion (CW)	Bromham Church
Thursday 24th Dec	4:00 pm	Crib service	Bromham Church
	11:30 pm	Midnight Communion	Bromham Church
Christmas Day	8:00 am	Holy Communion	Sandy Lane Church
	10:00 am	Holy Communion	Bromham Church

Look out for "Churches of Rowde and Bromham" on Facebook and YouTube.

VILLAGE ORGANISATIONS & ACTIVITIES

Brownies

Sadly we have had to make the very difficult decision to close the local Brownie Unit. If anybody was interested in their daughters joining Brownies, aged 7-10 years old, lots of the local groups are continuing to meet virtually. The best thing to do would be to register your daughter's interest on the Girl Guiding website; that way you can choose a unit that works around other commitments:

<https://www.girlguiding.org.uk/information-for-parents/register-your-daughter>

If anybody would like any further information, please email me on Vicky_BrownOwl@btinternet.com

Bromham WI

Unfortunately in line with the ongoing restrictions and directive from WI House we are still unable to meet.

This has been a highly difficult and frustrating year, especially as we had some excellent speakers lined up for you. The Committee has taken the decision to reschedule these into next year. We will keep you all updated as soon as we are permitted to run meetings again.

In the meantime, should anyone have any queries please do not hesitate to contact Deborah White on 07900 987221.

Bromham Football Club

The season has started ... we are, as they say, taking it (literally) one game at a time. Covid precautions are in place, balls and goalposts are being sprayed with disinfectant - its all very strange but at least games are being played and goals being scored.

We've also nearly finished the new dugouts. We do need to weatherproof the roofs (spare felt much appreciated if anyone has any) but aside from football use, they're a great place to sit and admire the view up to Roundway. We have designed them deliberately so anyone can use them so please feel free.

More detailed news next issue

We are fast approaching our 125th anniversary – the club being founded in 1897 by Harry Amor and Arthur Powney. We would love to get more teams set up at younger age groups. If you are interested, please contact Peter Wallis on 07403 044512.



Bromham Youth Club

Although we can't get together in person at the moment, Bromham Youth Club are currently meeting virtually on Wednesday evenings at 7pm during term time.

Last week we had our first virtual quiz which was a big success, and well done to Alex and Hannah who won. This week we are hosting virtual Halloween Bingo with lots of spooky prizes up for grabs.

During November we are planning to host more events including a Ready Steady Cook challenge.

It was brilliant to see some of our members again, even if only online at the moment.

Bromham Footpath Group

The Bromham Footpath Group are following guidance from The Ramblers and are still meeting every Thursday morning at 9.00 am for a socially distanced ramble in good company. Of course, the restrictions mean that we can't end the walk with our usual coffee and cakes.

We are blessed with such a variety of footpaths and bridleways on our doorstep that we don't need to go gallivanting. Why don't you join us? There is no formal membership and no fees - just turn up on a Thursday morning. Our two hour walks are usually no more than 5 miles but if that is too much or you have limited mobility, there is a shorter walk option.

The 'AMBLING WALK' also meet every Thursday, leaving from the Social Centre car park at 10 am.

We walk gently and locally for an hour; socially distancing and (mostly) avoiding stiles. We then split into groups of six and have coffee at each other's houses or sometimes at The Greyhound. It's a very friendly & supportive group and anyone is very welcome to join us.

2020 LONDON MARATHON PASSES (VIRTUALLY) THROUGH BROMHAM

Unfortunately due to the COVID-19 pandemic, the London Marathon could not go ahead - so the decision was made to make it virtual for the first time ever. Up to 45,000 runners were invited to take part and were given 23 hours 59 minutes and 59 seconds to complete the 26.2 miles - and three of them were from Bromham. Here are their stories:



Louisa Tatton-Bennet and Stacey Wall, ran six laps of the village to make up the 26.2 miles. They were originally going to run the London Marathon this year for its 40th anniversary, fundraising for Blind Veterans UK, where Louisa has worked since 2017. Louisa says: "We were only told seven and a half weeks before that the virtual marathon was happening so we didn't have very long to train but we love a challenge! We were determined to end 2020 on a positive note and for such a wonderful charity".

Louisa and Stacey started running together about five years ago and have completed many running challenges over the years, building up their stamina for the marathon. Louisa says: "I couldn't even run 280 yards without stopping! We started off doing the Couch to 5k challenge and now five years later we've done a marathon! We couldn't have done it without each other".

On the day of the marathon, Louisa and Stacey were cheered on by their friends and family. Louisa says: "Everyone came out to support us and cheer us on at a social distance. It rained for three days before and throughout the entire race. We dodged floods, with detours over cabbage fields and verges! It was the most enduring physical challenge we have ever done but also the most wonderful experience and meant so much to us for many reasons".

So far Louisa and Stacey have raised over £5000 for Blind Veterans UK. If you would like to help them raise even more money, their fundraising page is here: <https://www.justgiving.com/London2020StaceyLouisa>



Catherine Body did it differently. A member of Devizes Running Club, she started by completing the Devizes Half Marathon in under two hours, then swapped her race number for the Virtual London Marathon and carried on running down the canal to Melksham and finished with the ParkRun in King George Park.

She says: "It was such a miserable day, I don't think I've ever run in such atrocious conditions for so long.

My husband & children met me several times down the canal then my son, Alex, ran me in from Bowerhill to King George Park before my daughter, Hannah, took over for the final 5km. Running friends also popped up here & there to support. I finished in a time of 3:56:58, so not a PB (personal best) but super chuffed with another sub-4 hours in those conditions. Running without the usual crowds, bands, hype & finish line was a very different experience, but certainly one I won't forget in a while! "

FROM THE METHODIST CHAPEL

Hello. My name is Pam and I'm the new Methodist minister at Bromham Methodist Chapel. We've recently returned to this area of Wiltshire after ten years of living in Tavistock, Devon. In one sense, we have come home. Amidst all the challenges, heartaches and uncertainties of this time; home is where many of us have been these past months.

A big part of my role is getting to know people, which has proved to be quite difficult given all the restrictions and guidelines but I've been grateful for the times I've been able to meet one or two people, chat with Revd Ruth and of course I've never spent so much time on the phone or zoom! As we begin the closing months of 2020, we realise that, in our churches and in our community, our Remembrance commemorations and Christmas celebrations will be rather different this year. The words on the cover of the last 'Bromham Hoot' reminded us that "We are stronger together" and I pray that through the coming weeks we will know peace and wisdom as we journey step by step along unknown paths.

With thoughts and prayers

Pam

Rev Pam Stranks

No Bells on Sunday

When Lockdown was declared in March 2020, church bells fell silent all across the land for the first time since the second World War. Ringers everywhere were banned from practising their art.

At Bromham we tend to leave our bells in the mouth up position with the exception of the tenor which needs to be down for the clock to strike, but, as we had no idea when we would next be able to ring, all the bells had to be lowered to make them safe. This we did, Paul Jordan and I, on the first Sunday morning, lowering two at a time.

Although there were no services held inside the church, the first of the online Zoom and YouTube services were starting up and so, for the next few weeks, Ruth our Rector decided we should mark the start of these services by chiming two of our six bells. This duty was performed by Paul and Karen Jordan who are relatively new to ringing and being members of the same household were allowed in the tower at the same time.

As the guidelines began to change and become more stringent the Church of England banned all ringing until the beginning of July when the Central Council of Church Bell Ringers allowed us to return. However we had to stick to very rigorous sanitizing and social distancing rules and were limited to just 15 minutes of ringing for Sunday service. I drew up a risk assessment and list of instructions and canvassed our ringers, many of whom were understandably reluctant to take part. We measured the distances between the ropes both laterally and diagonally and worked out how many and which bells we could ring. The most we can manage with Karen and Paul on adjacent bells is four with myself and Chris Farnsworth. Otherwise it is three. This rather limits our repertoire of changes but at least we are reminding the village that it is Sunday and the church is open for business.

On October 9th a special service of remembrance was held for all the Bromham folk who have passed away since Lockdown and we were pleased to have been asked to ring the bells half muffled. This involves attaching leather and pads to one side of the ball of the clapper so that alternate strokes echo softly. We usually ring the bells like this for Remembrance Sunday. This year will be the first since I took on the role of Tower Captain in 2005 that we have not rung a half muffled quarter peal on Remembrance Sunday, but we will do our best on 4 bells. Maybe next year. We live in hope.

Linda Drummond-Harris

Vegetable and lentil soup

1 large onion, finely chopped
2 carrots, diced
1 leek, finely chopped
1 medium parsnip, diced
2 garlic cloves, crushed
1.2 litres vegetable stock
225g red lentils
1 x 400g can tomatoes with their juice
Few sprigs of thyme and oregano
1 bay leaf
Salt and freshly ground black pepper
2 tbsp finely chopped parsley

- Place all vegetables, stock and lentils into a large saucepan. Add the thyme, oregano and bay leaf.
- Bring to the boil and then simmer for half an hour or until the vegetables are cooked and the lentils are soft. Remove the bay leaf.
- Blend or whisk until smooth. Season with salt and pepper to taste. Sprinkle the parsley on top before serving.

WINTER FESTIVAL

Christmas is likely to be very different this year for many of us, so to keep spirits up and keep us smiling, we would like to encourage as many people as possible to create a 'Winter/Christmas' themed display in their window or outside their house during the month of December. The Christmas lights in Bromham are always lovely to drive round and see, but this year, we want to make it even better! To get as many people involved as possible, we'd like to run a competition. There will be prizes for the best overall displays as voted by the community which everyone can enter simply by just making a display. There is no entry fee but we would kindly ask for a donation of any size which would go to St Nicholas School PTA and Bromham Good Neighbours. So..... if you want to be the winner of 'Best in Bromham Christmas 2020' get your creative heads on now!! Only rule is some lights of some kind must be incorporated somewhere, but it doesn't have to just be about the lights- the more imaginative and creative, the better.

To enter, simply email your name and address to bromhamgoodneighbours@outlook.com by 5th December and mention **WINTER FESTIVAL**.

Collection boxes will be around the village will be available for any donations or you can donate by Bank transfer to 30-92-63 account number 01311884 (St Nics School PTA- any donations will be shared between Bromham Good Neighbours and the St Nicholas School Bromham PTA to benefit the whole village). Please state **WINTER FESTIVAL** as a reference.

More details to follow soon on the PTA and BGN facebook pages and posters around the village!

RATED A GOOD SCHOOL BY OFSTED – APRIL 2017

**St Nicholas C of E VC Primary School
Open Day 2020**

"There is a real sense of community here and we love that we feel part of it. A wonderful school, where everybody cares for one another; both pupils and teachers." Source: A parent to Ofsted April 2017



Are you applying for a primary school place for September 2021?

**We are holding open days by appointment
(for one family at a time)**

Please phone or email the office for more details and/or to book and appointment.



St Nicholas C of E VC Primary School

Contact us on 01380 850391 or admin@st-nicholasvc.wilts.sch.uk

Ooops !!



For those of you that haven't already seen it on Facebook (Spotted In Bromham) - thank you to Dennis Powney for the picture of a very lost visitor to Bromham!

"Sat-Nav says - You have arrived at your destination."

"Should have gone to SpecSavers!"

"Are you sure that this was the way to Barnard Castle?"

Or do you have a better caption?

Alfie Wiltshire 1922 - 2020

Alfie was born in 1922 at Stert Valley House near Devizes. He started off his schooling at Stert Primary school, where there was only one classroom toilet which was a little shed with a bucket! Alfie left school at 14 and went to work for Burt's the chemist for 25 pence a week. He walked 2 miles there and two miles back home each day. He mixed sugar with water to go in the medicines and delivered them to Roundway House and other places round Devizes.

Alfie was called up in 1942, three months before he met his wife Mary at a dance at the Cross Keys Inn in Rowde. He was posted to Holmsley South near Brockenhurst, then Detling Aerodrome in Kent. Alfie and Mary were married by special license on 30th June 1943 at Bromham, a marriage which lasted 71 years. Alfie and Mary moved to Bromham in 1947 and their son, Alan, was born in 1948. Alan married Denise in 1970 and they had two children Ali and Andrew. Ali's son, Olly was born in 2004. Alfie thought a lot of his family.

Alfie did a huge range of jobs over the years including working for British Rail, then GWR, which was all steam trains. He worked in the goods shed unloading goods from trucks on to lorries delivering parcels to shops and surrounding villages. He made a spring for Concorde at Crosses spring factory, then moved to Harris's bacon factory.

In 1960 he was elected Branch Standard Bearer for Bromham British Legion. He went to parades at the Royal Military Academy Sandhurst, the Festival of Remembrance at the Royal Albert Hall in London, as well as more local parades at Warminster and Tidworth. In 1977 to celebrate the Queens Silver Jubilee he marched from Bird Cage Walk to Horse Guards Parade in London. Alfie was Branch President in 2013.

In 1980 Alfie joined Bromham Troupers and took part in plays and pantomimes for 28 years.

Alfie was devoted to Mary and cared for her with amazing patience in later years. He moved to Angell House after she died and joined Monday Club, which he loved. Alfie loved Bromham.



We would like to thank everyone in Bromham who have either posted messages on Spotted Bromham or sent us cards with lovely messages remembering Alfie my Dad. We were amazed at the number of people who stood out to pay their respects as the hearse drove around the village and especially the residents of Angell House where he lived for over 5 years. He loved Bromham and will be missed by us all.

Alan, Denise and Family

Mum's Chicken Soup

*2 chicken breasts on the bone - skin removed
1 onion quartered and then sliced into thin slices
2 celery stalks, rinsed and sliced into small pieces
3 carrots, peeled and sliced
1 swede, peeled and cubed
1 bunch fresh dill, rinsed
Salt and pepper to taste
2-3 tablespoons olive oil
1 pound of baby spinach*

- Heat olive oil in a large heavy stockpot on a medium heat. Add the chicken, lightly brown on top and bottom and remove from pot.
- Add onions to the pot and season with salt and pepper. Cook until tender and lightly golden.
- Return chicken to the pot and add enough water to cover chicken by about 1 inch.
- Bring to a boil and add all the vegetables including the dill. Simmer and cook with the pot half covered for about 30 minutes (or until all the vegetable are fork tender). Turn off the heat.
- Remove the chicken and let cool until you are able to handle. Remove the dill.
- Shred the chicken and return to the pot. Season, and add the spinach. The heat from the soup will cook the spinach.

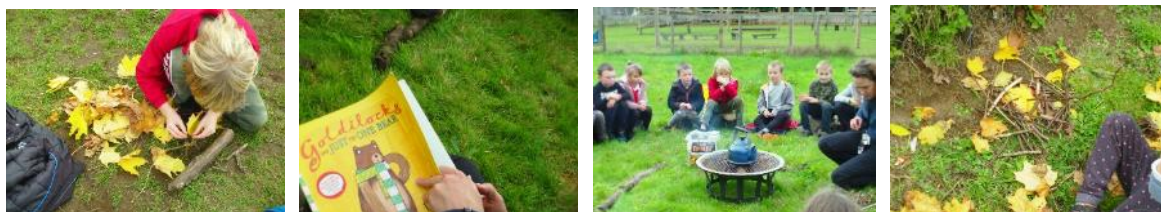
St. Nicholas C of E (VC) Primary School



Hello everyone,

As you can see from the photos below the children have enjoyed being back at school and in particular our wonderful outdoor spaces which they have used for a variety of activities from storytelling and learning about history to creating natural art.

It has been such a delight to see them all returning to their learning and their friends. There is no doubt that we are still living through incredibly challenging times but to see the resilience and positive attitudes of the children on their return to school has been heart-warming and uplifting.



Although we have some new and different routines in school currently, we have also retained many of the things we usually do. We have welcomed Reverend Ruth into school each week to run worship sessions and also to run our recent Harvest celebration. Families were able to donate food items to be taken to a local food bank (after being quarantined!) and put our term's theme of Hope into action. We have also been fortunate to welcome back individual members of our Open the Book group who have engaged the children with their retelling of Bible stories each Wednesday morning.

We have re-commenced sports coaching sessions with socially distant games and activities, forest school sessions and music lessons (all with safety measures in place). Our PTA committee have recently run a 'Pumpkin Raffle' and raised an amazing £166 so huge thanks to them for their creativity and resourcefulness in raising funds for the school despite less than ideal circumstances.



Happy half term from everyone at St. Nicholas Primary School.

Support St Nichs when you shop at Amazon

It is now easier than ever to raise donations for **St Nicholas School PTA** through **Amazon** at no cost to you!

AmazonSmile allows you to enjoy the same wide selection of products, low prices, and convenient shopping features as on [amazon.co.uk](https://www.amazon.co.uk). The only difference is that when you shop through smile.amazon.co.uk, Amazon will donate a percentage of your purchase price of eligible purchases to the School PTA.

- Simply go to the smile.amazon.co.uk website, click on 'Get Started'
- Enter your Amazon email and password
- Next, type **St Nicholas Ce(vc) School PTA** in the box provided and click 'Select'
- Finally, tick the box stating 'Yes, I understand that I must always start at smile.amazon.co.uk to support St Nicholas Ce(vc) School PTA'
- Start shopping!

Remember to go through smile.amazon.co.uk in order for the school and your children to benefit from your purchases.



The children have loved being back at Busy Kids, seeing their friends again and enjoying a range of activities.

We have spent this term focusing on our topic of Autumn; the children have been busy exploring our outdoor environment and looking at the changes autumn brings within nature. The children have really loved going on walks around the village fields, looking at the vegetables being harvested, watching the leaves fall and finding lots of new colours. We have also investigated pumpkins, how they smell, taste and touch; enjoying pumpkin popcorn, carving pumpkins and enjoying pumpkin themed activities.



Our November topic is Celebrations, learning about why, when, where and how they are celebrated and helping children to understand different cultures and what is important to others. We are focusing on; Diwali, Remembrance Day, Bonfire Night, Children in Need and St Andrews Day.

2020 BROMHAM PUDDING RUN

It is with great sadness that, the Pudding Run team and St Nicholas School PTA have made the decision to cancel the 2020 Pudding Run. We know that this will come as a massive disappointment to many of you, especially after the uncertainty, stresses and strains of the last six months.

However having monitored the progress of the pandemic over the course of the year and taking into account the current stage of the Covid-19 pandemic, it is becoming increasingly clear that the relaxation of the lockdown measures coupled with the increased movement of people, as they begin to return to work, schools, universities etc, is starting to give rise in the daily R-rate and the number of daily cases.

As Event Director and in consultation with the PTA, the decision whether to go ahead with the event was paused earlier in the year in the hope of giving it every opportunity to be held. However, having now considered all the evidence and guidance it is with regret that the decision has now been made to cancel this year's event.

This is obviously very upsetting for everyone involved, but a decision, which we believe to be the correct one for all involved, and for the community. The safety of everyone involved with the event is of paramount importance to the Pudding Run team. We are very lucky to have dedicated and loyal participants, supporters, volunteers, sponsors along the whole community here in Bromham, who turn out year after year in support and to introduce unnecessary risk would be the wrong decision.

As well as being a community event and fun for the participants, the Pudding Run is the biggest annual fundraiser for St Nicholas School. Whilst the PTA are exploring different fundraising ideas, the void in funds left by the cancellation of the Pudding Run will be very difficult to replace. Therefore, the PTA would very politely and respectfully ask anyone or any business who is able to do so, please make a donation to the PTA for the school. Remember that all funds go directly toward benefitting the pupils attending the school.

It is not all negative; we at Pudding Run HQ are still very much focused on its continued success. The Team are already actively planning how to make up for this year's absence, and we hope to stage something even greater. Watch this space, as soon as we have the exciting details - we will update you.

Small changes, make a difference

How many of us watched David Attenborough in Blue Planet II and gasped in shock at the scene where the baby albatross is fed bits of plastic by its parent who mistook it for food? How often do we walk around our beautiful countryside in Bromham and see small plastic sweet wrappers, plastic drinks bottles or loose plastic bags spoiling our surroundings?

Unfortunately, we have developed a throw away culture around single use that is not healthy for society or for the oceans. Does seeing the plastic crisis in the sea, plastic on our beaches and plastic all around our countryside provide a catalyst for us to snap out of this destructive pattern? It did for me.

What did I do about it?

- read books about 'How to give up Plastic' - one by Will McCullum is a good start.
- went shopping for metal water bottle, reusable coffee cup and fold-away bags
- checked my bathroom products for microbeads and replaced them with alternatives
- made a plan to shop for food where plastic is minimised, Devizes market, whole food shop, farm shops
- refused single use straws, cutlery (I carry a reusable spork and metal straw)
- use bamboo toothbrushes and toothpaste in glass jar with no microbeads
- refilled my empty plastic bottle with bodywash from the independent Little Eco Shop in Devizes

Is it more expensive?

- Filling water bottle from tap, zero cost
- Using 'keep cup' for coffee, small discount on normal prices
- Fruit and veg from the market is much cheaper than supermarket
- Bamboo toothbrush and toothpaste slightly more than plastic alternatives, but worth it.
- Body wash no more expensive than I would normally pay

Will it make a difference?

Yes, as individuals we can change our behaviour, limit our use, even a little bit; and help reduce the amount of plastic out there. When you next drink coffee, or tea from a single use cup, understand that while you will only use it for a matter of minutes, it will not break down for hundreds of years. Maybe consider a reusable cup for take away, or, sit down, relax and have a china cup that can be washed and used again.

On Oct 1st, a ban on single use plastic straws and stirrers came into effect, so slowly the government is moving in the right direction and waking up to the need to act. As individuals we can get ahead of the game and choose to act by reducing our use of plastic now. It's not difficult to replace plastics, it just needs a bit of planning.

I have found different and interesting places to shop, which also supports my local independent shops and traders. Check out the Little Eco Shop, Wharfside, Devizes and The Healthy Life, Brittox for new and plastic free products. Visit our local farm shops for plastic free vegetables. V&P Collins sell Ecover cleaning product refills.

Eleanor Green

BROMHAM THEN & NOW



Church Street, Bromham in the 1860s. On the right is the church wall, the present day village shop is in the distance. On the left is the wall of the burial ground, then Mary Ann Gee's grocery shop, then the Black Horse Inn; a barbers pole can be seen just before the present day Porch House, which was the Red Lion Inn until 1840. This row of thatched cottages was demolished in 1868/9. Part of the cobblestone path can still be seen at the road junction.



The mansion house at Hawkstreet, Bromham, sometimes known as the old manor, but actually it was never a manor house. Built for Edward Eyre in 1604/5 and demolished some 350 years later. Pictured here in 1967, just before demolition. The house was replaced by a bungalow which in turn has, very recently, been replaced by a house, number 64 Hawkstreet.

Dennis Powney

Bromham Parish Neighbourhood Plan

....your villageyour sayyour plan

Since the last edition, the NP steering group have been running an online survey on public rights of way and active travel routes within the Parish. We have had a flurry of responses and what came across was how important all the routes are to us. It was clear that we all value our footpaths for exercise, the views, as connections, for safety (avoiding the non-pavemented roads) and for meeting others.

The Route that generated the most interest and comments was, not surprisingly, *'the allotment path'*, connecting The Pound with the Village centre. It was cited as the most important path in the village, by numerous respondents for its connectivity, all weather surface, openness, views and safety. It has been in use for over 40yrs and many generations of families have used it as a route to and from the school. Some improvements to the surface and extra lighting would make this the best path in Bromham.

Close behind for popularity of comments was bridleway *'Stoney Lane'*, which, despite the section of slippery cobbles and overgrowth, did not deter us from using this path to connect to Chittoe, Westbrook and beyond. This route was special because it evoked memories from childhood and past history.



Also, around Bromham we have our informal paths that have been in use for decades. They have become part of our village life, serving as connections and for daily exercise offering safe alternatives to the road for access to school/busy kids and allotments. Everyone valued their informal paths for the amazing views and as a place to meet others.

If you want to see more detail, the reports on Routes, Bridleways and Informal Paths are available here:

<https://bromhamnpsg.org/about/resources/library/>

If you want to get in touch with us directly, about this or any other neighbourhood planning related matter, please e mail us at: bromhamnpsg@gmail.com or through the web page <https://bromhamnpsg.org/contact/>

Additionally, through Bromham Parish Council Clerk: rosalindjhumphries@gmail.com

New for December, boxes in the Church Porch and the Village Shop where you can leave any written feedback for the steering group.

Catherine Read (Chair Bromham Neighbourhood Plan Steering Group)

Bromham Parish Neighbourhood Plan

....your villageyour sayyour plan

What buildings or features do you think help make Bromham distinctive?

We have listed buildings, such as Porch House, Nonsuch House, Moore monument in the Churchyard, the Lock up, High Street, plus our Conservation Area that have protection. However, I am sure there are other interesting buildings, features such as signs, gates, post boxes or features with links to local history or important people that are particularly interesting and we would like to be preserved.

The list could go on but we need to have your ideas because we can use our Neighbourhood Plan can give these some protection in the future.

What we can list is very open, but there are some national criteria that have to be met. The criteria are listed here:

Criterion	Explanation and examples
Rarity	This can include unusual assets such as cast-iron bridges and traditional signage or more common ones of unusual architectural style or materials.
Representativeness	May be representative of a particular architectural period, architect, movement, company or group of its time, for example Quaker, railway, Victorian and industrial.
Architectural interest	Of importance in its architectural design, decoration or craftsmanship; important examples of particular building types, materials and techniques (e.g. buildings displaying technological innovation) and significant plan forms.
Townscape/Landscape value	Key landmark buildings or structures and buildings that strongly contribute to a view or roofscape vista. Valued open spaces, (including designed landscapes, streets, squares, parks, gardens, amenity and green spaces), walls, fences, railings, street surfaces (including cobbles, setts and grass verges). Street furniture (including signposts, streetlights, benches, post boxes and telephone boxes).
Group value	Groupings of assets with a clear visual, design or historic relationship (including farmyards, terraces, group form and layout), contribution to street scene, roofscapes and perception.
Artistic interest	An asset with artistic interest exhibiting some degree of creative skill (including sculpture, painting, decoration, advertisements, memorials, gates, railings, door surrounds, finials and signage).
Historic association	Associated with an historical person or event of acknowledged note (including important local figures or events, for example landowner, commemorative event, charity, ecclesiastical or other community group and former resident). Highly unlikely this would apply to assets associated with a living person.
Archaeological interest	There may be evidence to suggest that a site is of significant archaeological interest.
Other? Extra?	There may be some completely new other, or additional, factor thought to be of significance.

If you want to suggest something, please cut out this page, complete and send back the form overleaf.

Bromham Parish Neighbourhood Plan

LOCALLY VALUED HERITAGE ASSETS

Name and location of your suggested building or feature:

How does your suggestion meet any of the following (which can be more than one)?

Criterion	Explanation
Rarity	
Representativeness	
Architectural interest	
Townscape/Landscape value	
Group value	
Artistic interest	
Historic association	
Archaeological interest	
Other? Extra?	

Please return completed forms to the boxes in the Church Porch or the Village Shop.

The form can also be e- mailed to us at: bromhamnpsg@gmail.com

Complete and send one form for each separate suggestion.

Sending a photo or two would also help.

You will also find a copy of the form on our website <https://bromhamnpsg.org/>

Pastel Painting Workshops at Poppins

I'm delighted to announce that my pastel painting workshops are running again - so if you have always wanted to learn how to draw and paint with soft pastels, or would like to improve by discovering new techniques then please do get in touch with me. I shall continue to offer one-to-one lessons at the same price as group lessons whilst Covid-19 restrictions are still in place.

Choose from Still Life or Techniques which will either be in the conservatory or greenhouse, or Landscape which will be outdoors painting in the vicinity of Roundway Hill.

I shall continue with this throughout the Autumn and Winter whilst weather allows, to capture the fabulous colours and tree structures. From Spring I will be starting a new garden painting workshop from our home.

The price of £445 includes 6 sessions weekly lasting 3 hours each, a set of specifically chosen Unison Colour pastels which reflect the colours of our local landscape and a fixative spray. I will provide pastel paper, boards easels as required for each session although you will need a sketch book and sharpie. I also offer individual art tuition at £50 per session of 3 hours. This can be tailored exactly to your needs whether it is learning to draw or use pastels for beginners/improvers/advanced. I also have gift vouchers available to purchase.



All my workshop information can be found on my website, www.cathypearce.co.uk

Please do follow me on Facebook and Instagram as Colour Shed by Cathy Pearce for regular updates on paintings available, events and workshops.

Poppins, 73 Netherstreet, Bromham SN15 2DW. Phone 01380 859887/07731 476760

Email: enquiries@cathypearce.co.uk



THE FARM COOKERY SCHOOL

Netherstreet Farm, Bromham,
Chippenham, Wiltshire, SN15 2DS
www.thefarmcookeryschool.co.uk



WEEKDAY 'CREATE YOUR OWN CLASSES' £10 PER HOUSEHOLD

Book online for these hour long Virtual Cookery Classes. You will receive an Ingredients Guide detailing all of the options so that you can create your dish exactly to your tastes.

Global Flavours 7pm – 8pm

Friday 4 th November	Moroccan Tagine	Friday 13 th November	Indian Curry
Weds 18 th November	Thai Curry	Thursday 26 th November	Moroccan Tagine

Masterclasses 12pm – 1pm & 7pm – 8pm

Weds 11 th November	Batch Cooking	Tuesday 24 th November	Soups & Breadsticks
Monday 16 th November	The Power of Food – cooking for a Healthy Body and Mind		

SATURDAY LEARN TO COOK CLASSES £15 PER HOUSEHOLD (1.5 HOURS)

Book online for these slightly longer Virtual Cookery Classes that are perfect for Chefs of all ages. You will receive a Shopping List and Running Order prior to the class

Saturday	14 th Nov	Homemade Flour Tortillas, Burritos & Brownies	3pm – 4.30pm
Saturday	28 th Nov	Creamy Fish, Meat or Veggie Pie & Festive Gingerbread	3pm – 4.30pm

To book go to the website www.thefarmcookeryschool.co.uk or call 01380 859 478

Class Guides will be sent out 1 week prior to the class and the link to join will be emailed on the day

The Greyhound, Bromham



OPENING TIMES

MON - TUE: CLOSED
WED - THU: 10:30 - 21:30
FRI - SAT: 10:30 - 21:45
SUN: 12:00 - 18:00

FOOD SERVED

WED - SAT: 10:30 - 14:45
AND 17:00 - 20:00
SUN: 12 - 16:30



**NOW OPEN FOR BREAKFAST, TEA
AND COFFEE
(WEDNESDAY - SATURDAY
FROM 10.30AM)**

Why not pop in for a morning cuppa too?

TAKEAWAY MENU

Now including breakfast, Wednesday to Saturday 10:30 am - 1 pm

Lunch & Dinner served Wednesday – Friday 12pm – 2.30pm then 5pm – 7pm

And don't forget our Sunday Roast, served every Sunday from 12 noon - 3pm

CALL US ON 01380 850241

TO BOOK A TABLE OR ORDER YOUR TAKEAWAY

Keep an eye on our Facebook page for updates

The Gallery at Poppins
73 Netherstreet, Bromham

We have a wide range of
pastel paintings and ceramics
by Cathy and Nick Pearce.
All work is available to
purchase.

Give us a call if you would like
to come and have a look.

01380 859887
07731 476760

MAX MOWERS

SALES • SERVICING • REPAIRS
ALL TYPES OF GARDEN
MACHINERY

STANDARD SERVICE PRICE LIST

ROTARY MOWER	£70.00
SMALL RIDE-ON	£150.00
LARGE RIDE-ON	£200.00
STRIMMER/BRUSH-CUTTER	£60.00
BLOWER/VAC	£60.00
CHAINSAW/HEDGE CUTTER	£70.00

PRICES ABOVE DO NOT INCLUDE REPLACEMENT PARTS OR REPAIRS

07947112194

MAXMOWERS2012@GMAIL.COM



RMD & Associates

— WILLS & LASTING POWER OF ATTORNEY SPECIALISTS —

Are you prepared?

Never has there been a more important time to
have your Will and Lasting Powers of Attorney in
place. Get in touch to book your personal
appointment using an easy-to-use video
appointment system.

10% off all Will & Lasting
Power of Attorney services
for Bromham Residents

www.rmdandassociates.com



Opening Times

Monday - Tuesday

Closed

Wednesday - Friday

9am - 3pm / 5:30pm - 10pm

Saturday & Sundays

9am - 10pm

THE WESTBROOK

We are now open Wednesday to Sunday for Breakfast, Lunch and Evening meals. Takeaway is available at all times. Why not start the day with a cooked breakfast or just drop in for a coffee.

Just give us a call on 01380 850418 to book a table.

NEW FOR NOVEMBER

Our brand new heated Marquee/ Garden Room.



Kevin, Louise, Florence and Charles would like to wish all of our customers, friends and their families a very
Happy Christmas.

We will be offering our Christmas Menu from the last week in November, and we look forward to welcoming you all.



Happy Feet Childminding

Can now offer Mon-Fri pick up's
from St Nicholas School, Bromham.

Please contact Di on
07880364069 and have a look
at my reviews on Facebook at
happyfeetchildminding

ANGELL MOTORS

CAR REPAIRS & SERVICING

FIXED PRICE SERVICING

- All Makes & Models
- M.O.T. Service
- Diagnostics
- Brakes & Clutches
- Welding & Repairs
- Air Conditioning Repairs
- Volvo Trained Technician
- Towbars Fitted
- Local Collection/Delivery

TELEPHONE: 01225 707140

Email: angellmotors@sky.com • www.angellmotors.co.uk

Unit 4 Strattons Walk, High Street,
Melksham SN12 6JL (rear of Poundstretcher)



LS architectural design

Thinking of extending, converting or replacing
your existing home?

With over 25 years residential design experience
in the Wiltshire area, we offer professional
architectural services at affordable prices.

Call or email today for a free, no obligation,
consultation:

☎ 07768 808268

✉ lsarchitecturaldesign@outlook.com

For more information on our services and projects
or to read what our past and present clients think
of us, please look us up via our website:

🏠 www.lsarchitecturaldesign.co.uk

STONEHEATH

FITNESS & THERAPY

Sports and Soft Tissue Massage in Bromham, Wiltshire

07870133317

Stoneheathfitness@outlook.com

www.facebook.com/Stoneheathfitnessandtherapy/

www.Instagram.com/stoneheathfitnessandtherapy

GRAY & AMOR LTD.

CARPENTRY & PROPERTY RENOVATION

Covering all aspects of property renovation and maintenance

View our range of services online or call to discuss your project

www.grayandamor.co.uk

CALL (01380) 587006



Change and Wellbeing Therapy

cognitive behavioural therapy - hypnotherapy - relaxation -
mindfulness - stress management

Face to face appointments now available at The Therapy Rooms, 32
New Rd, Chippenham and in Bromham

anxiety - stress - phobias - chronic pain - habits - poor sleep
life goals: career - personal life - sports

Call for a chat or email
t: 07702 113544

e: heather@northwessextherapies.com
w: www.northwessextherapies.com



Pagets Direct Veg Sales

Opening times for collection from us at Stills Farm, 113 Hawkstreet, Bromham, SN15 2HU

Thursdays 3pm till 5pm

Fridays 3pm till 5pm

Cash preferred.

If you have any queries, please call Hannah on **07900 430613**; or contact us via our Facebook page **@pagetsdirect**

We would like to take this opportunity to thank everyone for their continued support.

Hannah Paget and the team at Stills Farm



The Five Elements Retreats

Based in Bromham on New Road
Offers you a way to relax the mind and body, in a natural non-invasive way.

Reiki

Reiki Drumming

Ear Candles

Hand Reflexology

Chakra balancing

Gamma Mindset

Reiki training available for all levels

Bespoke healing experiences and Wellness Days

To ask any questions or to find out more please message me or follow on Facebook and Instagram

Contact Trudi on 07810 – 374053

Trudis36@gmail.com

www.thefiveelementsretreats.co.uk

GADGETITIS

Did you know that I can cure Gadgetitis?

If you have a gadget that irritates the life out of you, or a new bit of kit that you can't get to grips with, I can help.

But that's not the only thing I can help you with.

I'm also your one stop shop for:

- ◆ Buying advice
- ◆ Pc/laptop/tablet/phone repair
- ◆ Data recovery
- ◆ Windows/Mac restore
- ◆ Data transfer from old to new
- ◆ Training on software
- ◆ Confidence building - use your tech in a way that works for you
- ◆ Small business support
- ◆ Gadget advice, including smart TV
- ◆ IT support for the older person (jargon-free help and advice)



Basically, if you are experiencing any form of Gadgetitis, or think you have to go to a pc shop for the solution, think again.



Kathryn@ksptechcare.co.uk

Phone 07427 104249

www.ksptechcare.co.uk



VAUGHAN'S
Cookery School

Inspiring, Creative & Fun!
Taught by professionals

www.vaughanskitchen.co.uk
01380 530203 • school@vaughanskitchen.co.uk

fabrics @ home

Fabrics at home are available for all your curtain and Roman blind needs. I'm following government guidelines on social distancing, face masks etc.

If you have any projects you would like advice on then please contact me by email at

sales@fabricsathome.co.uk

I am also making face coverings @£5 each, and have loads of fabrics to choose from.

"Don't shiver, We deliver"
Seasoned hard wood logs



Call James

01380 850312 or 07970 781828

Most tree work undertaken

LAZY ACRE

HOLIDAY LET AND B&B

DEN & CATH FILLIS

LAZY ACRE

THE COMMON, BROMHAM

CHIPPENHAM

SN15 2JJ

01380 850473

d.t.fillis@hotmail.co.uk



LAZY ACRE

B&B AND HOLIDAY LET

We are now open for bookings, but will not be offering breakfast for the time being. It is a completely self contained unit so no contact at all. Also ideal for workmen looking for accommodation in the area. Can comfortably accommodate 4 people.



Catherine Body

Virtual Assistant | Remote Business Support

Remote Business Support ~ Bookkeeping ~

Inbox/Diary management ~

Administration

catherine@catherinebodyva.co.uk

07564 190330

Based in Bromham

PICTURE

Choose from over 40 mouldings

Mounting and Wash Lining

Quick Service

Telephone Juliet

01380 850314

FRAMING



Service covers all aspects of chimney care from regular maintenance to sweeping, camera inspections and testing.

SOOTY & SWEEP

Service Open Fires, Wood Burners, Multi Fuel Stoves and AGAs. Can deal with specific problems such as birds nest removal and cowl fitting.

Competitive rates and a friendly professional service.

Call Will on: 07789 007418

Or email: **william-newell@hotmail.com**

Amanda Phillips Local Mobile Hairdresser

Cut & blow dry - £25

Gent's cut - £15

Colours from £35 inc. cut

Hi lights from £35

Perms - all inclusive £48



Phone for quote 07889 744727

amandapagethairdesign@hotmail.com

BEN PEARCE HANDYMAN SERVICES

I'm on Instagram and Facebook

@benpearcehandymanservices

Phone : 07515 052246

See my Facebook page for examples of completed jobs and reviews from happy customers.

ILES & VINCENT

FUNERAL SERVICES

BROMHAM'S RESIDENT INDEPENDENT FUNERAL DIRECTOR



24 hour professional & caring service

The Cornmarket, Warminster, BA12 9BX
01985 220161 (24 hours)
info@ilesandvincentfuneralservices.co.uk

Made to Measure Curtains, Blinds and Soft Furnishings

Free measuring and quotations
Hundreds of patterns to choose

Call Caroline Flack on
07982 985 925



FOREVER



GIVE THE GIFT OF
GOOD HEALTH
THIS CHRISTMAS
ECO-FRIENDLY
ALOE VERA
PRODUCTS

Drink it, apply it,
rub it in – aloe for
all!

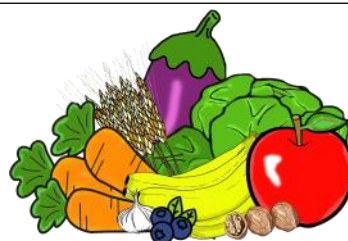
Gift Vouchers also available

From your local friendly Forever Business Owner

Caroline Palmer - 07753 677432 - caro@aloe-aloe.org.uk

Join my private Facebook group – Aloe For All

FREE delivery for local customers



Bromham Fruit & Veg Supplies

Quality, affordable, locally sourced fresh
seasonal veggies. Also juicy & fresh fruits & eggs!

Visit our stall every Saturday in The Greyhound
Car Park from 9.30am-10.30am.

Christmas Trees for sale from 1st December!
Norwegian Premium non-drop 5ft & 6ft available
on our Christmas stall every weekend in

December - Fridays 5pm-9pm and Saturdays
2pm-6pm @ the Owl/Social Centre Car Park

Deliveries on all items, including trees, available
throughout the week. Call us on **07926 946801**
or find us on Facebook - Bromham Fruit & Veg
Supplies



Bromham Post Office
Bromham Social Centre
New Road, Bromham

Opening Hours:

Monday: 1.30 - 3.30pm
Wednesday: 9.00 - 11.00am

Fancy a holiday in sunny Swanage?

We have a lovely 2-bedroom apartment, less than 5 minutes from the sea, available for rental at "Mates Rates" for Bromham folk!

For details, call Lynne or Dave Smith
01380 850783

**BOB DURRANT
HOME MAINTENANCE SERVICES**

No Job Too Small - Just Ask

Painting, Decorating, Tiling
Kitchen, Bedroom & Bathroom Fitting

Telephone: 01249 730679
Mobile: 07732 855834
Email: durrants007@gmail.com

AB Painting & Decorating Services

- Internal and External
- Qualified and Insured
- Free Quotations
- Professional finish and dust free sanding

Adrian Bolwell

Tel: 01380 850080

Mobile: 07962 590710

3 Church Hill, Bromham



BROMHAM MOTOR WORKS

Car & light commercial repairs
Diagnostics • Mechanical • Welding • Servicing

01380 859731

Unit 2, Barley Close Farm, New Rd.
Bromham, Wiltshire, SN15 2JA



**Homoeopathy,
Yoga & Nutrition**

Using a combination of homoeopathy, yoga and nutritional guidance Women's Wellness Wiltshire offers an holistic approach to restoring and maintaining optimum health, passionately believing in the power of the body to heal physically, mentally and emotionally.

Experienced homoeopath and yoga teacher, Cathy Welch, works with each person on an individual level, building a trusting therapeutic relationship and creating a tailor-made treatment programme.

Appointments face to face in Bradford on Avon and online via Zoom.

Tel: 07762 315070 Email: cathywelchhom@gmail.com
www.womenswellnesswiltshire.com



ACTIVE PLUMBING SUPPLIES



-  Plumbing & Heating Supplies
-  Boilers
-  Radiators
-  Solar Panels & other Green Technologies
-  Water Softeners & Salt



1 Stanier Road | Porte Marsh | Calne | SN11 9PX
www.plumbingsuppliescalne.co.uk

01249 818811

Open: Mon - Friday 7.30am - 5pm & Sat 8am - 12pm

ACTIVE KITCHENS | BATHROOMS DOMESTIC APPLIANCES

-  Bathrooms, Wet Rooms & Shower Rooms
-  Bespoke Kitchens
-  Granite, Silestone & Laminate Worktops
-  Washing Machines and Dishwashers
-  Kitchen Appliances, Integrated or Freestanding



01249 813871

Open: Mon - Friday 8am - 5pm & Sat 8am - 2pm

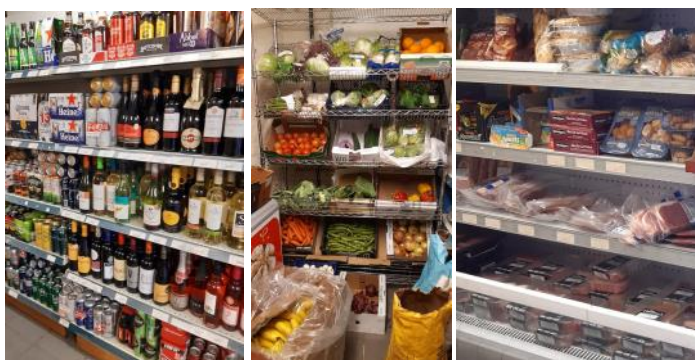
Bromham Village Stores

3 The Chantry, Bromham, SN15 2ET

OPENING TIMES:

Monday to Saturday 8:00 am – 6:00 pm

Sunday 8:00 am – 4:00 pm



FREE LOCAL DELIVERIES - Monday to Saturday

Contact us to arrange a time/day for delivery:

email: dunnadi@btinternet.com

phone: 01380 859093

Follow us on Facebook @BromhamStores for
updates on opening hours and deliveries



BEWLEY
FUNERAL DIRECTORS

Our family are here for your family

Our family have been serving Devizes and the surrounding areas since 1970.

We have local offices and chapels of rest and can help you and your family organise your loved one's final farewell



- 24hr Personal Service • Home Visits
- Pre-paid Funeral Plans

64, New Park St. Devizes

01380 728008

15, Bank St. Melksham

01225 702521

contact@djbewley.com



www.bewleyfunerals.com